

INTEGRA

LIGHTWEIGHT CONCRETE SYSTEMS

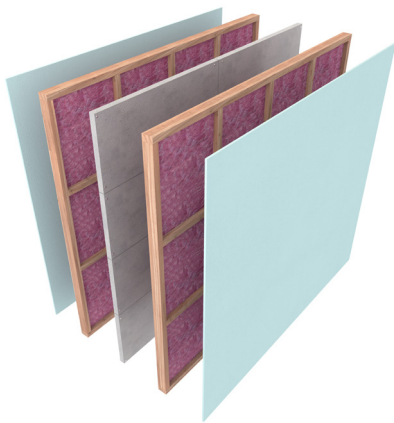
INTEGRA Lightweight Concrete Intertency System

Comfort & Safety are paramount features for owners when they are looking at working with Architects & Engineers on a project.

Our central barrier intertenancy wall system is designed for use in medium & high density housing developments which has passed rigorous independent acoustic & fire testing to exceed the requirements of the building code.

The INTEGRA Lightweight Concrete Intertency System is a proprietary high-performance wall system that provides you tested systems for resistance to horizontal fire and acoustic separation between adjacent tenancies in the same building.

Enjoy the benefits of our tested, trusted barrier intertenancy walling system for your next project.



Innovative
design
+
Enduring
performance
+
Integrated
systems



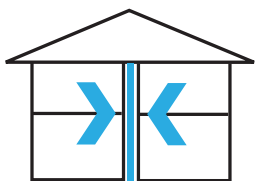
INTEGRA

LIGHTWEIGHT CONCRETE SYSTEMS

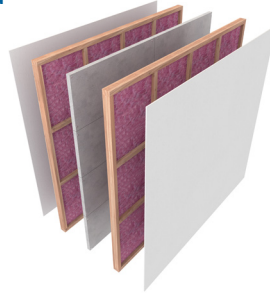
SYSTEM FEATURES:

- + All weather construction.
- + Fast installation
- + Low waste
- + 290mm – 336mm max Overall wall widths
- + Proprietary acoustic dampening bracket
- + Cost effective – Limited components.
- + Non-specialist trade installation.
- + All systems FRR 120/120/120•
- + STC & Rw 67 with one system

Innovative design
Integrated systems
Enduring performance

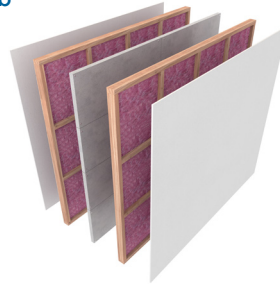


INTA12a



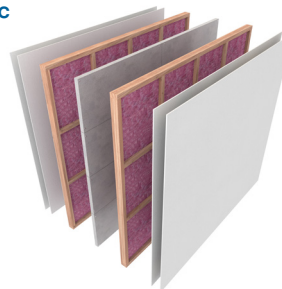
STC Rating - 64
Rw Rating - 62
FRR - 120/120/120
Cavity width - 20-40mm cavity
Wall Width - 290-330mm

INTA12b



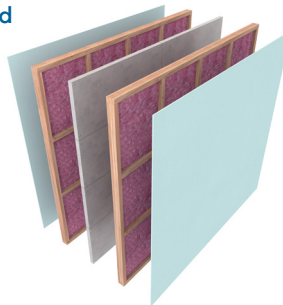
STC Rating - 66
Rw Rating - 65
FRR - 120/120/120
Cavity width - 20-40mm cavity
Wall Width - 296-336mm

INTA12c



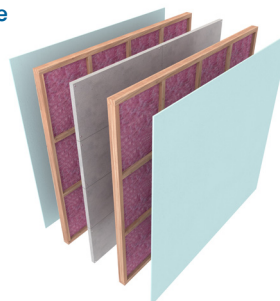
STC Rating - 67
Rw Rating - 66
FRR - 120/120/120
Cavity width - 20-40mm cavity
Wall Width - 310-350mm

INTA12d



STC Rating - 66
Rw Rating - 65
FRR - 120/120/120
Cavity width - 20-40mm cavity
Wall Width - 290-330mm

INTA12e



STC Rating - 67
Rw Rating - 67
FRR - 120/120/120
Cavity width - 20-40mm cavity
Wall Width - 296-336mm