

| Sheet List Table |  |
|------------------|--|
| Sheet Number     | Sheet Title                            |
| 31.15.00         | Drawing Register                       |
| 31.15.01         | Floor Layout                           |
| 31.15.02         | Steel Floor Joist                      |
| 31.15.03         | Section Through Panel (Lengthwise)     |
| 31.15.04         | Section Through Panel (widthwise)      |
| 31.15.05         | Timber Floor Joist Change of Driection |
| 31.15.06         | Non-Load Bearing Wall                  |
| 31.15.07         | Load Bearing Wall                      |
| 31.15.08         | Brace Wall Fixing                      |
| 31.15.09         | Brace Wall Perimiter Fixing            |
| 31.15.10         | Penetration (smaller than 80mm)        |
| 31.15.11         | Penetration (Larger than 80mm)         |
| 31.15.12         | Control Joint                          |
| 31.15.13         | WANZ Bar - Option 1                    |
| 31.15.14         | WANZ Bar - Option 2                    |
| 31.15.15         | Flooring Stepdown                      |

TradeSpec™ and RenderSpec™ are Registered Trademarks, both Documents are available on the Resene Construction Systems



CONFIDENTIALITY: No part of this publication may be reproduced or transmitted other than the intended use by Resene Construction Systems without written consent from the author.

System  
Integra Flooring System

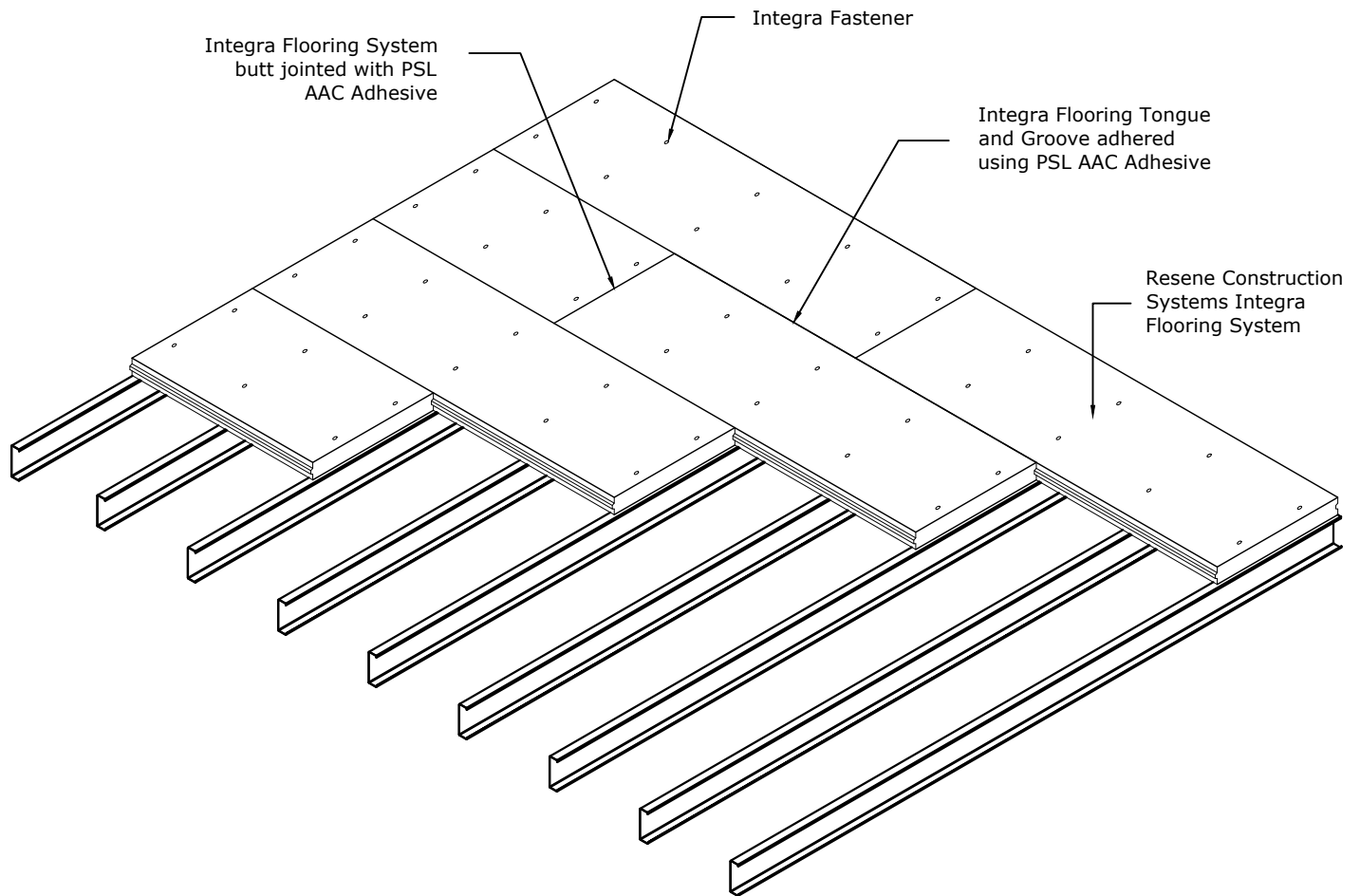
Substrate  
75mm Integra Panel on Steel Joists

Drawing Name  
Drawing Register

Scale  
1 : 2 @ A4

Date  
1 November 2017

Sheet  
31.15.00



TradeSpec™ and RenderSpec™ are Registered Trademarks, both Documents are available on the Resene Construction Systems

**Resene**   
**Construction Systems**

CONFIDENTIALITY: No part of this publication may be reproduced or transmitted other than the intended use by Resene Construction Systems without written consent from the author.

System  
 Integra Flooring System

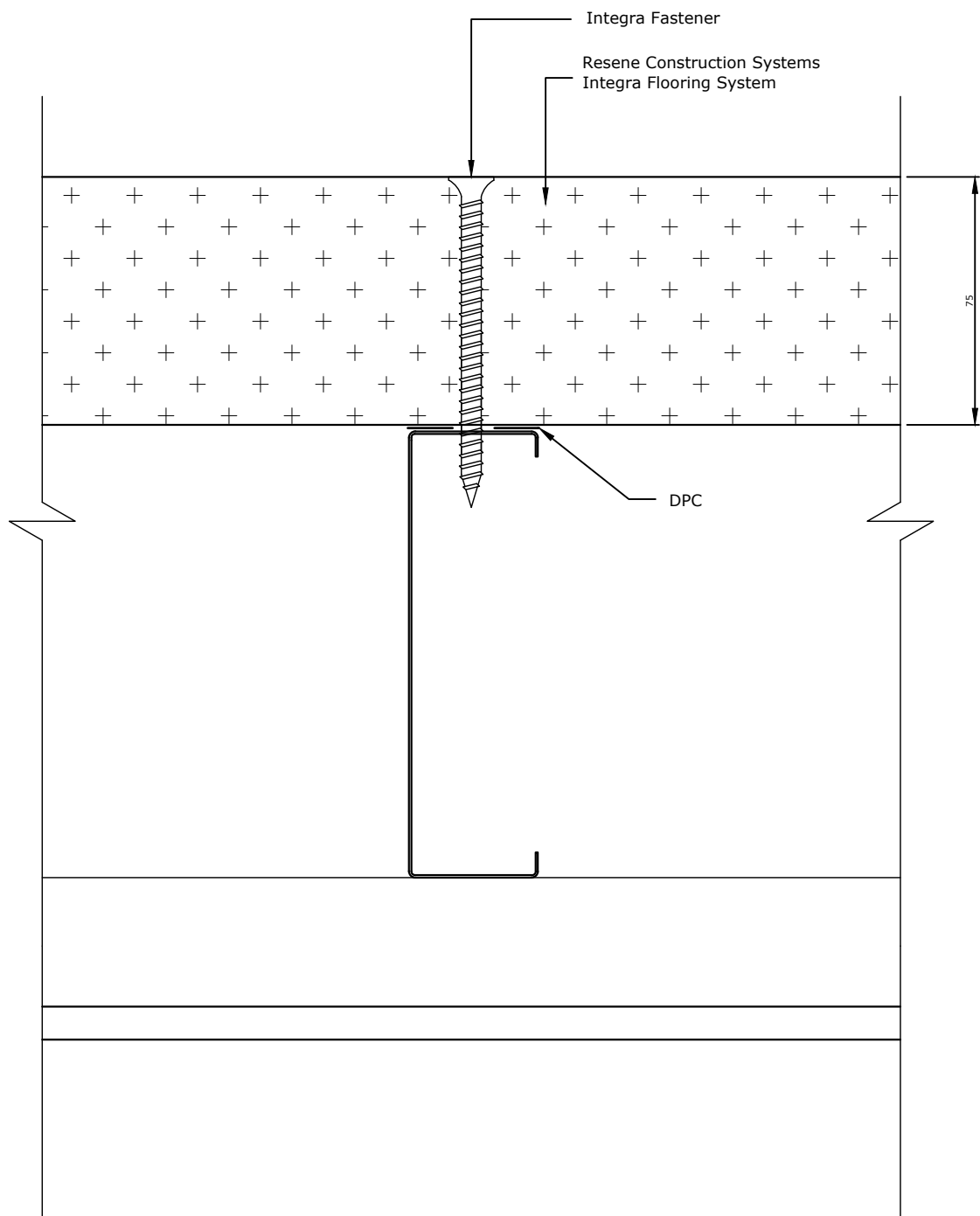
Substrate  
 75mm Integra Panel on Steel Joists

Drawing Name  
 Floor Layout

Scale  
 Not to scale

Date  
 1 November 2017

Sheet  
 31.15.01



TradeSpec™ and RenderSpec™ are Registered Trademarks, both Documents are available on the Resene Construction Systems

**Resene**   
**Construction Systems**

CONFIDENTIALITY: No part of this publication may be reproduced or transmitted other than the intended use by Resene Construction Systems without written consent from the author.

System  
 Integra Flooring System

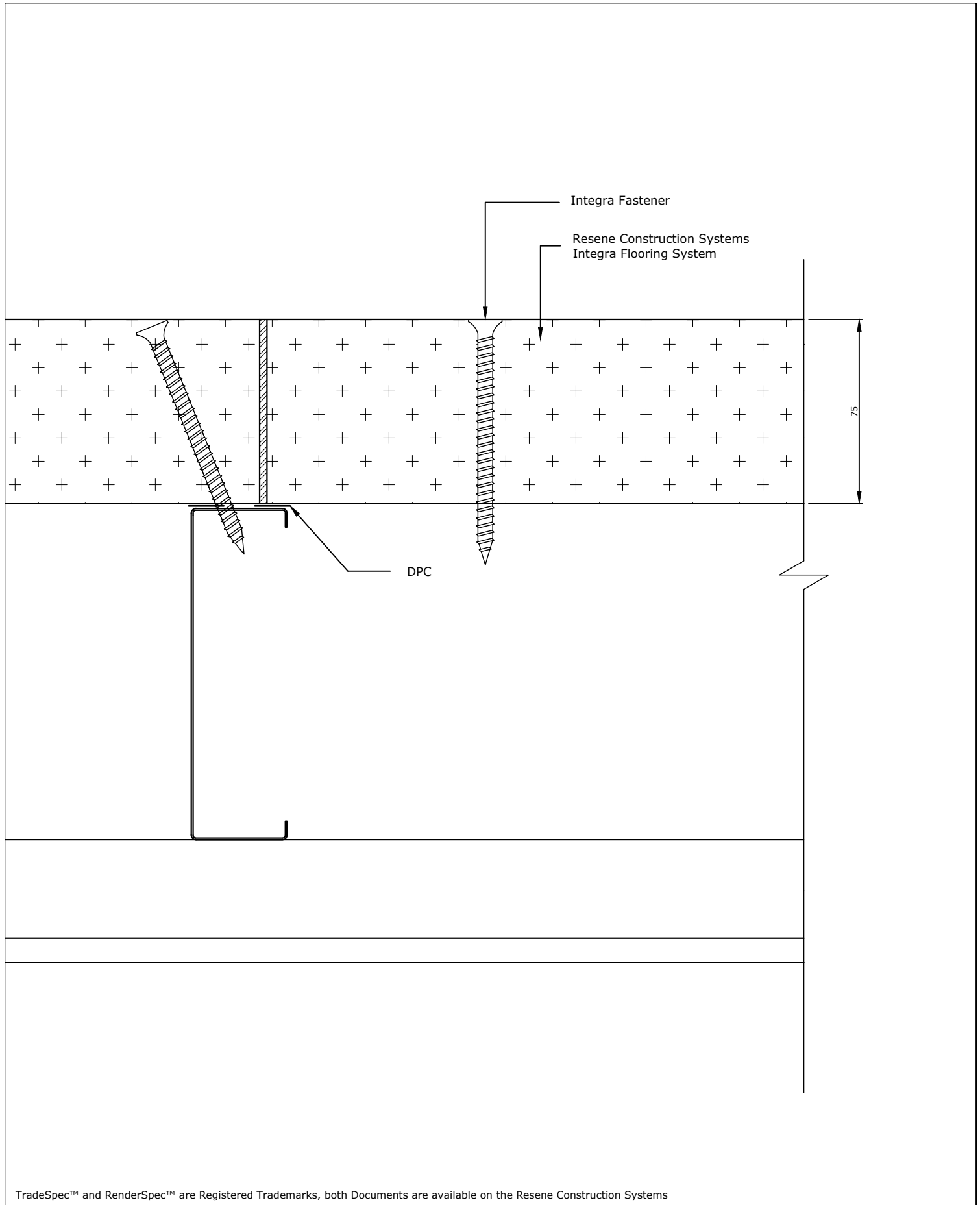
Substrate  
 75mm Integra Panel on Steel Joists

Drawing Name  
 Steel Floor Joist

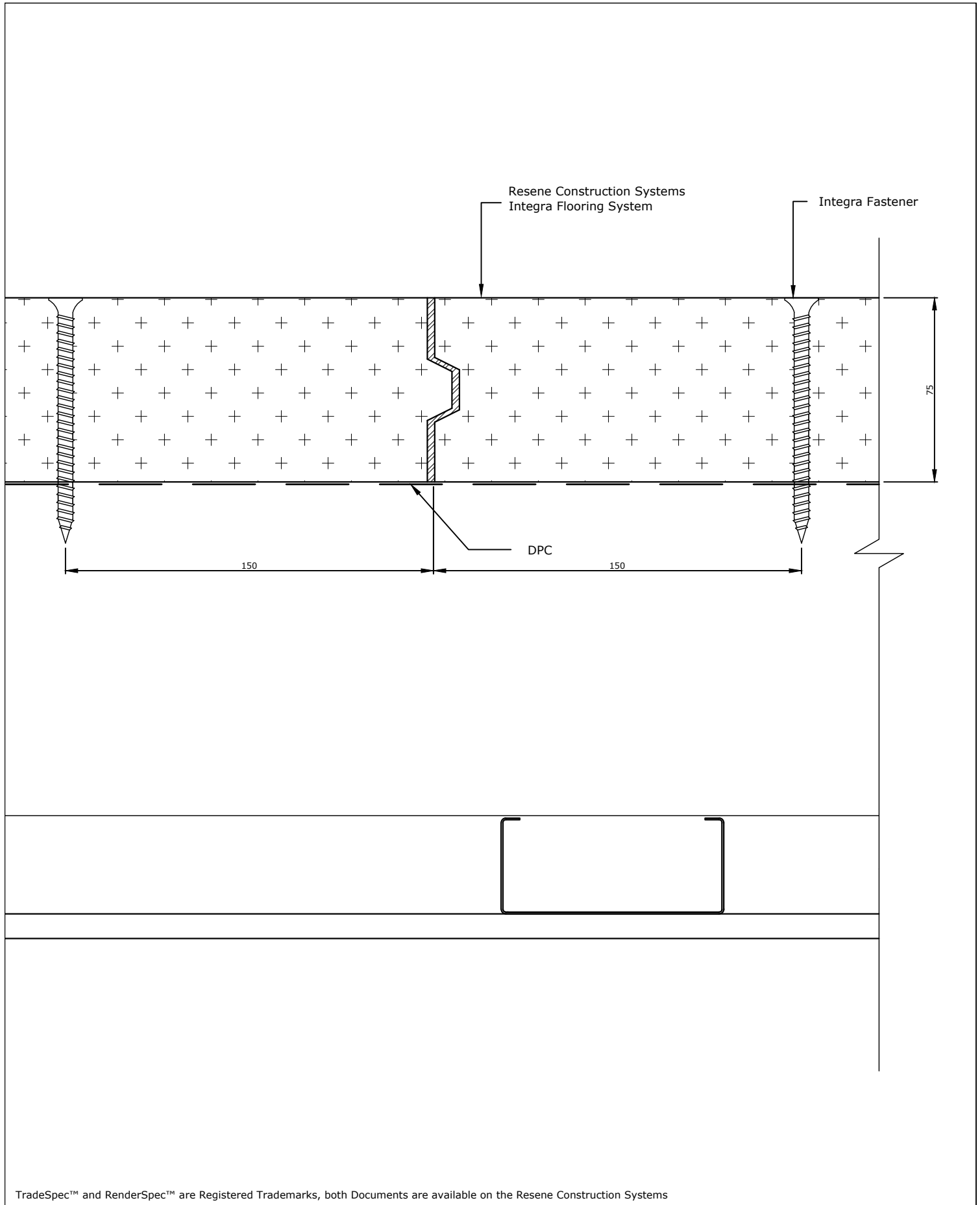
Scale  
 1 : 2 @ A4

Date  
 1 November 2017

Sheet  
 31.15.02



TradeSpec™ and RenderSpec™ are Registered Trademarks, both Documents are available on the Resene Construction Systems



TradeSpec™ and RenderSpec™ are Registered Trademarks, both Documents are available on the Resene Construction Systems



CONFIDENTIALITY: No part of this publication may be reproduced or transmitted other than the intended use by Resene Construction Systems without written consent from the author.

System  
Integra Flooring System

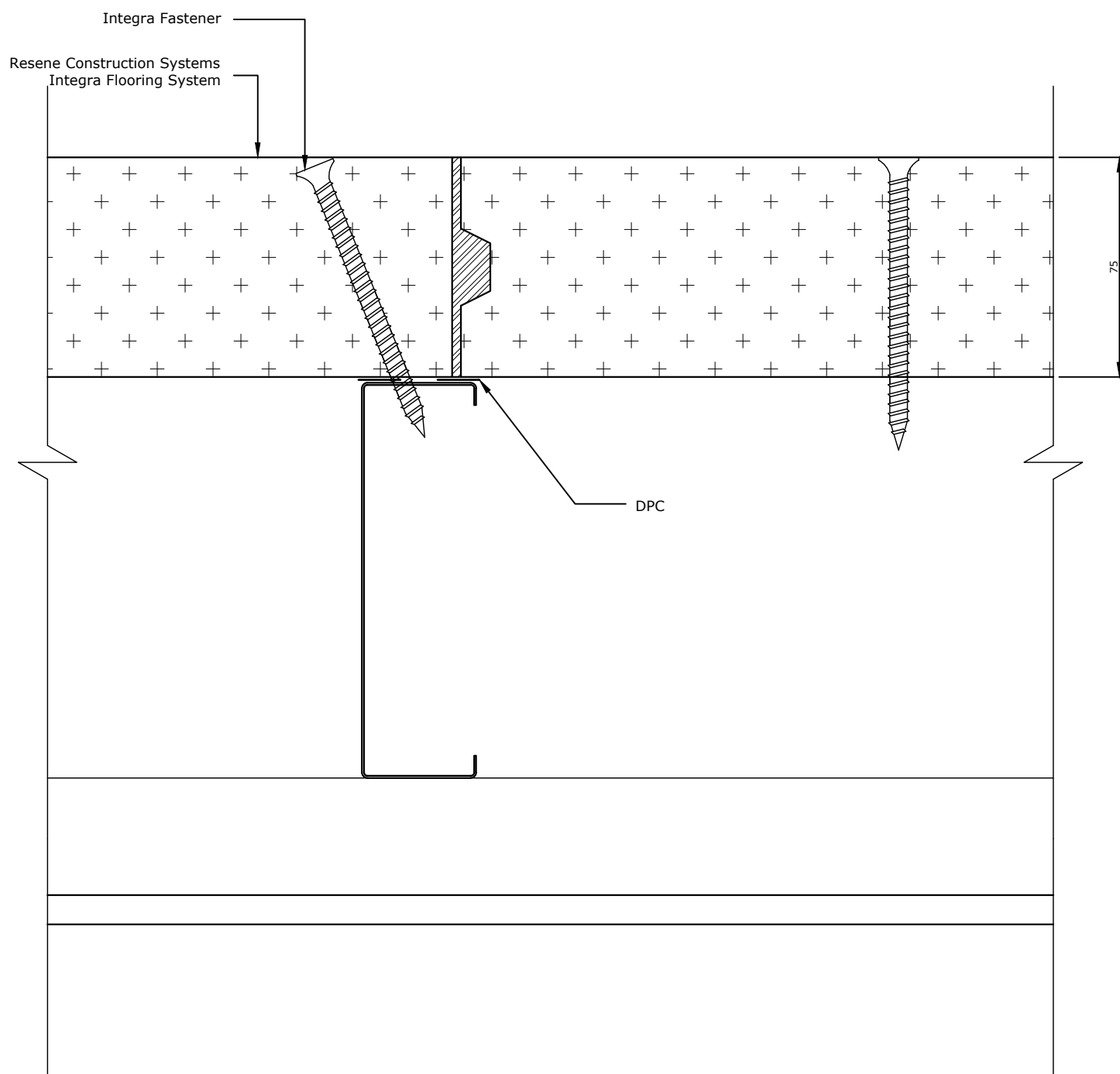
Substrate  
75mm Integra Panel on Steel Joists

Drawing Name  
Section Through Panel (widthwise)

Scale  
1 : 2 @ A4

Date  
1 November 2017

Sheet  
31.15.04



TradeSpec™ and RenderSpec™ are Registered Trademarks, both Documents are available on the Resene Construction Systems

**Resene**   
**Construction Systems**

CONFIDENTIALITY: No part of this publication may be reproduced or transmitted other than the intended use by Resene Construction Systems without written consent from the author.

System  
 Integra Flooring System

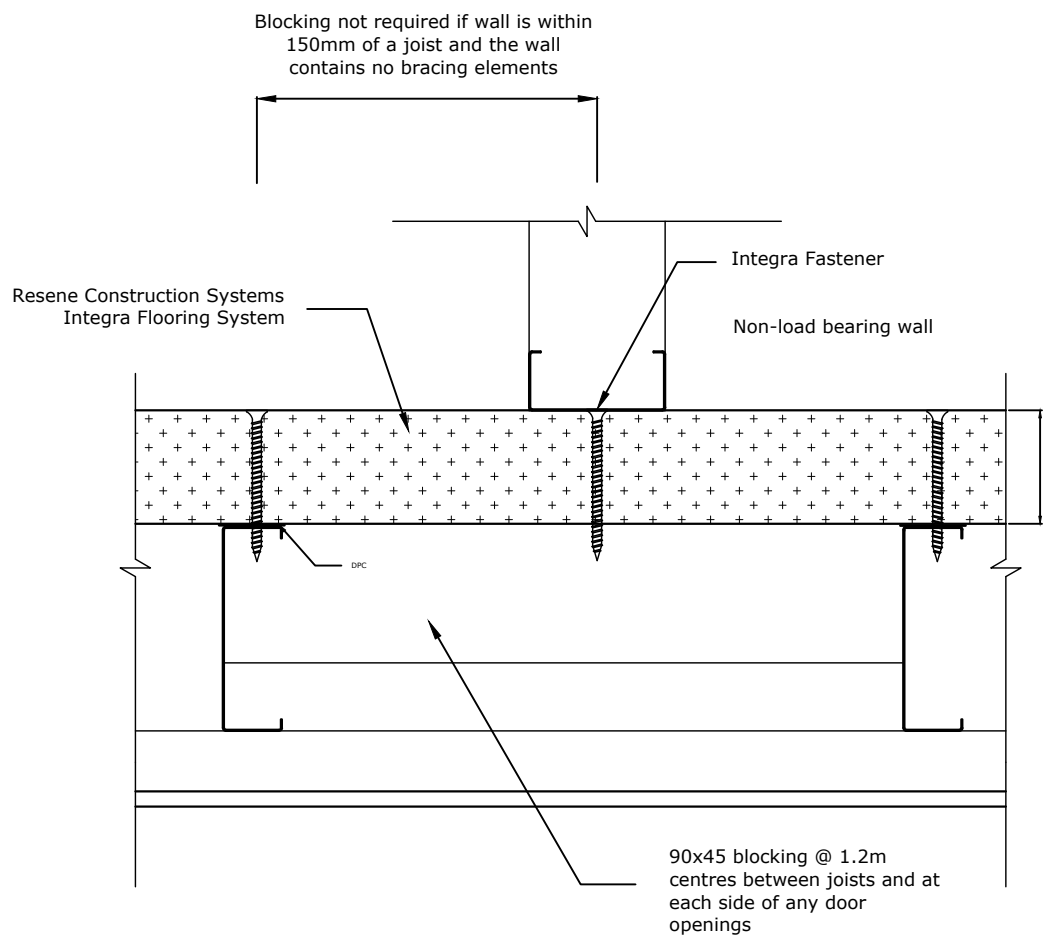
Substrate  
 75mm Integra Panel on Steel Joists

Drawing Name  
 Timber Floor Joist Change of Direction

Scale  
 1 : 2 @ A4

Date  
 1 November 2017

Sheet  
 31.15.05



TradeSpec™ and RenderSpec™ are Registered Trademarks, both Documents are available on the Resene Construction Systems

**Resene**   
**Construction Systems**

CONFIDENTIALITY: No part of this publication may be reproduced or transmitted other than the intended use by Resene Construction Systems without written consent from the author.

System  
Integra Flooring System

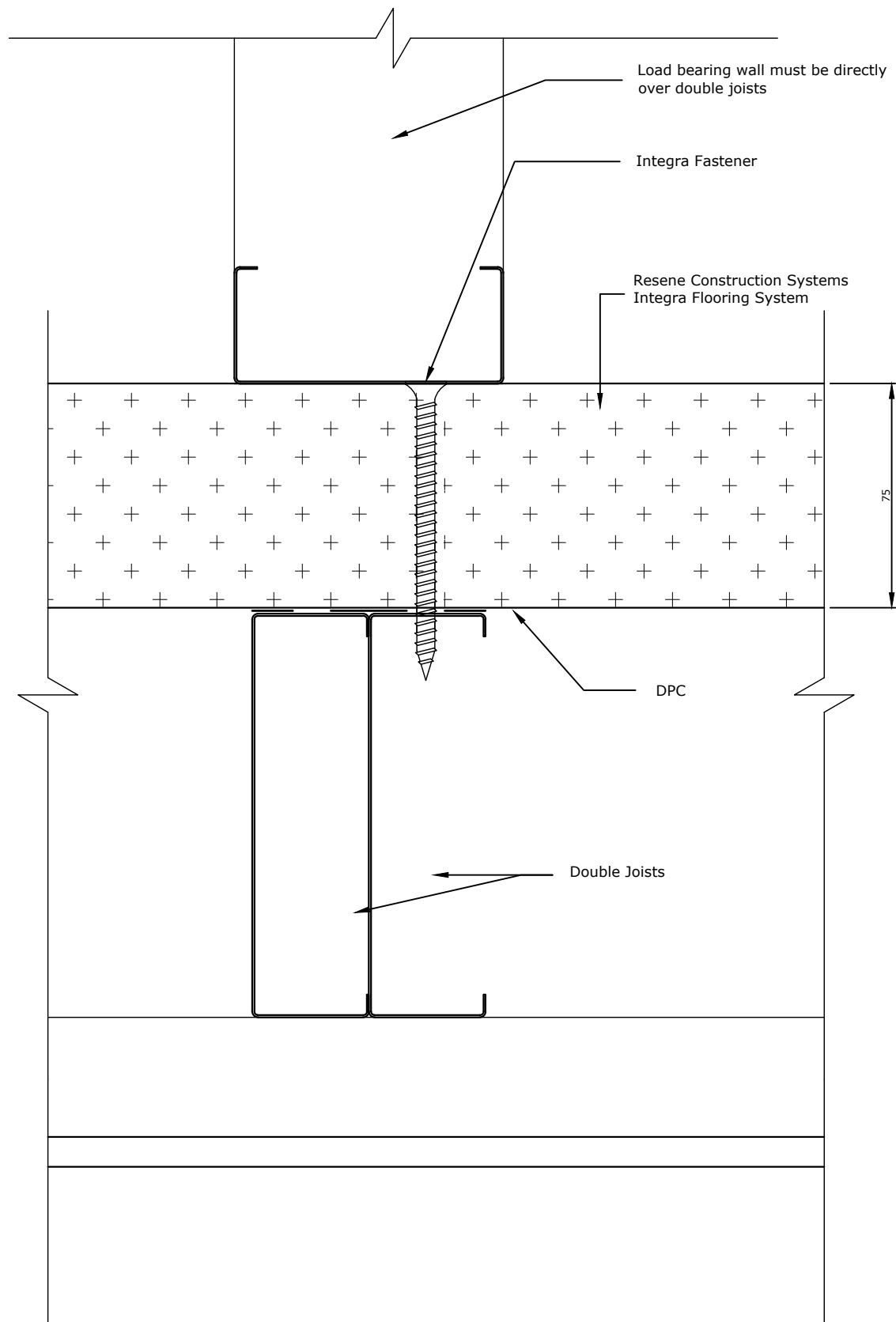
Substrate  
75mm Integra Panel on Steel Joists

Drawing Name  
Non-Load Bearing Wall

Scale  
1 : 5 @ A4

Date  
1 November 2017

Sheet  
31.15.06



TradeSpec™ and RenderSpec™ are Registered Trademarks, both Documents are available on the Resene Construction Systems

**Resene**   
**Construction Systems**

CONFIDENTIALITY: No part of this publication may be reproduced or transmitted other than the intended use by Resene Construction Systems without written consent from the author.

System  
Integra Flooring System

Substrate  
75mm Integra Panel on Steel Joists

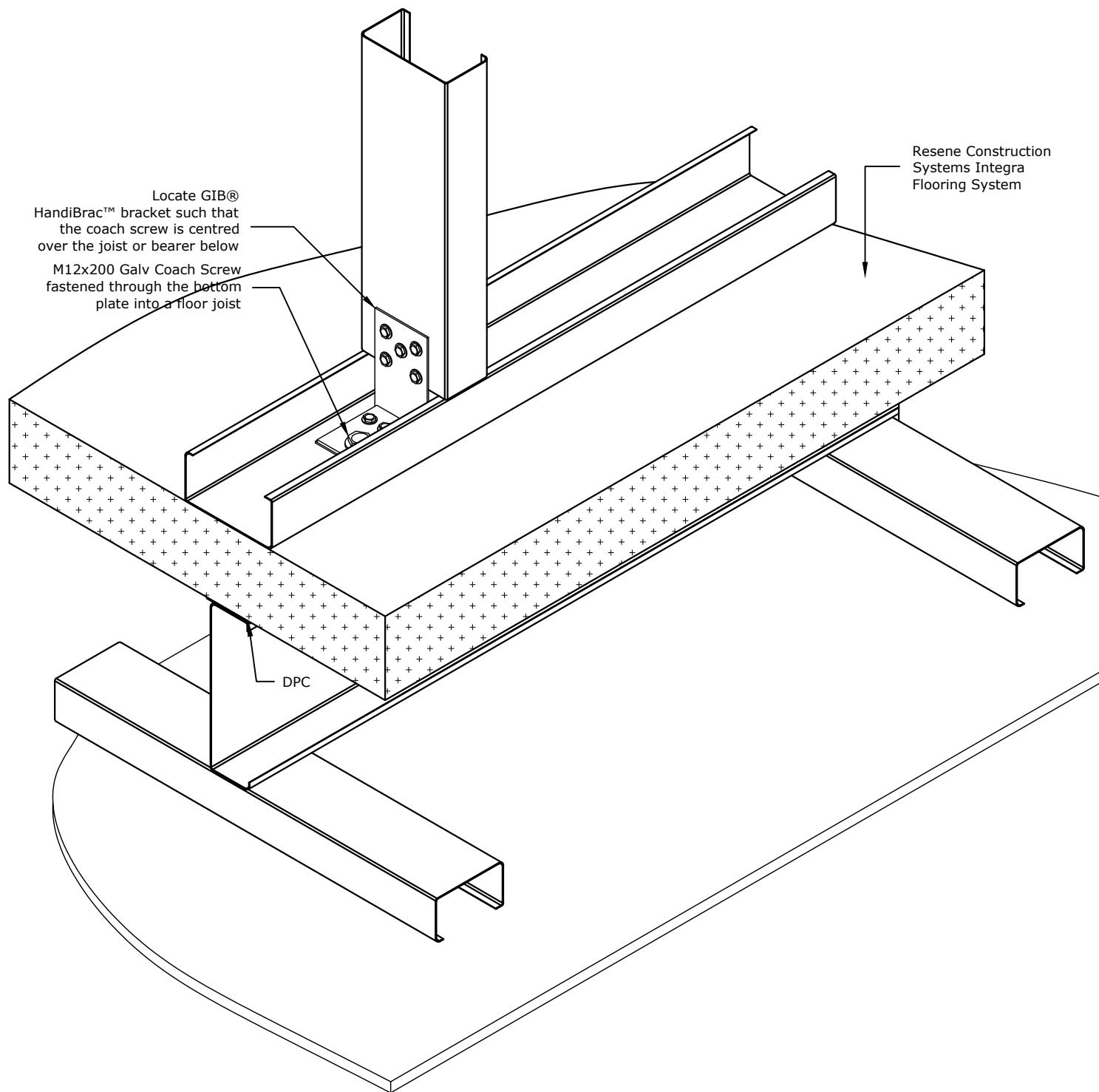
Drawing Name  
Load Bearing Wall

Scale  
1 : 2 @ A4

Date  
1 November 2017

Sheet  
31.15.07





TradeSpec™ and RenderSpec™ are Registered Trademarks, both Documents are available on the Resene Construction Systems

**Resene**   
**Construction Systems**

CONFIDENTIALITY: No part of this publication may be reproduced or transmitted other than the intended use by Resene Construction Systems without written consent from the author.

System  
 Integra Flooring System

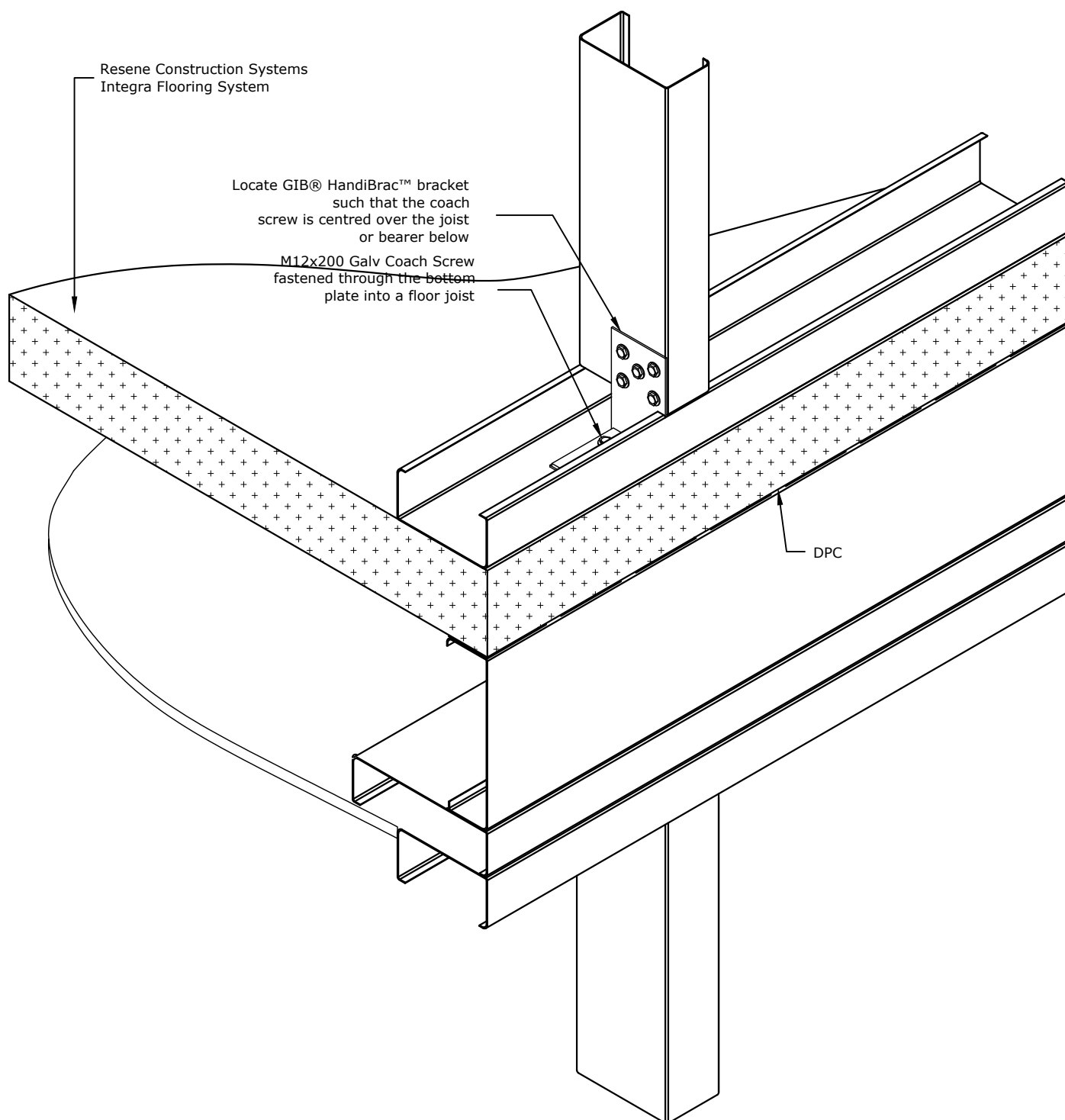
Substrate  
 75mm Integra Panel on Steel Joists

Drawing Name  
 Brace Wall Fixing

Scale  
 1 : 5 @ A4

Date  
 1 November 2017

Sheet  
 31.15.08



TradeSpec™ and RenderSpec™ are Registered Trademarks, both Documents are available on the Resene Construction Systems

**Resene**   
**Construction Systems**

CONFIDENTIALITY: No part of this publication may be reproduced or transmitted other than the intended use by Resene Construction Systems without written consent from the author.

System  
Integra Flooring System

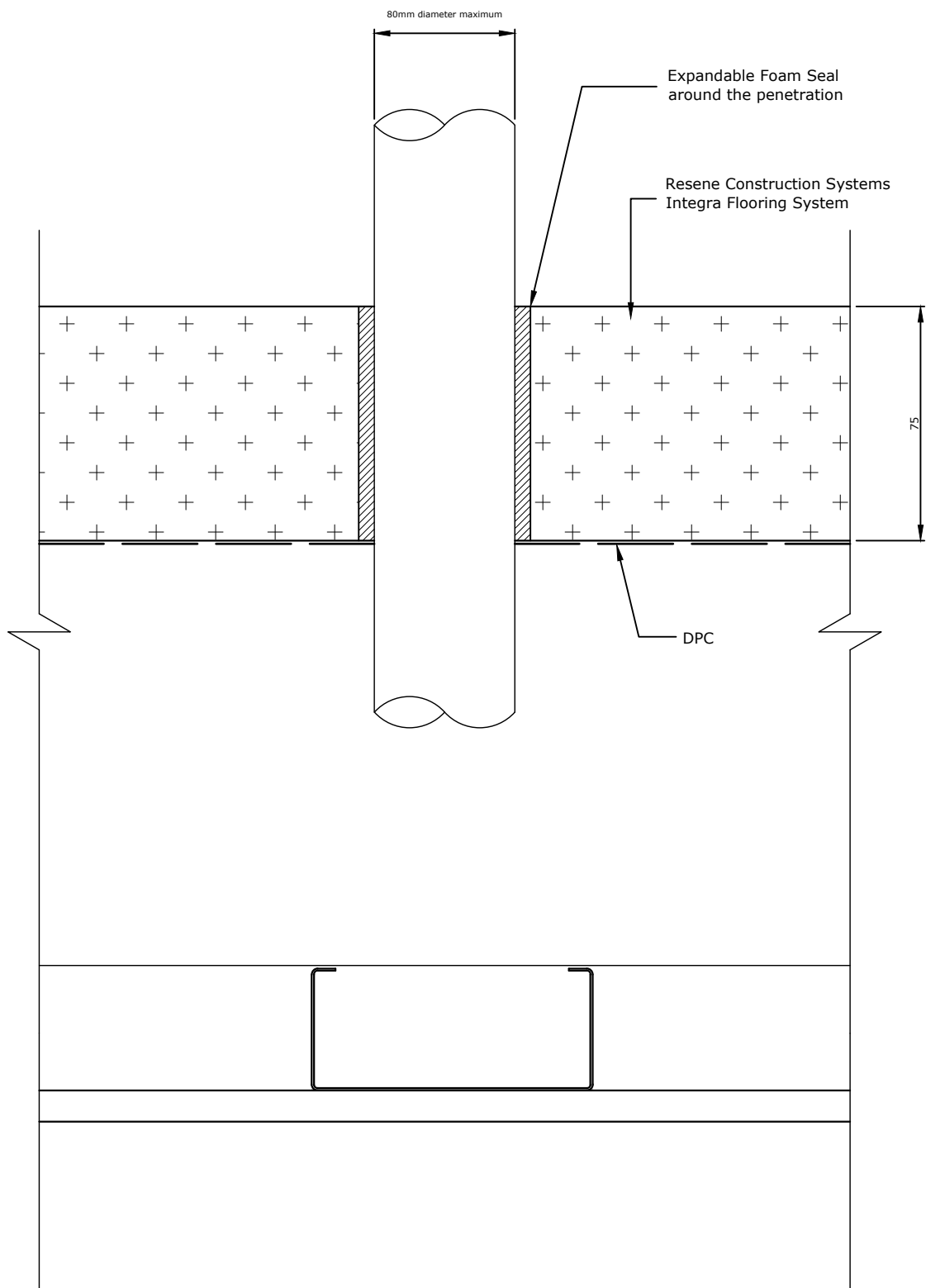
Substrate  
75mm Integra Panel on Steel Joists

Drawing Name  
Brace Wall Perimeter Fixing

Scale  
1 : 2 @ A4

Date  
1 November 2017

Sheet  
31.15.09



TradeSpec™ and RenderSpec™ are Registered Trademarks, both Documents are available on the Resene Construction Systems

**Resene**   
**Construction Systems**

CONFIDENTIALITY: No part of this publication may be reproduced or transmitted other than the intended use by Resene Construction Systems without written consent from the author.

System  
 Integra Flooring System

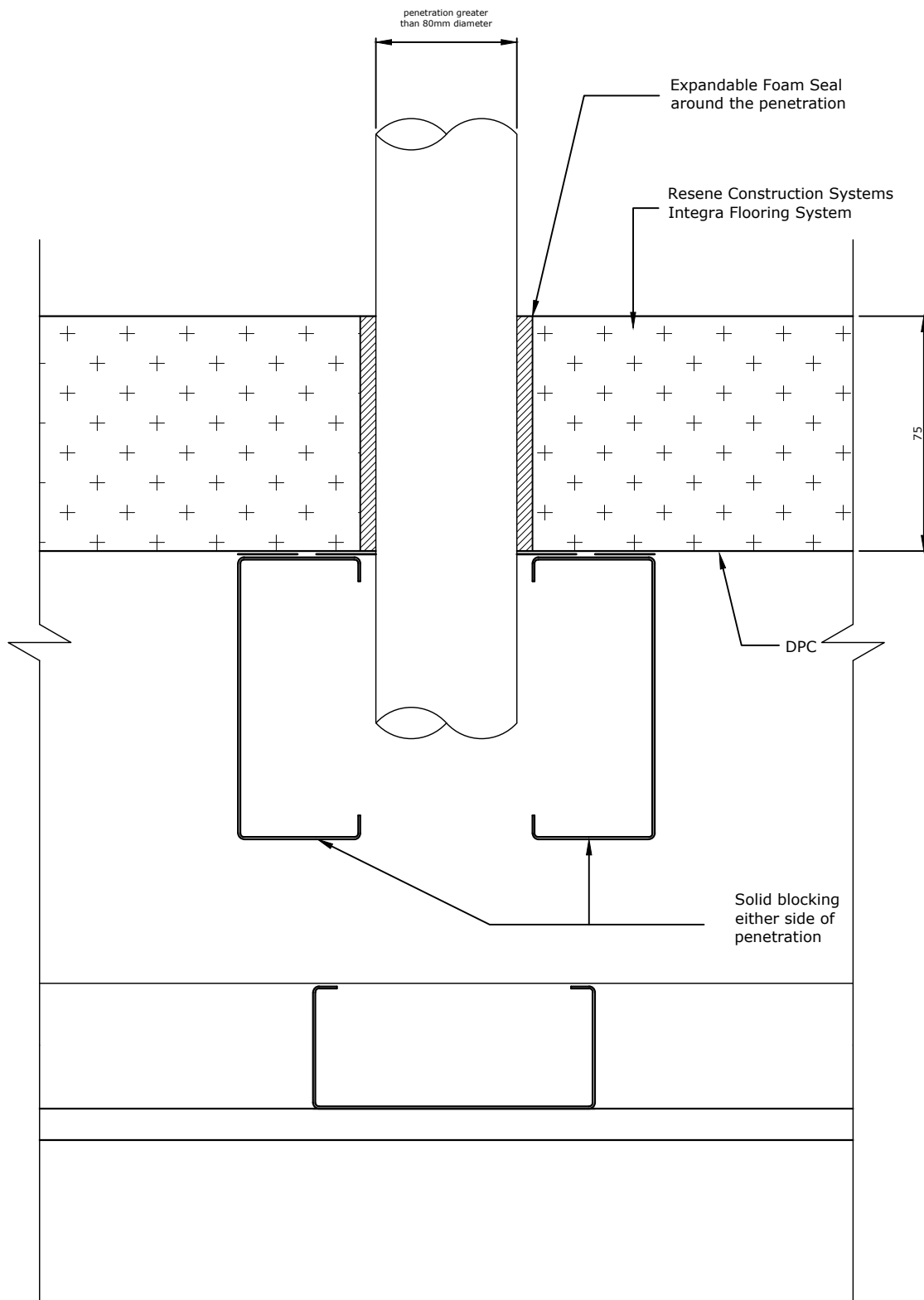
Substrate  
 75mm Integra Panel on Steel Joists

Drawing Name  
 Penetration (smaller than 80mm)

Scale  
 1 : 2 @ A4

Date  
 1 November 2017

Sheet  
 31.15.10



TradeSpec™ and RenderSpec™ are Registered Trademarks, both Documents are available on the Resene Construction Systems

**Resene**   
**Construction Systems**

CONFIDENTIALITY: No part of this publication may be reproduced or transmitted other than the intended use by Resene Construction Systems without written consent from the author.

System  
 Integra Flooring System

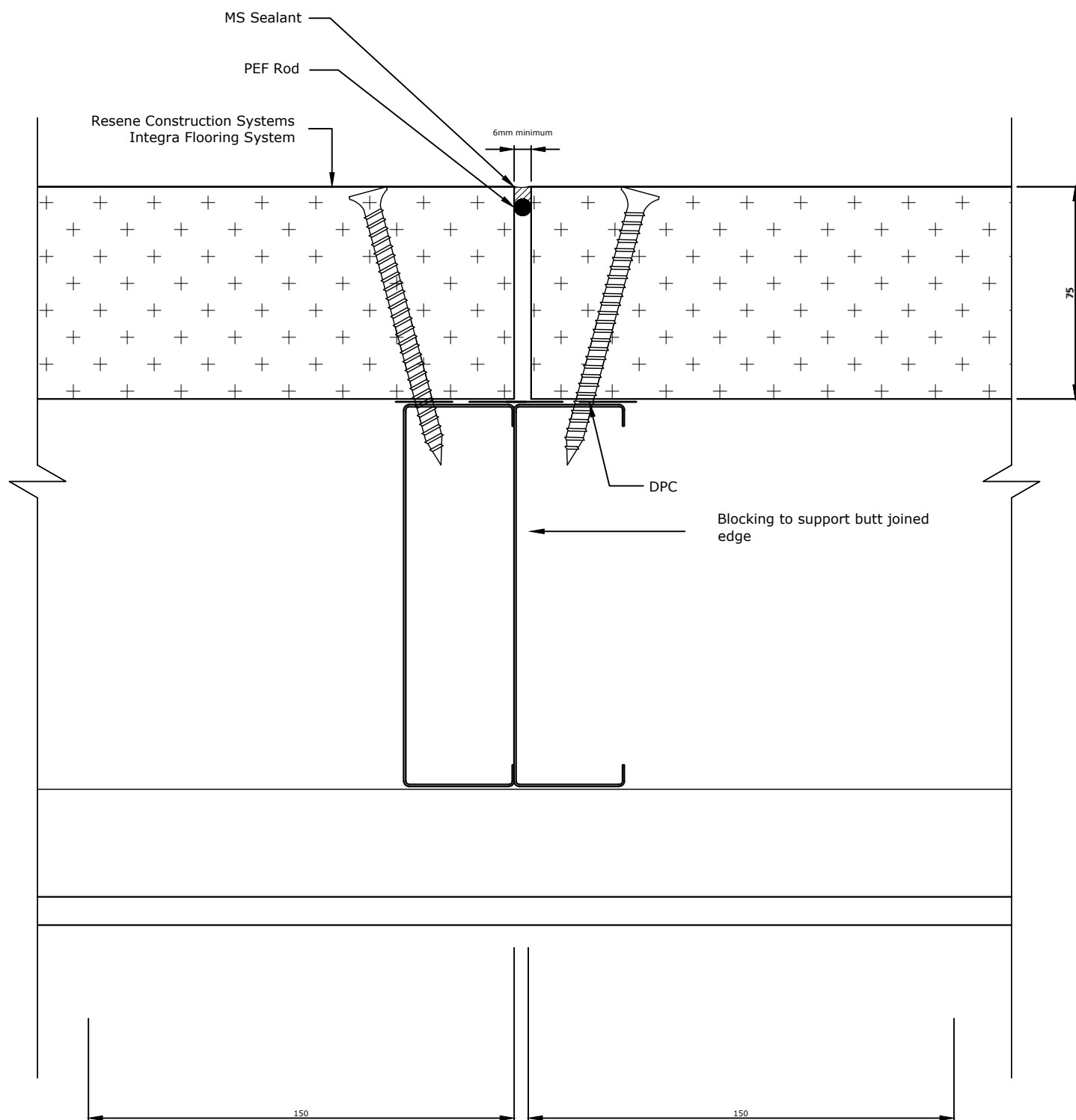
Substrate  
 75mm Integra Panel on Steel Joists

Drawing Name  
 Penetration (Larger than 80mm)

Scale  
 1 : 2 @ A4

Date  
 1 November 2017

Sheet  
 31.15.11



TradeSpec™ and RenderSpec™ are Registered Trademarks, both Documents are available on the Resene Construction Systems

**Resene**   
**Construction Systems**

CONFIDENTIALITY: No part of this publication may be reproduced or transmitted other than the intended use by Resene Construction Systems without written consent from the author.

System  
Integra Flooring System

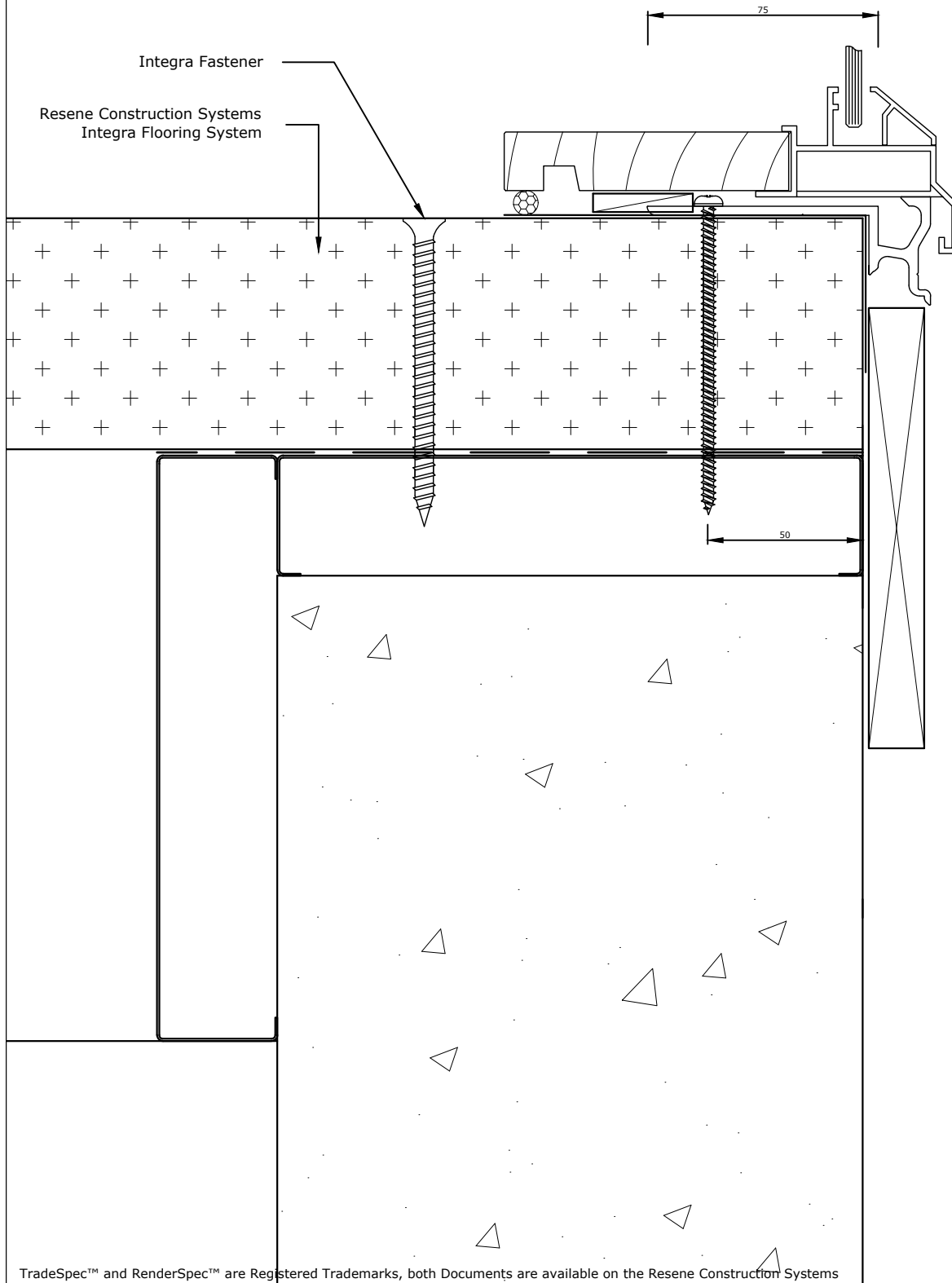
Substrate  
75mm Integra Panel on Steel Joists

Drawing Name  
Control Joint

Scale  
1 : 2 @ A4

Date  
1 November 2017

Sheet  
31.15.12



TradeSpec™ and RenderSpec™ are Registered Trademarks, both Documents are available on the Resene Construction Systems

**Resene**   
**Construction Systems**

CONFIDENTIALITY: No part of this publication may be reproduced or transmitted other than the intended use by Resene Construction Systems without written consent from the author.

System  
 Integra Flooring System

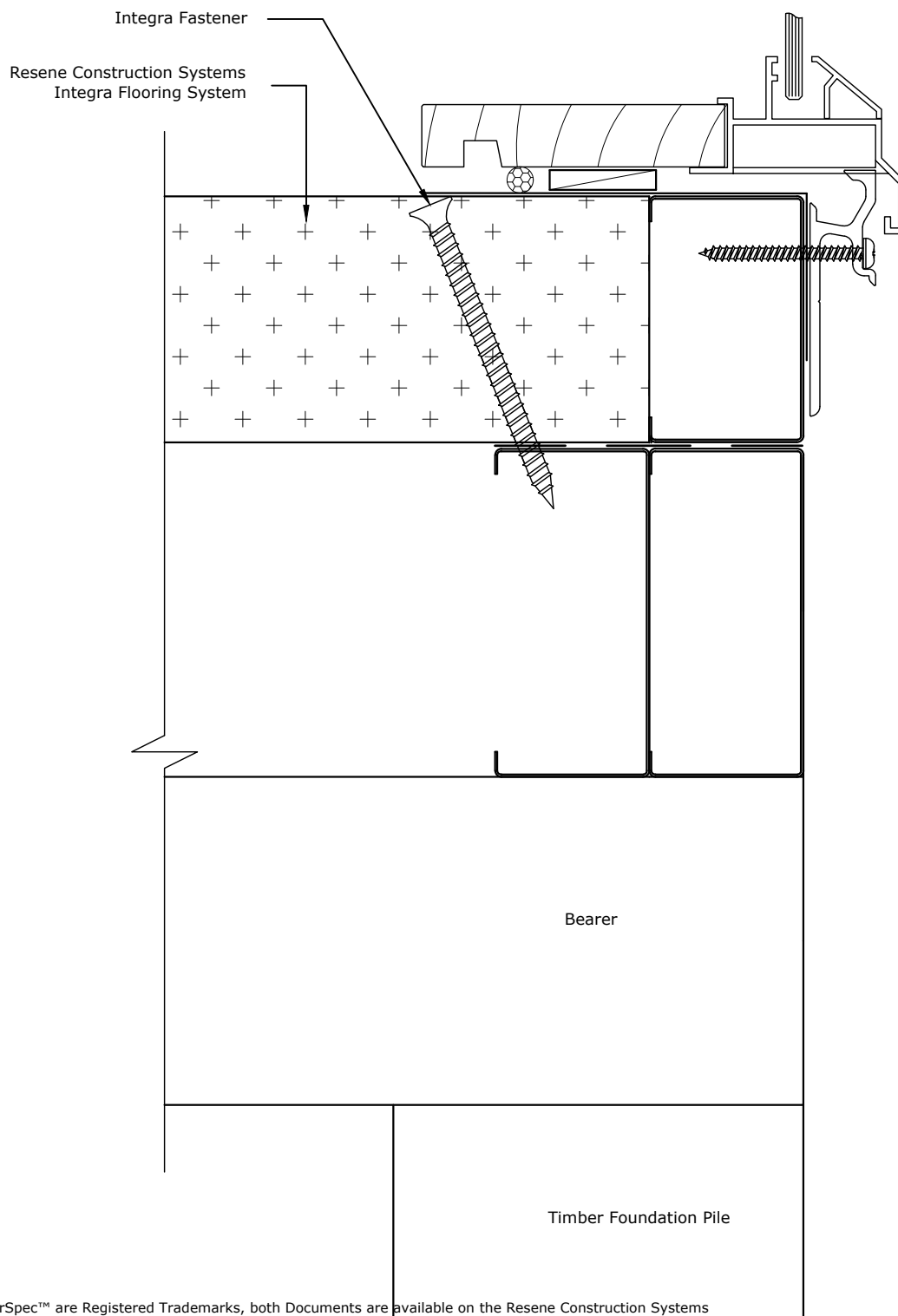
Substrate  
 75mm Integra Panel on Steel Joists

Drawing Name  
 WANZ Bar - Option 1

Scale  
 1 : 2 @ A4

Date  
 1 November 2017

Sheet  
 31.15.13



TradeSpec™ and RenderSpec™ are Registered Trademarks, both Documents are available on the Resene Construction Systems

**Resene**   
**Construction Systems**

CONFIDENTIALITY: No part of this publication may be reproduced or transmitted other than the intended use by Resene Construction Systems without written consent from the author.

System  
 Integra Flooring System

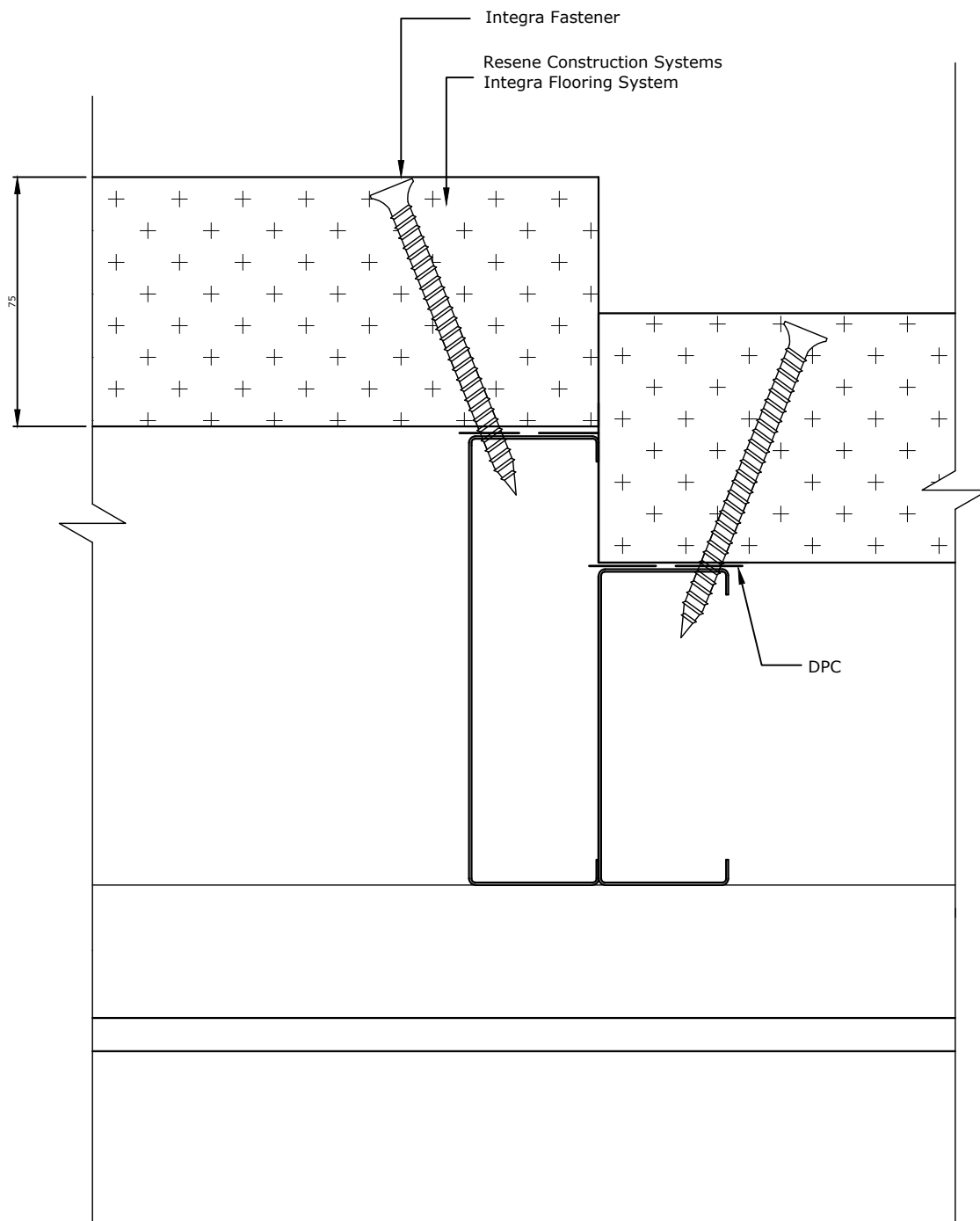
Substrate  
 75mm Integra Panel on Steel Joists

Drawing Name  
 WANZ Bar - Option 2

Scale  
 1 : 2 @ A4

Date  
 1 November 2017

Sheet  
 31.15.14



Joists sized as per Integra Flooring Chart or as per Engineers specification

TradeSpec™ and RenderSpec™ are Registered Trademarks, both Documents are available on the Resene Construction Systems

**Resene**   
**Construction Systems**

CONFIDENTIALITY: No part of this publication may be reproduced or transmitted other than the intended use by Resene Construction Systems without written consent from the author.

System  
 Integra Flooring System

Substrate  
 75mm Integra Panel on Steel Joists

Drawing Name  
 Flooring Stepdown

Scale  
 1 : 2 @ A4

Date  
 1 November 2017

Sheet  
 31.15.15