

Sheet List Table		
Sheet Number	Sheet Title	Sheet Revision Date
17.00.00	Drawing Register	
17.01.10	Isometric (600 Centers)	1 November 2017
17.01.11	Isometric (400 Centers)	1 November 2017
17.02.00	Foundation	1 November 2017
17.02.10	Recessed Foundation - Option 1	1 November 2017
17.03.00	External Corner	1 November 2017
17.04.00	Internal Corner	1 November 2017
17.05.00	Window Sill	1 November 2017
17.02.05	Insulated Foundation - Door Sill	1 November 2017
17.05.60	Door Sill in Foundation Recess - Option 1	1 November 2017
17.05.61	Door Sill in Foundation Recess - Option 2	1 November 2017
17.06.00	Window Jamb	1 November 2017
17.06.50	Garage Door Jamb - Option 1	1 November 2017
17.07.00	Window Head - Option1	1 November 2017
17.07.01	Window Head - Option 2	1 November 2017
17.08.00	Soffit	1 November 2017
17.08.30	Raking Soffit - Option 1	1 November 2017
17.08.35	Sloping Soffit	1 November 2017
17.09.00	Roof Apron	1 November 2017
17.10.00	Vertical Control Joint	1 November 2017
17.10.10	Vertical Junction with Weatherboard - Option 1	1 November 2017
17.10.90	Vertical Junction with Vertical Cedar Weatherboards	1 November 2017
17.11.00	Horizontal Control Joint	1 November 2017
17.12.00	Meter Box Penetration	1 November 2017
17.12.10	Lightweight Fixing	1 November 2017
17.12.20	Pipe Penetration	1 November 2017

TradeSpec™ and RenderSpec™ are Registered Trademarks, both Documents are available on the Resene Construction Systems



CONFIDENTIALITY: No part of this publication may be reproduced or transmitted other than the intended use by Resene Construction Systems without written consent from the author.

System
Integra Facade System

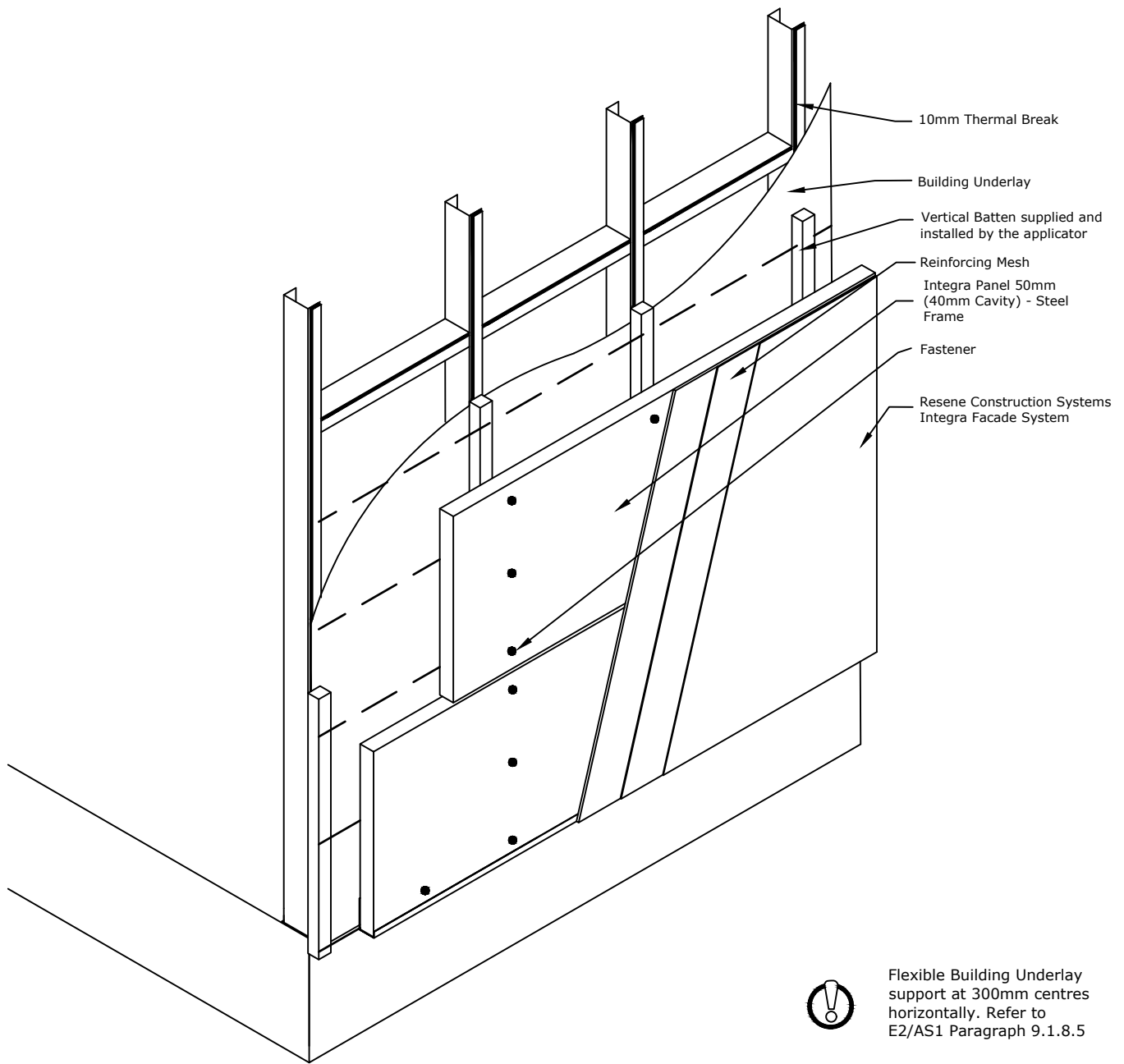
Substrate
Integra Panel 50mm (40mm
Cavity) - Steel Frame

Drawing Name
Drawing Register

Scale
1 : 2 @ A4

Date
29 July 2024

Sheet
17.00.00



TradeSpec™ and RenderSpec™ are Registered Trademarks, both Documents are available on the Resene Construction Systems

Resene 
Construction Systems

CONFIDENTIALITY: No part of this publication may be reproduced or transmitted other than the intended use by Resene Construction Systems without written consent from the author.

System
 Integra Facade System

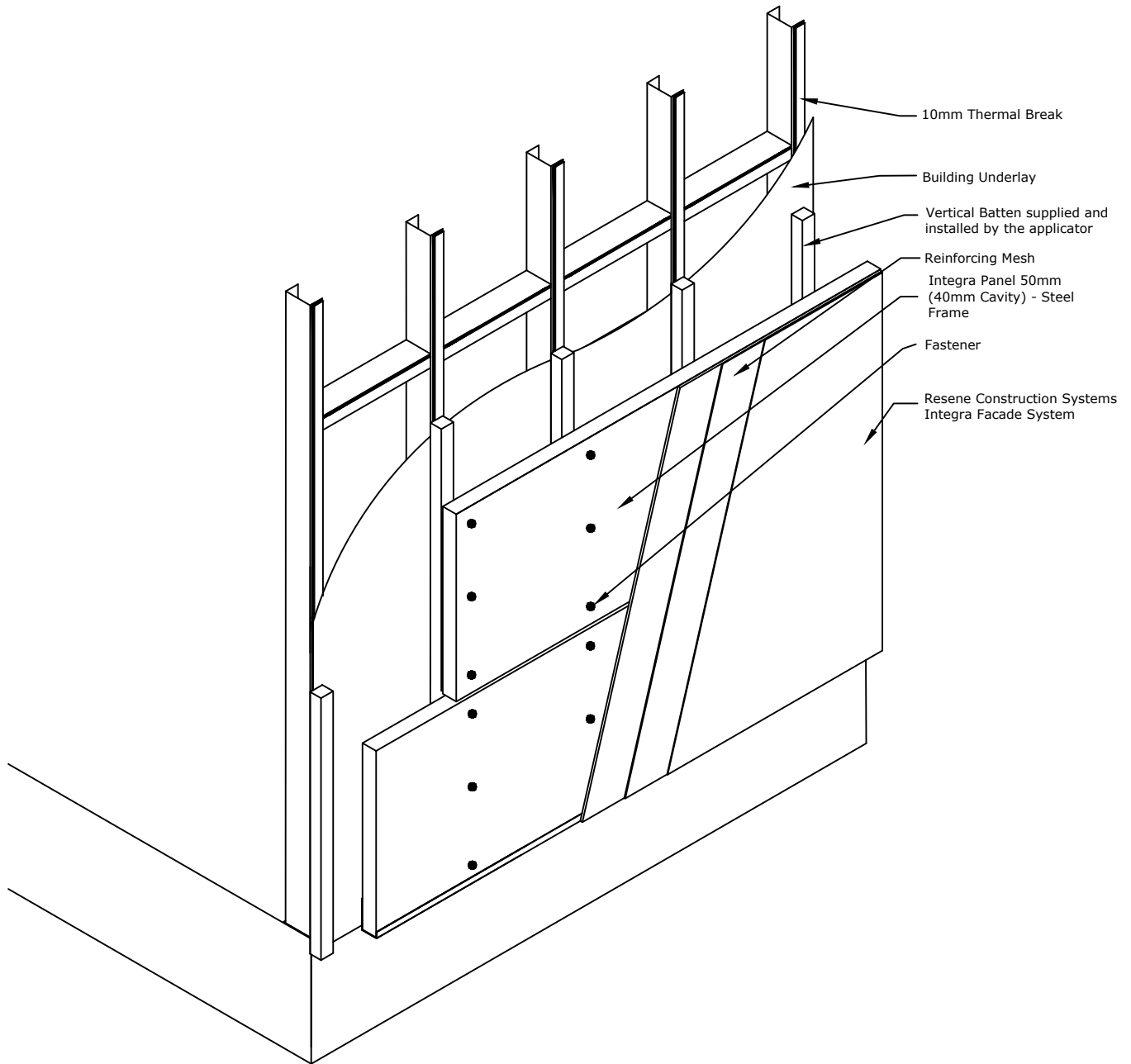
Substrate
 Integra Panel 50mm (40mm Cavity) - Steel Frame

Drawing Name
 Isometric (600 Centers)

Scale
 1 : 2 @ A4

Date
 1 November 2017

Sheet
 17.01.10



TradeSpec™ and RenderSpec™ are Registered Trademarks, both Documents are available on the Resene Construction Systems

Resene 
Construction Systems

CONFIDENTIALITY: No part of this publication may be reproduced or transmitted other than the intended use by Resene Construction Systems without written consent from the author.

System
 Integra Facade System

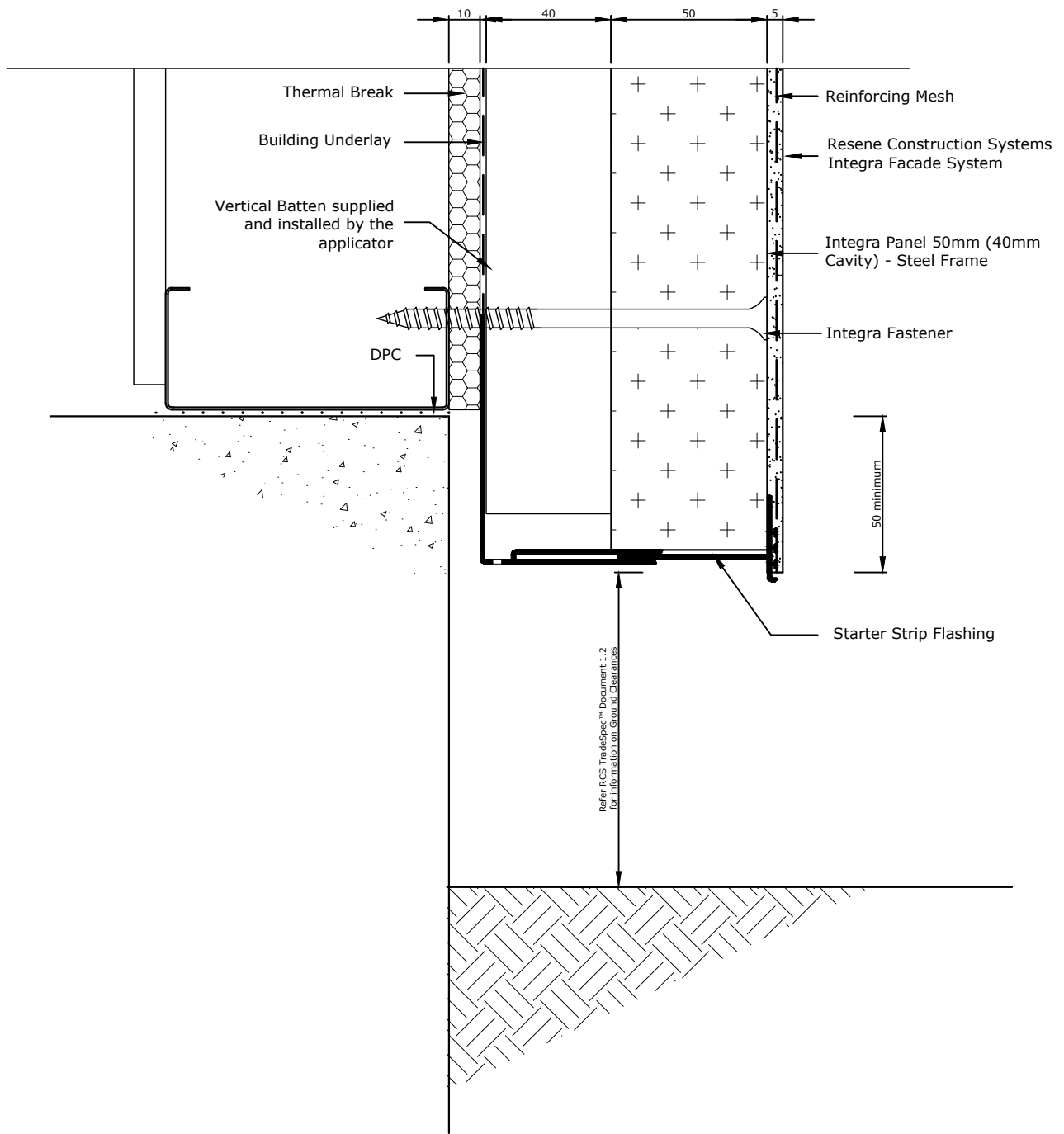
Substrate
 Integra Panel 50mm (40mm Cavity) - Steel Frame

Drawing Name
 Isometric (400 Centers)

Scale
 1:20 @ A4

Date
 1 November 2017

Sheet
 17.01.11



Refer RCS TradeSpec™ Document 1.2 for information on Ground Clearances

TradeSpec™ and RenderSpec™ are Registered Trademarks, both Documents are available on the Resene Construction Systems

Resene 
Construction Systems

CONFIDENTIALITY: No part of this publication may be reproduced or transmitted other than the intended use by Resene Construction Systems without written consent from the author.

System
 Integra Facade System

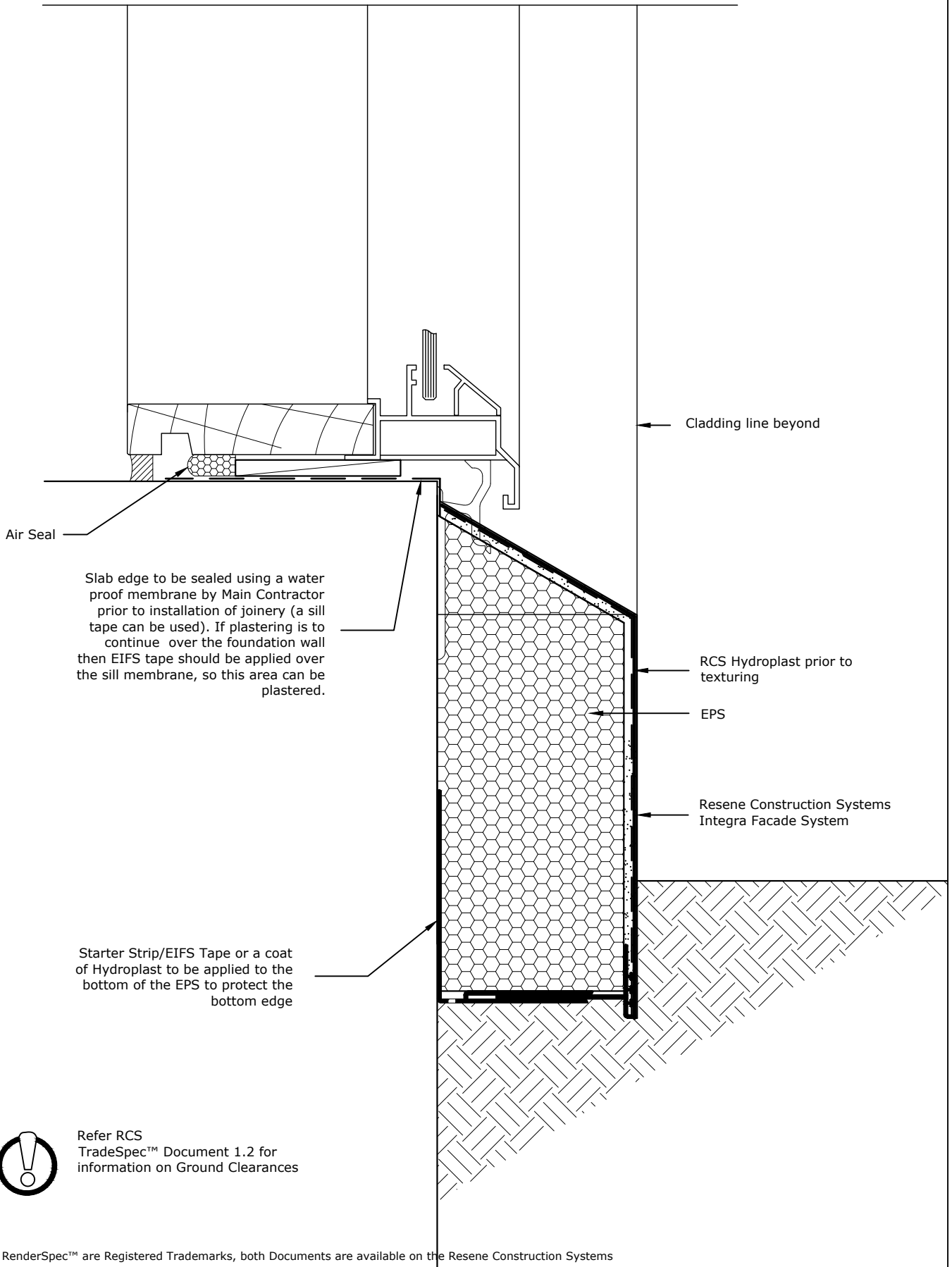
Scale
 1 : 2 @ A4

Substrate
 Integra Panel 50mm (40mm Cavity) - Steel Frame

Date
 1 November 2017

Drawing Name
 Foundation

Sheet
 17.02.00



TradeSpec™ and RenderSpec™ are Registered Trademarks, both Documents are available on the Resene Construction Systems



CONFIDENTIALITY: No part of this publication may be reproduced or transmitted other than the intended use by Resene Construction Systems without written consent from the author.

System
Integra Facade System

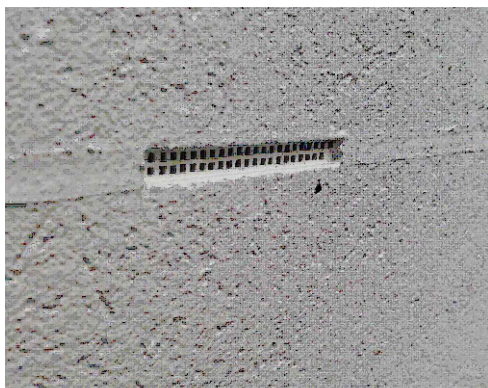
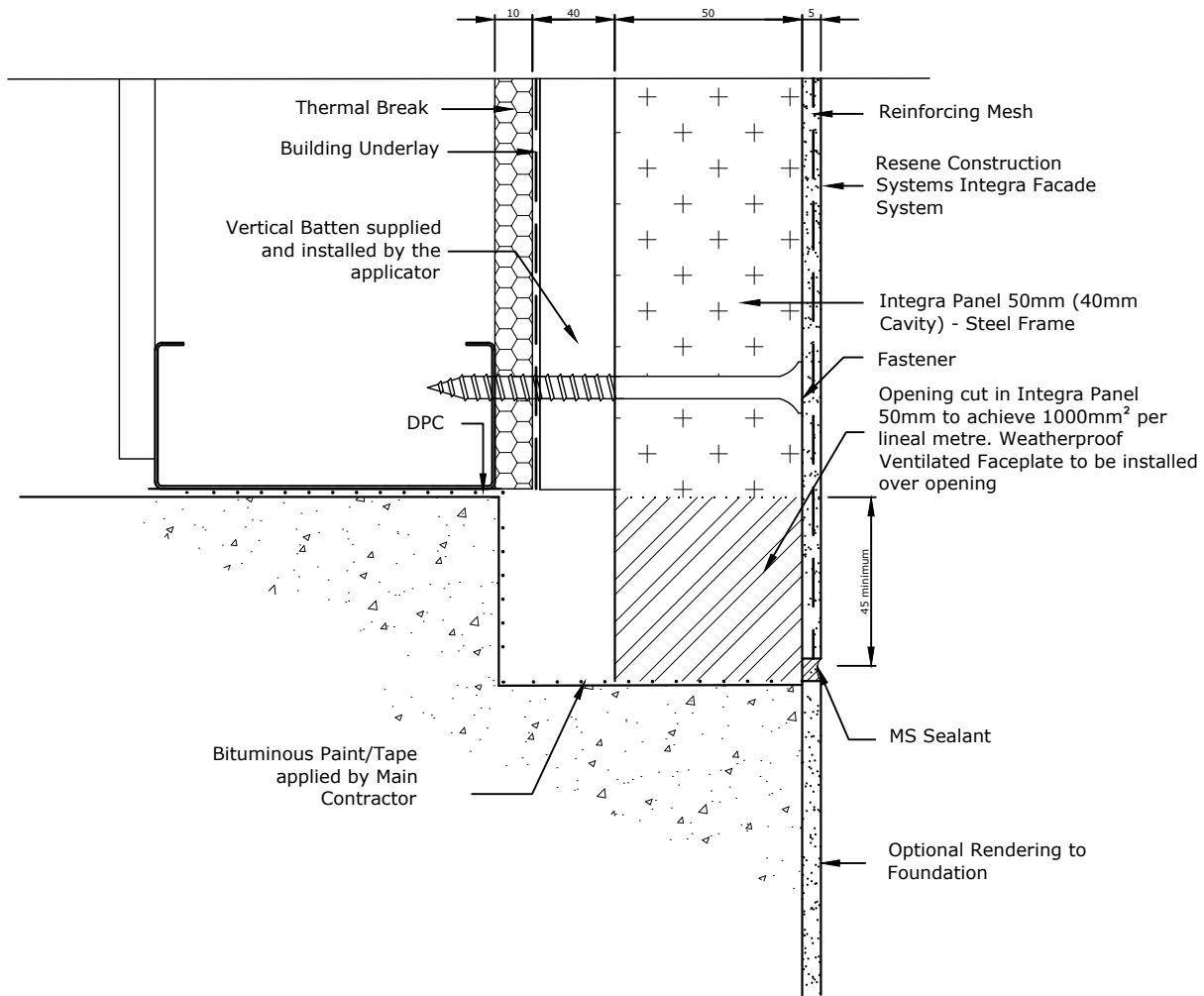
Substrate
Integra Panel 50mm (40mm
Cavity) - Steel Frame

Drawing Name
Insulated Foundation - Door Sill

Scale
1 : 2 @ A4

Date
1 November 2017

Sheet
17.02.05



Refer to NZBC E2/AS1 for information on Ground Clearances

TradeSpec™ and RenderSpec™ are Registered Trademarks, both Documents are available on the Resene Construction Systems

Resene 
Construction Systems

CONFIDENTIALITY: No part of this publication may be reproduced or transmitted other than the intended use by Resene Construction Systems without written consent from the author.

System
 Integra Facade System

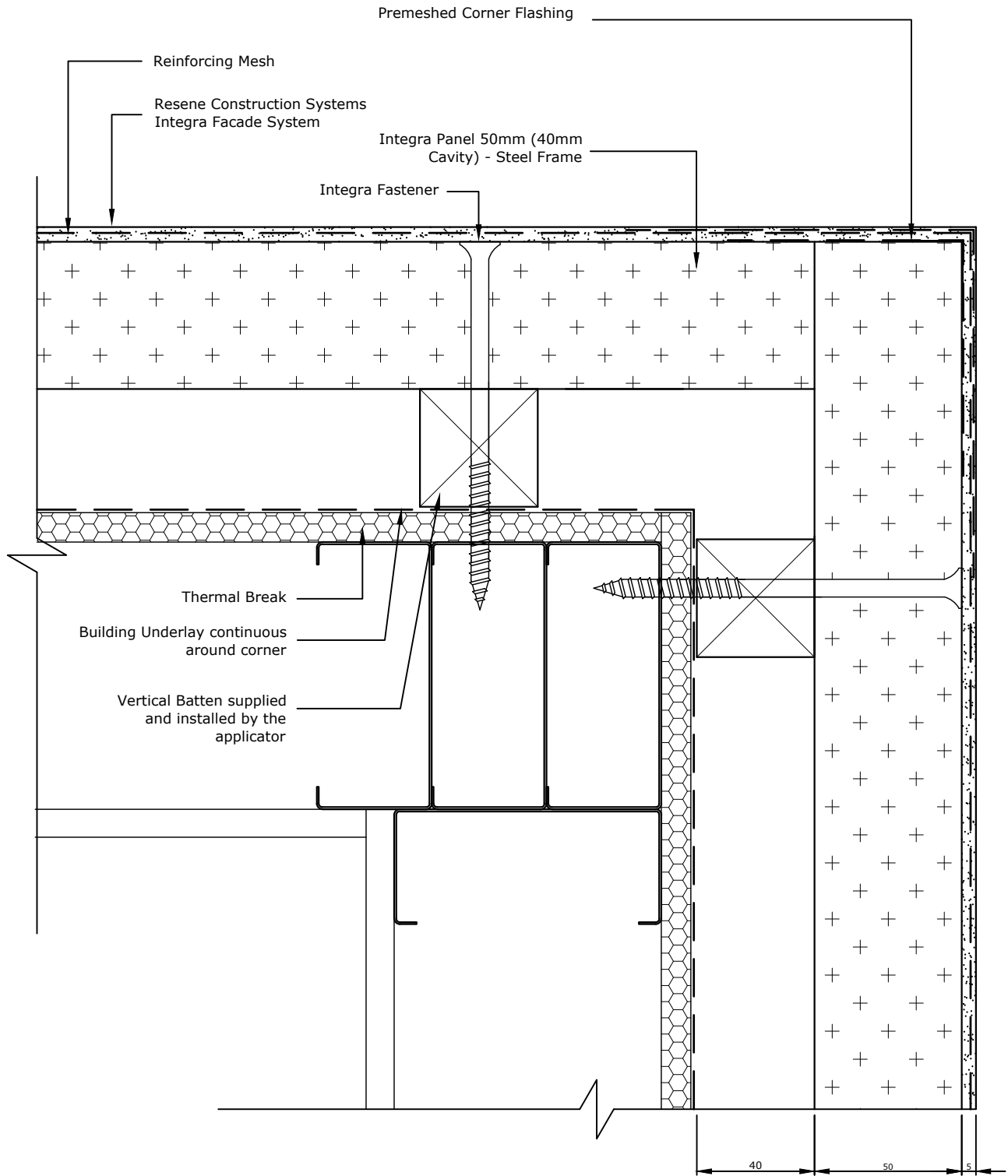
Scale
 1 : 2 @ A4

Substrate
 Integra Panel 50mm (40mm Cavity)
 - Steel Frame

Date
 1 November 2017

Drawing Name
 Recessed Foundation - Option 1

Sheet
 17.02.10



TradeSpec™ and RenderSpec™ are Registered Trademarks, both Documents are available on the Resene Construction Systems

Resene 
Construction Systems

CONFIDENTIALITY: No part of this publication may be reproduced or transmitted other than the intended use by Resene Construction Systems without written consent from the author.

System
 Integra Facade System

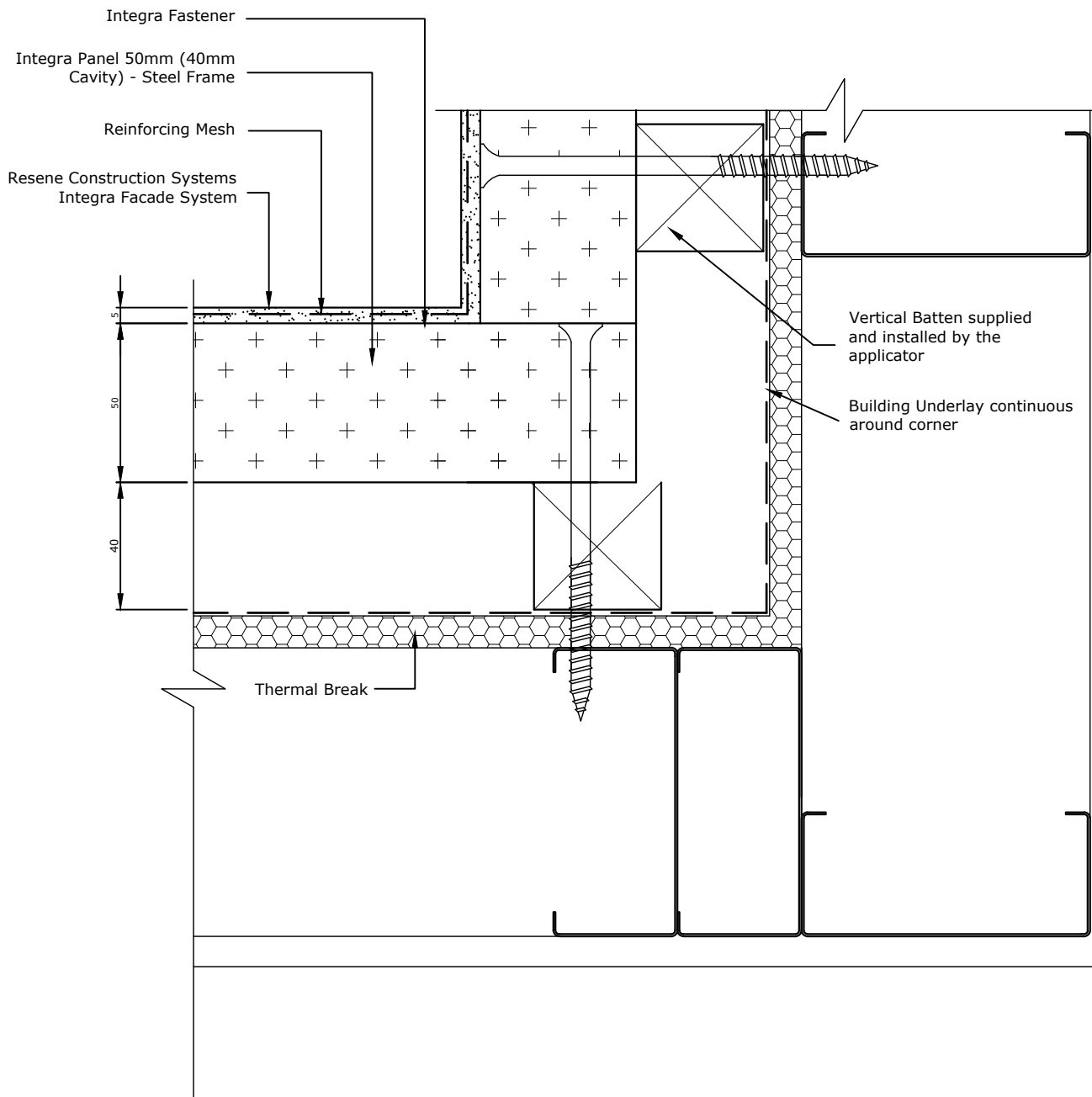
Substrate
 Integra Panel 50mm (40mm
 Cavity) - Steel Frame

Drawing Name
 External Corner

Scale
 1 : 2 @ A4

Date
 1 November 2017

Sheet
 17.03.00



Mesh to be wrapped continuously around the internal corner, if there is a break in the mesh then an additional layer of Sticky Mesh must be used

TradeSpec™ and RenderSpec™ are Registered Trademarks, both Documents are available on the Resene Construction Systems

Resene 
Construction Systems

CONFIDENTIALITY: No part of this publication may be reproduced or transmitted other than the intended use by Resene Construction Systems without written consent from the author.

System
 Integra Facade System

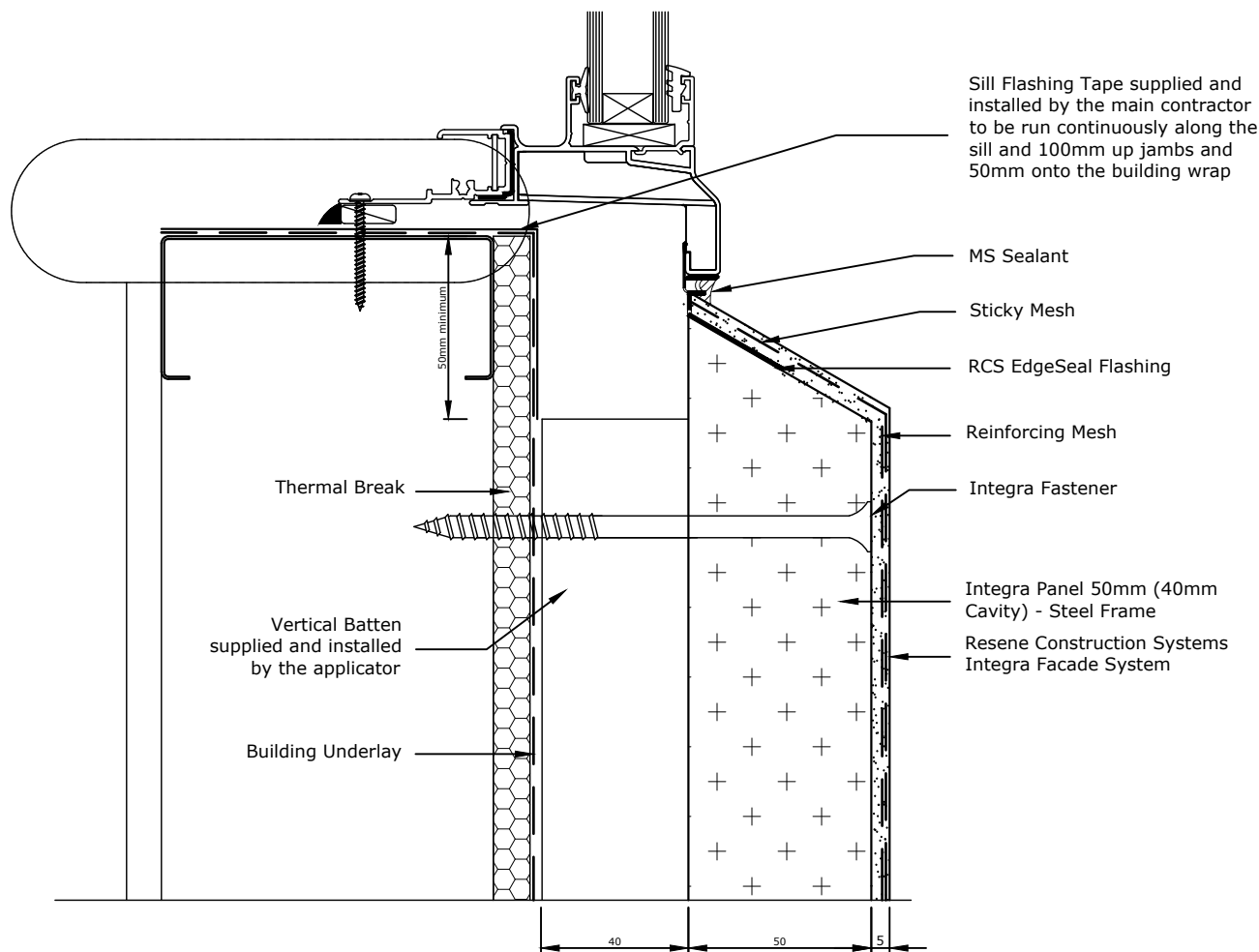
Substrate
 Integra Panel 50mm (40mm
 Cavity) - Steel Frame

Drawing Name
 Internal Corner

Scale
 1 : 2 @ A4

Date
 1 November 2017

Sheet
 17.04.00



Allow a 25mm Gap between the back of the joinery and external facing timber framing to allow the sill flashing to fit.

TradeSpec™ and RenderSpec™ are Registered Trademarks, both Documents are available on the Resene Construction Systems

Resene 
Construction Systems

CONFIDENTIALITY: No part of this publication may be reproduced or transmitted other than the intended use by Resene Construction Systems without written consent from the author.

System
 Integra Facade System

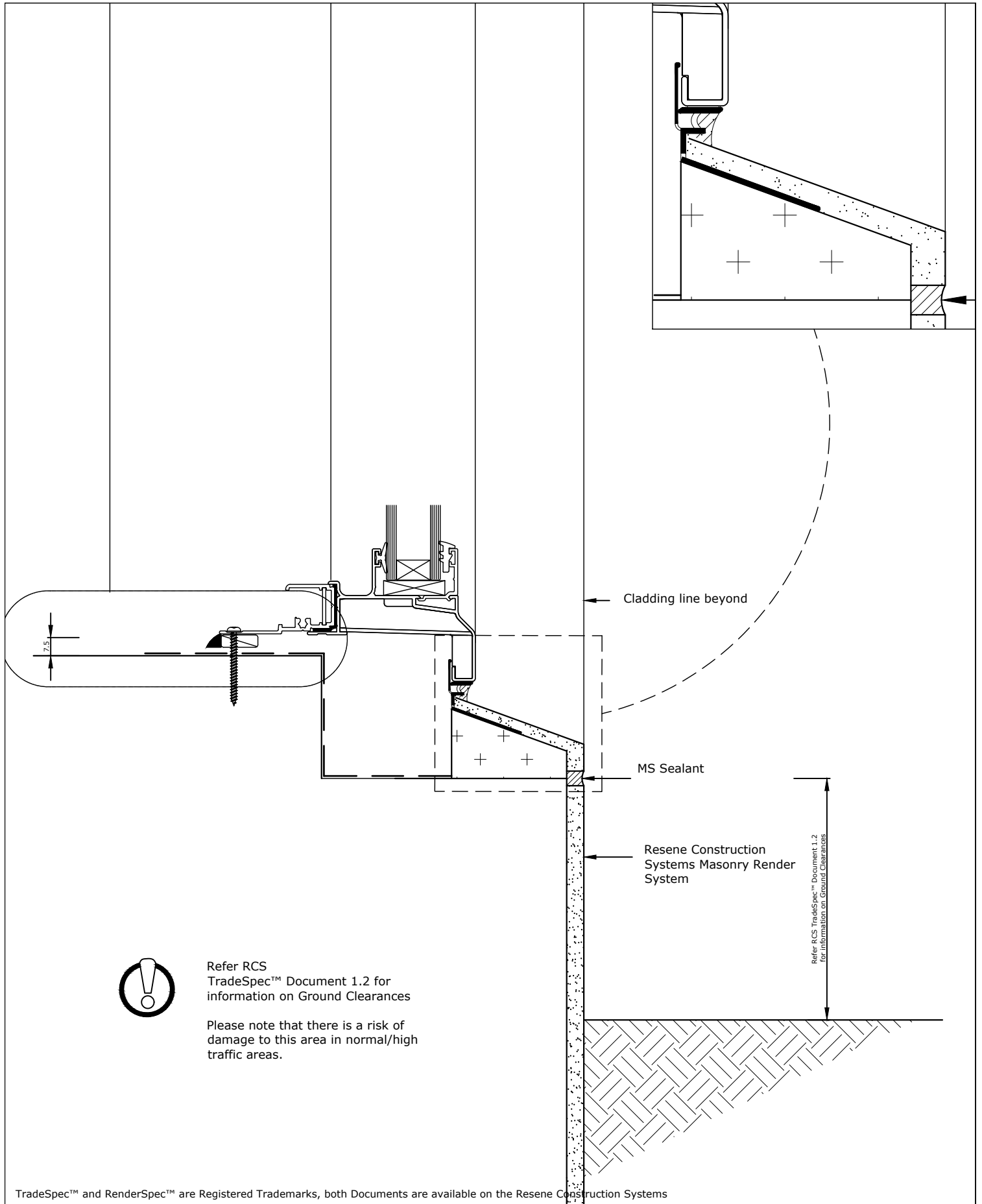
Substrate
 Integra Panel 50mm (40mm
 Cavity) - Steel Frame

Drawing Name
 Window Sill

Scale
 1 : 2 @ A4

Date
 1 November 2017

Sheet
 17.05.00



Refer RCS TradeSpec™ Document 1.2 for information on Ground Clearances

Please note that there is a risk of damage to this area in normal/high traffic areas.

TradeSpec™ and RenderSpec™ are Registered Trademarks, both Documents are available on the Resene Construction Systems

Resene 
Construction Systems

CONFIDENTIALITY: No part of this publication may be reproduced or transmitted other than the intended use by Resene Construction Systems without written consent from the author.

System
 Integra Facade System

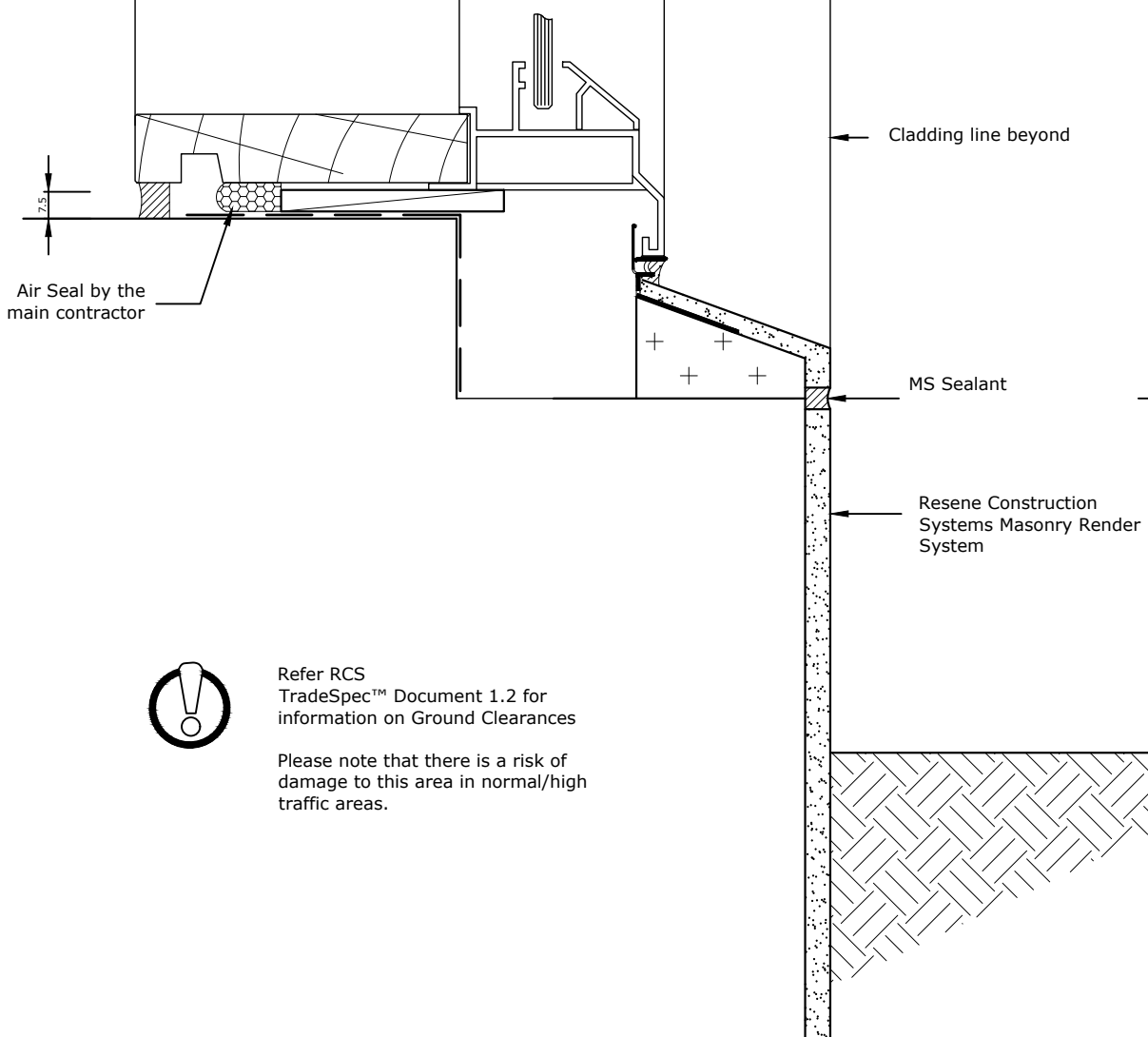
Substrate
 Integra Panel 50mm (40mm Cavity)
 - Steel Frame

Drawing Name
 Door Sill in Foundation Recess - Option 1

Scale
 1 : 2 @ A4

Date
 1 November 2017

Sheet
 17.05.60



Refer RCS TradeSpec™ Document 1.2 for information on Ground Clearances

Please note that there is a risk of damage to this area in normal/high traffic areas.

TradeSpec™ and RenderSpec™ are Registered Trademarks, both Documents are available on the Resene Construction Systems

Resene 
Construction Systems

CONFIDENTIALITY: No part of this publication may be reproduced or transmitted other than the intended use by Resene Construction Systems without written consent from the author.

System
 Integra Facade System

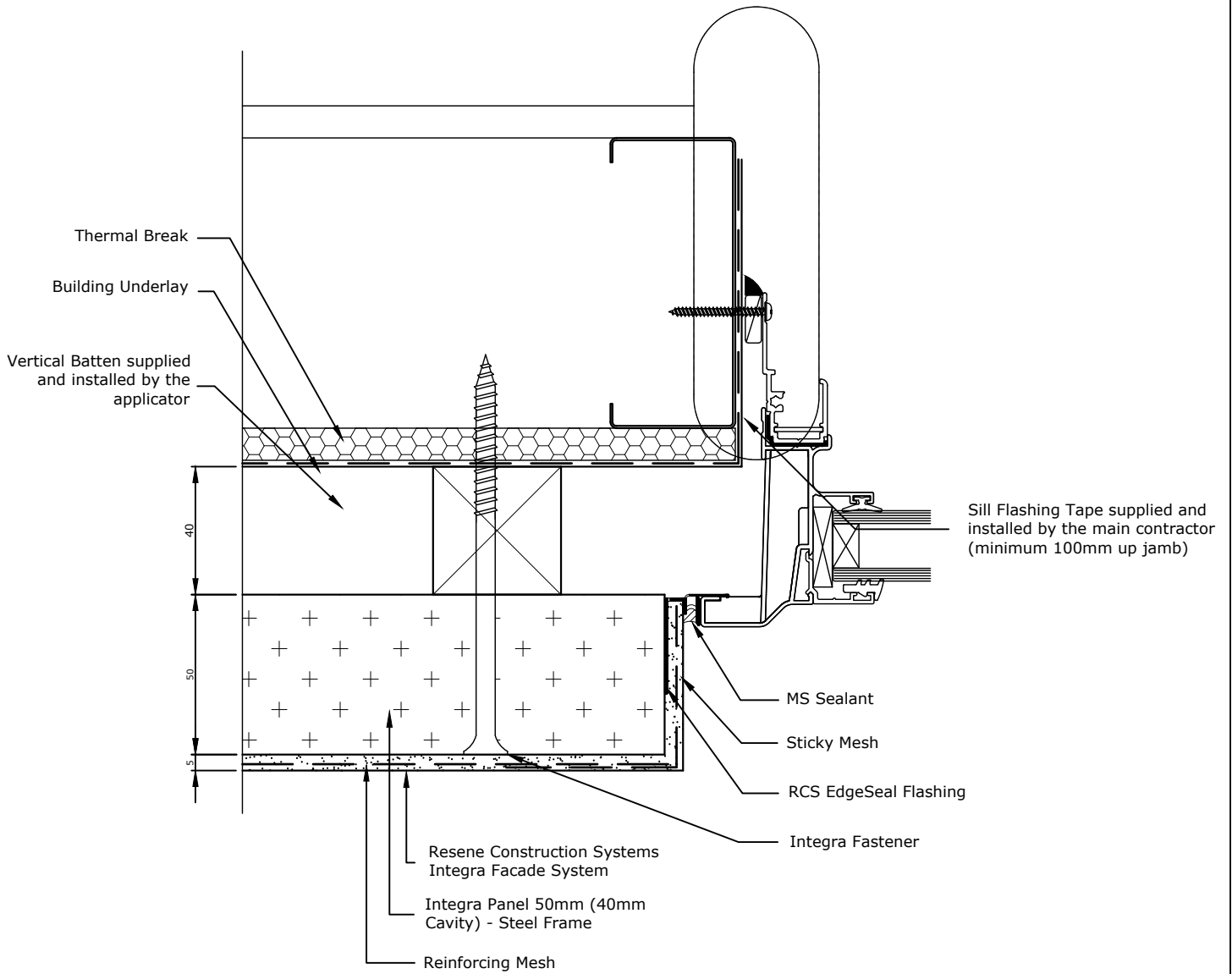
Substrate
 Integra Panel 50mm (40mm Cavity)
 - Steel Frame

Drawing Name
 Door Sill in Foundation Recess - Option 2

Scale
 1 : 2 @ A4

Date
 1 November 2017

Sheet
 17.05.61



Allow a 25mm Gap between the back of the joinery and external facing timber framing to allow the jamb flashing to fit.

TradeSpec™ and RenderSpec™ are Registered Trademarks, both Documents are available on the Resene Construction Systems

Resene 
Construction Systems

CONFIDENTIALITY: No part of this publication may be reproduced or transmitted other than the intended use by Resene Construction Systems without written consent from the author.

System
 Integra Facade System

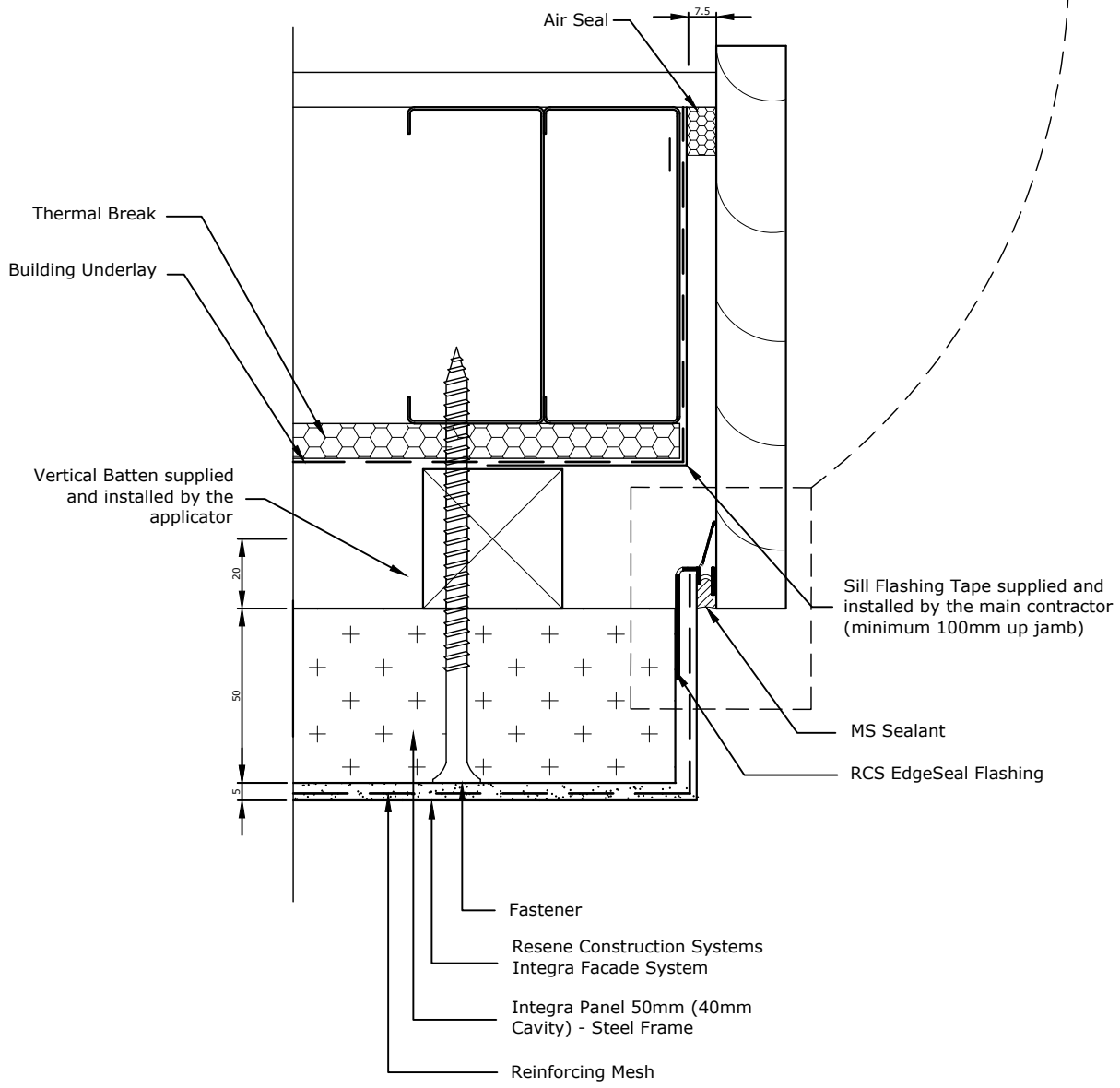
Substrate
 Integra Panel 50mm (40mm
 Cavity) - Steel Frame

Drawing Name
 Window Jamb

Scale
 1 : 2 @ A4

Date
 1 November 2017

Sheet
 17.06.00



TradeSpec™ and RenderSpec™ are Registered Trademarks, both Documents are available on the Resene Construction Systems



CONFIDENTIALITY: No part of this publication may be reproduced or transmitted other than the intended use by Resene Construction Systems without written consent from the author.

System
Integra Facade System

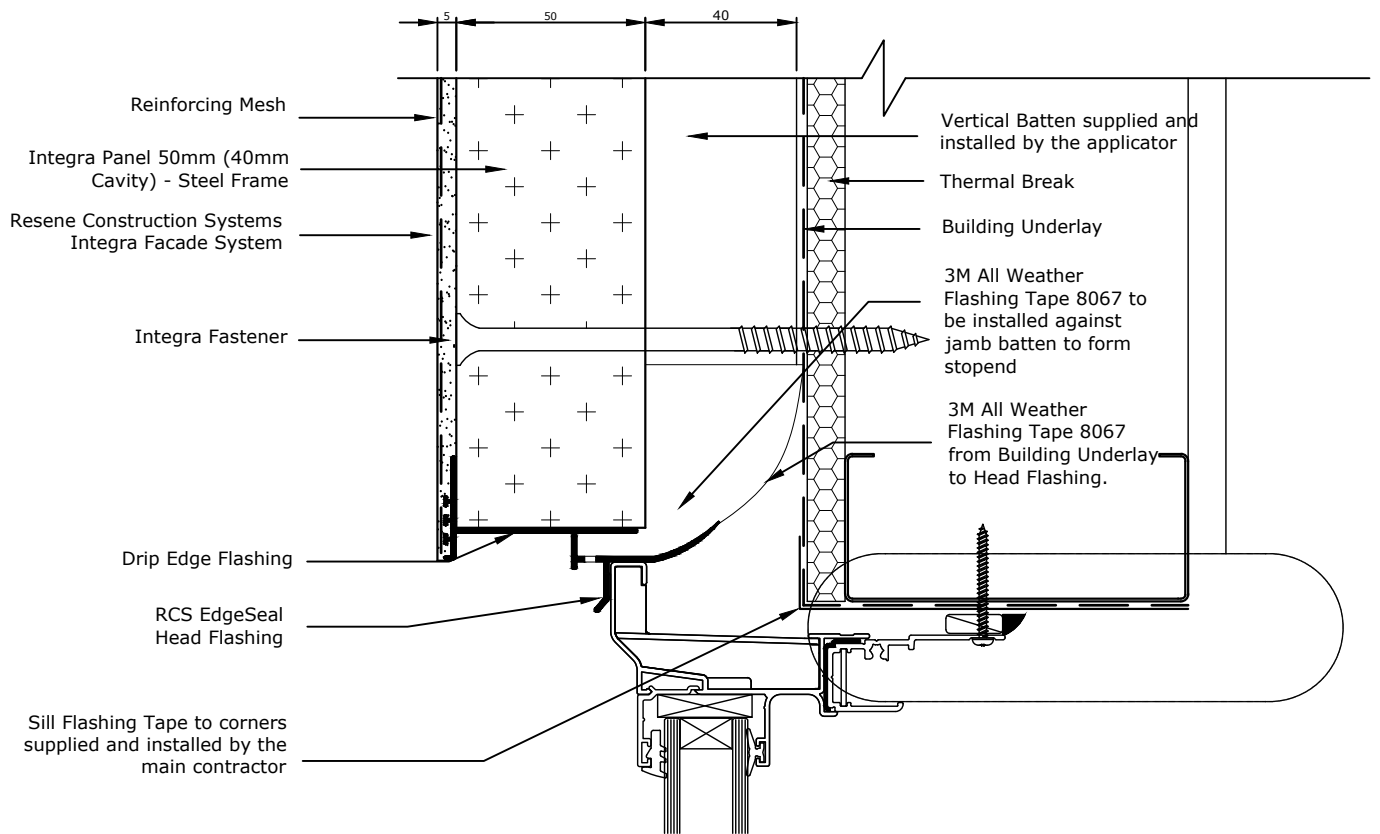
Substrate
Integra Panel 50mm (40mm Cavity)
- Steel Frame

Drawing Name
Garage Door Jamb - Option 1

Scale
1 : 2 @ A4

Date
15 May 2018

Sheet
17.06.50



The RCS EdgeSealHead Flashing must be installed so that it extends 10mm either side of the jamb extrusion.

TradeSpec™ and RenderSpec™ are Registered Trademarks, both Documents are available on the Resene Construction Systems

Resene 
Construction Systems

CONFIDENTIALITY: No part of this publication may be reproduced or transmitted other than the intended use by Resene Construction Systems without written consent from the author.

System
 Integra Facade System

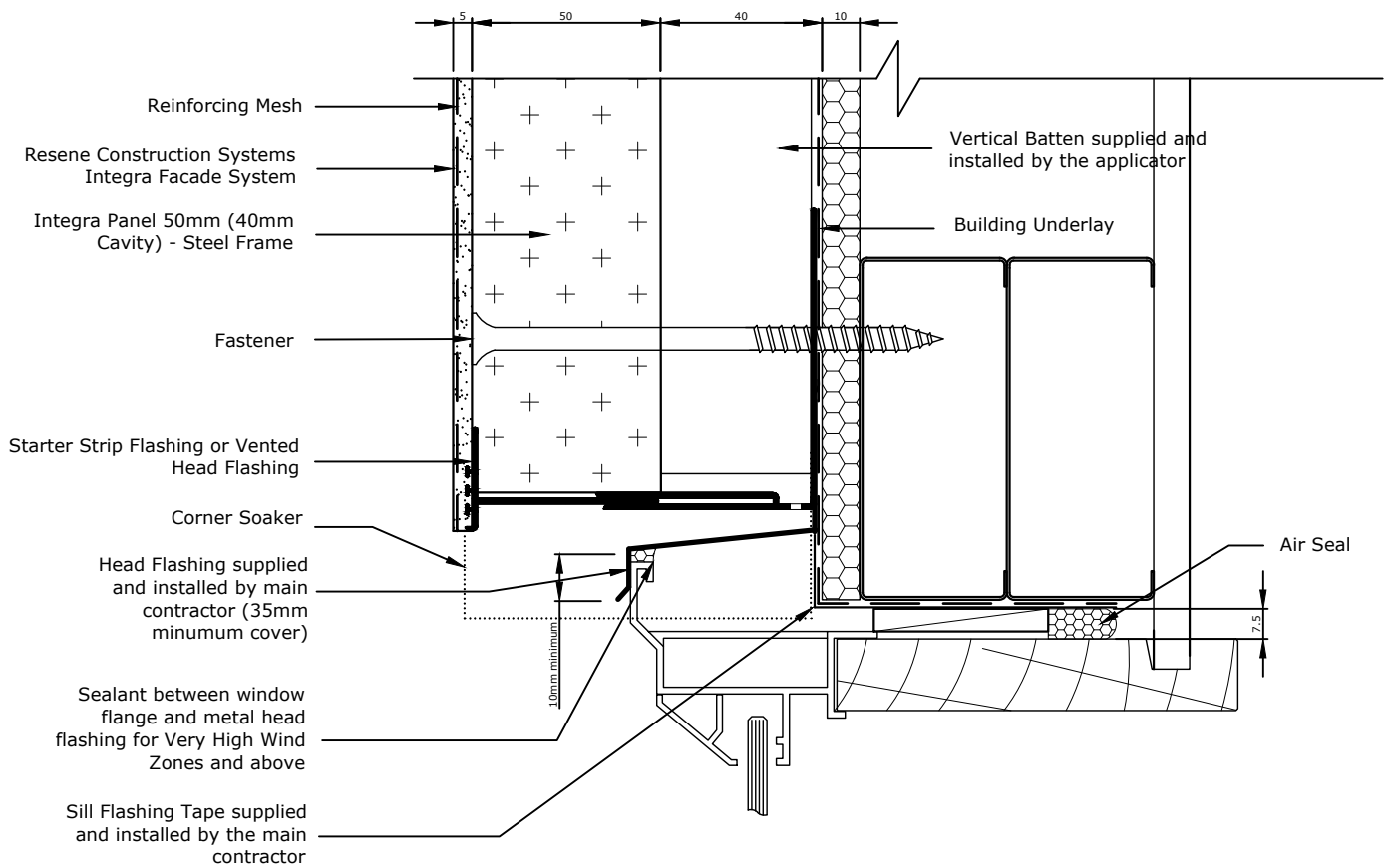
Substrate
 Integra Panel 50mm (40mm Cavity) - Steel Frame

Drawing Name
 Window Head - Option1

Scale
 1 : 2 @ A4

Date
 1 November 2017

Sheet
 17.07.00



5mm clearance must be maintained between the starter strip and the head flashing

Head flashing must be taped to the Building Underlay by the main contractor/window installer using a tape that is compatible with the Building Underlay

Head Flashing to have a minimum 15° fall

The Head Flashing must be installed so that it extends 10mm either side of the jamb extrusion.

TradeSpec™ and RenderSpec™ are Registered Trademarks, both Documents are available on the Resene Construction Systems

Resene 
Construction Systems

CONFIDENTIALITY: No part of this publication may be reproduced or transmitted other than the intended use by Resene Construction Systems without written consent from the author.

System
 Integra Facade System

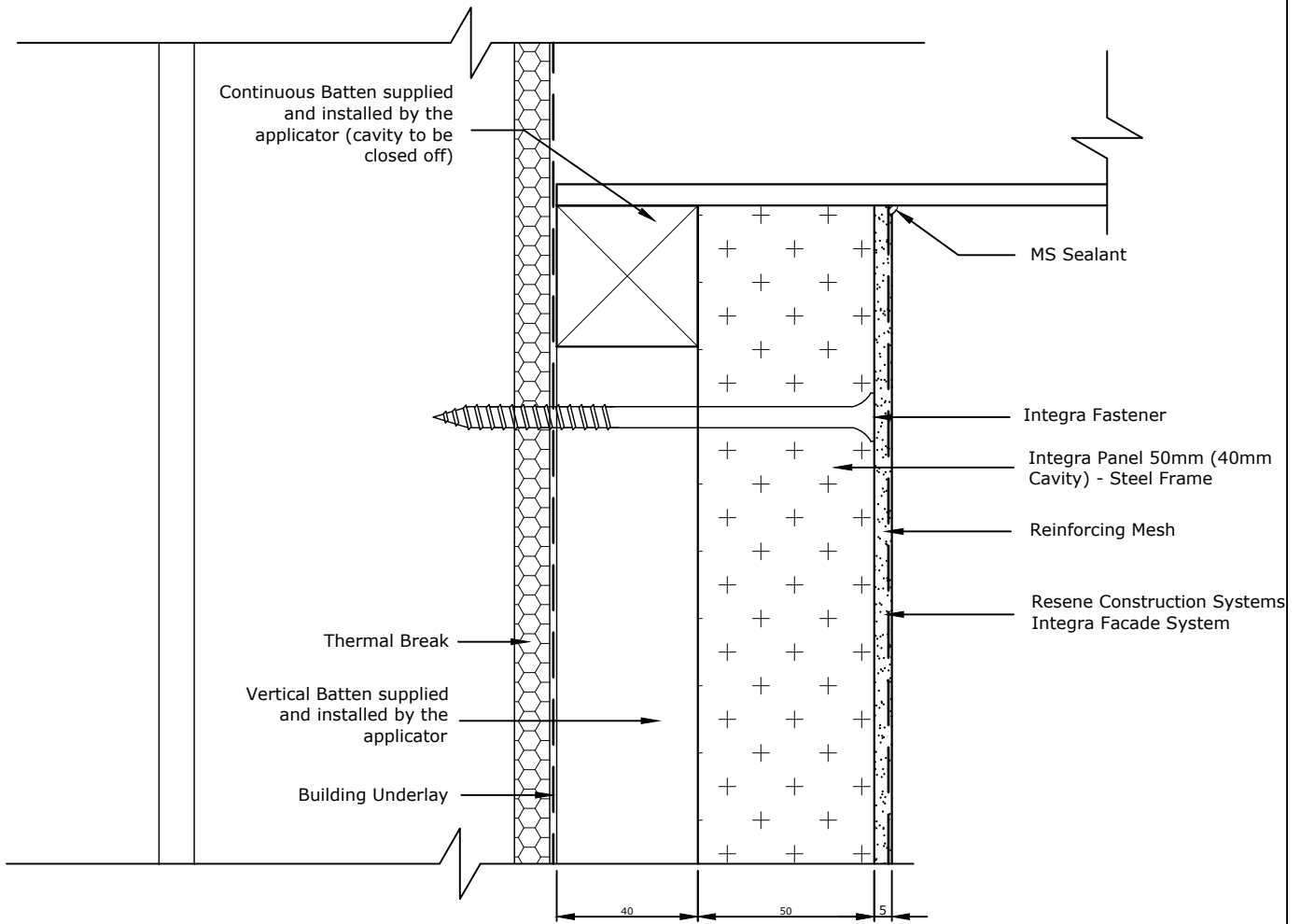
Substrate
 Integra Panel 50mm (40mm Cavity)
 - Steel Frame

Drawing Name
 Window Head - Option 2

Scale
 1 : 2 @ A4

Date
 1 November 2017

Sheet
 17.07.01



TradeSpec™ and RenderSpec™ are Registered Trademarks, both Documents are available on the Resene Construction Systems

Resene 
Construction Systems

CONFIDENTIALITY: No part of this publication may be reproduced or transmitted other than the intended use by Resene Construction Systems without written consent from the author.

System
 Integra Facade System

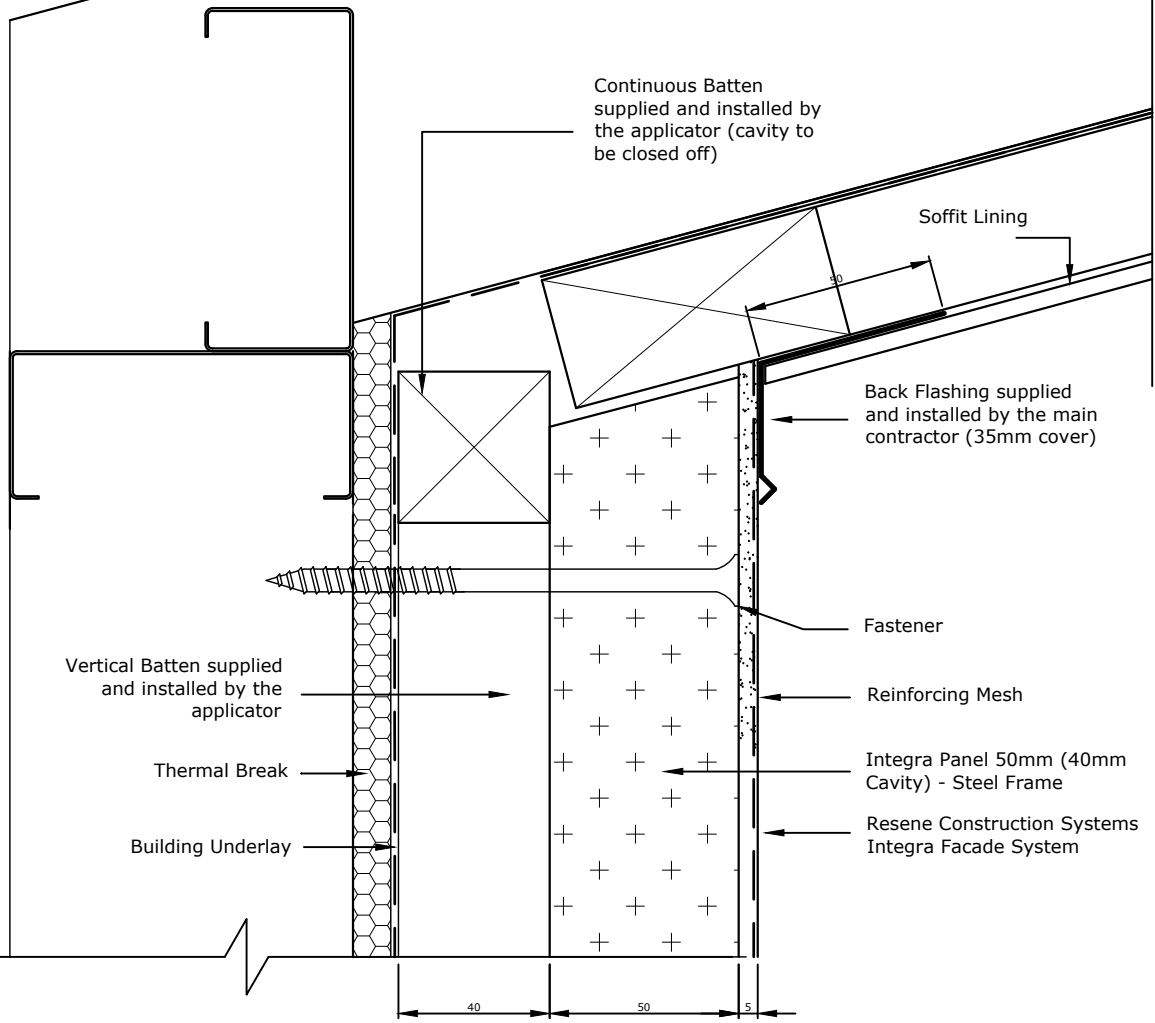
Substrate
 Integra Panel 50mm (40mm Cavity)
 - Steel Frame

Drawing Name
 Soffit

Scale
 1 : 2 @ A4

Date
 1 November 2017

Sheet
 17.08.00



TradeSpec™ and RenderSpec™ are Registered Trademarks, both Documents are available on the Resene Construction Systems



CONFIDENTIALITY: No part of this publication may be reproduced or transmitted other than the intended use by Resene Construction Systems without written consent from the author.

System
Integra Facade System

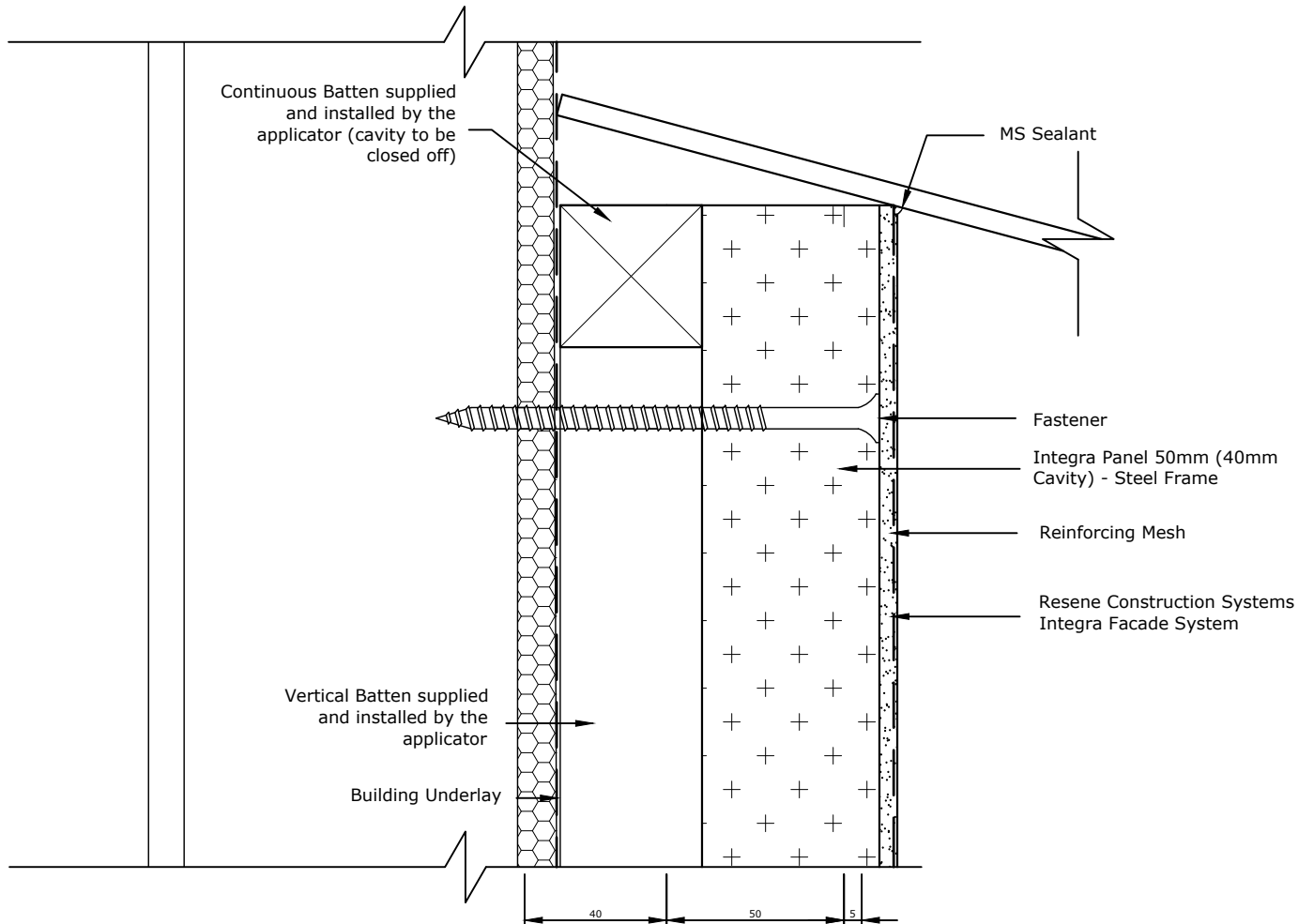
Substrate
Integra Panel 50mm (40mm Cavity)
- Steel Frame

Drawing Name
Raking Soffit - Option 1

Scale
1 : 2 @ A4

Date
1 November 2017

Sheet
17.08.30



TradeSpec™ and RenderSpec™ are Registered Trademarks, both Documents are available on the Resene Construction Systems

Resene 
Construction Systems

CONFIDENTIALITY: No part of this publication may be reproduced or transmitted other than the intended use by Resene Construction Systems without written consent from the author.

System
 Integra Facade System

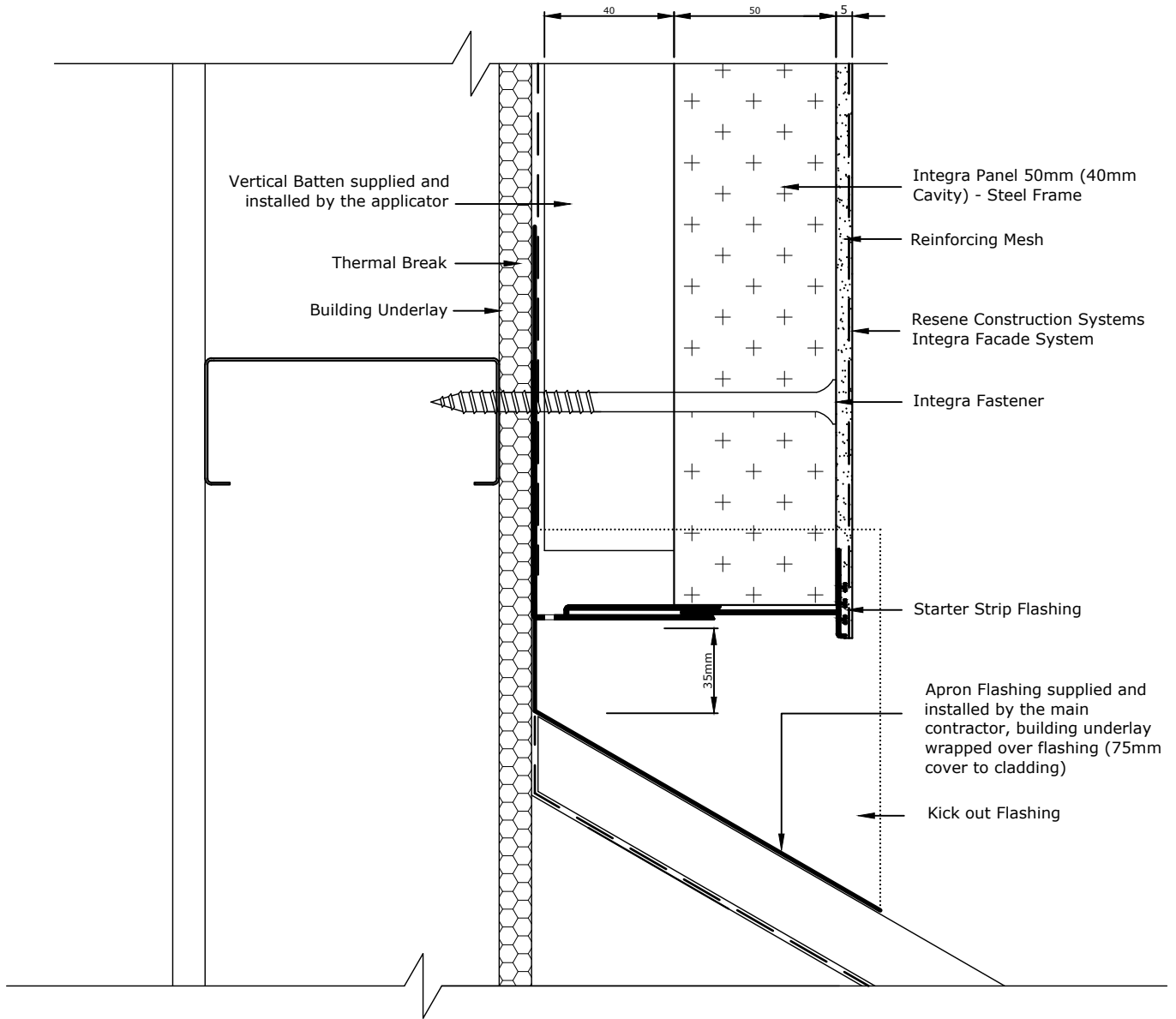
Substrate
 Integra Panel 50mm (40mm Cavity)
 - Steel Frame

Drawing Name
 Sloping Soffit

Scale
 1 : 2 @ A4

Date
 16 May 2018

Sheet
 17.08.35



Refer RCS TradeSpec™ Document 1.2 for information on Roof Clearances

Metal flashing must be taped to the Building Underlay or covered with a second layer of wrap by the main contractor/window installer

TradeSpec™ and RenderSpec™ are Registered Trademarks, both Documents are available on the Resene Construction Systems

Resene 
Construction Systems

CONFIDENTIALITY: No part of this publication may be reproduced or transmitted other than the intended use by Resene Construction Systems without written consent from the author.

System
 Integra Facade System

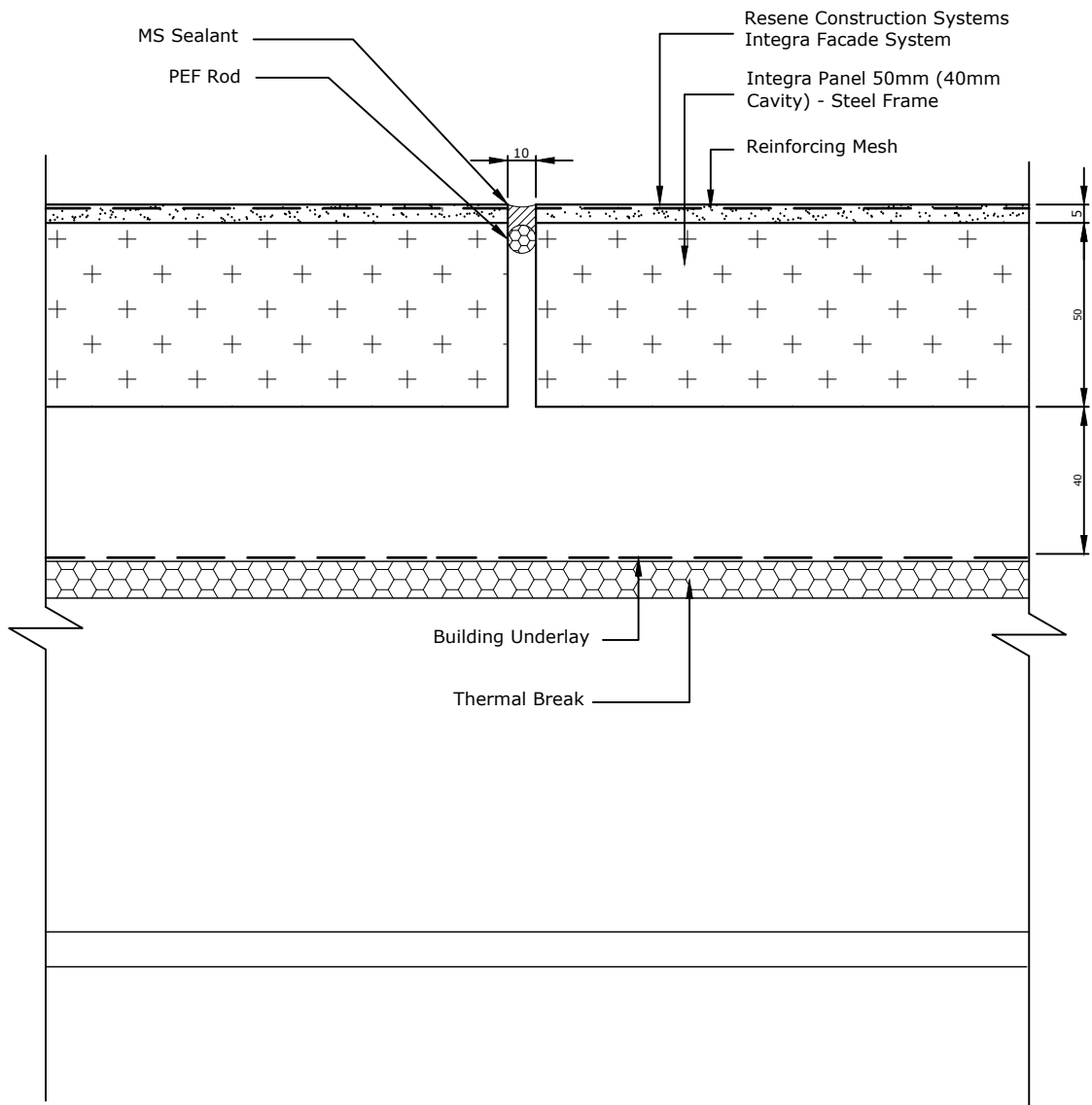
Scale
 1 : 2 @ A4

Substrate
 Integra Panel 50mm (40mm Cavity)
 - Steel Frame

Date
 1 November 2017

Drawing Name
 Roof Apron

Sheet
 17.09.00



All Control Joint spacings and setouts are the responsibility of the Designer, for suggested locations refer to RCS TradeSpec™ Document 1.4

TradeSpec™ and RenderSpec™ are Registered Trademarks, both Documents are available on the Resene Construction Systems

Resene 
Construction Systems

CONFIDENTIALITY: No part of this publication may be reproduced or transmitted other than the intended use by Resene Construction Systems without written consent from the author.

System
 Integra Facade System

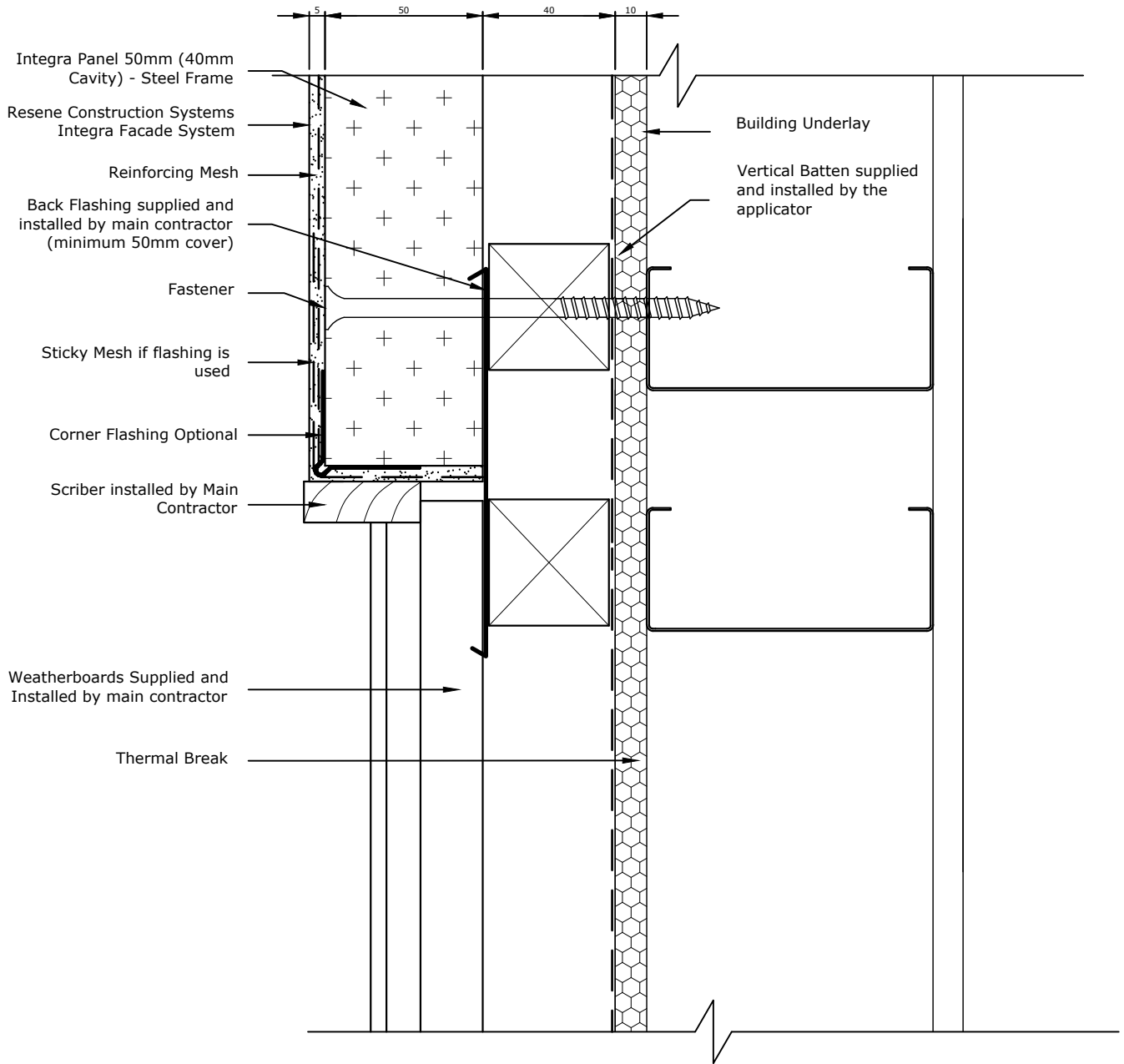
Substrate
 Integra Panel 50mm (40mm Cavity)
 - Steel Frame

Drawing Name
 Vertical Control Joint

Scale
 1 : 2 @ A4

Date
 1 November 2017

Sheet
 17.10.00



TradeSpec™ and RenderSpec™ are Registered Trademarks, both Documents are available on the Resene Construction Systems

Resene 
Construction Systems

CONFIDENTIALITY: No part of this publication may be reproduced or transmitted other than the intended use by Resene Construction Systems without written consent from the author.

System
 Integra Facade System

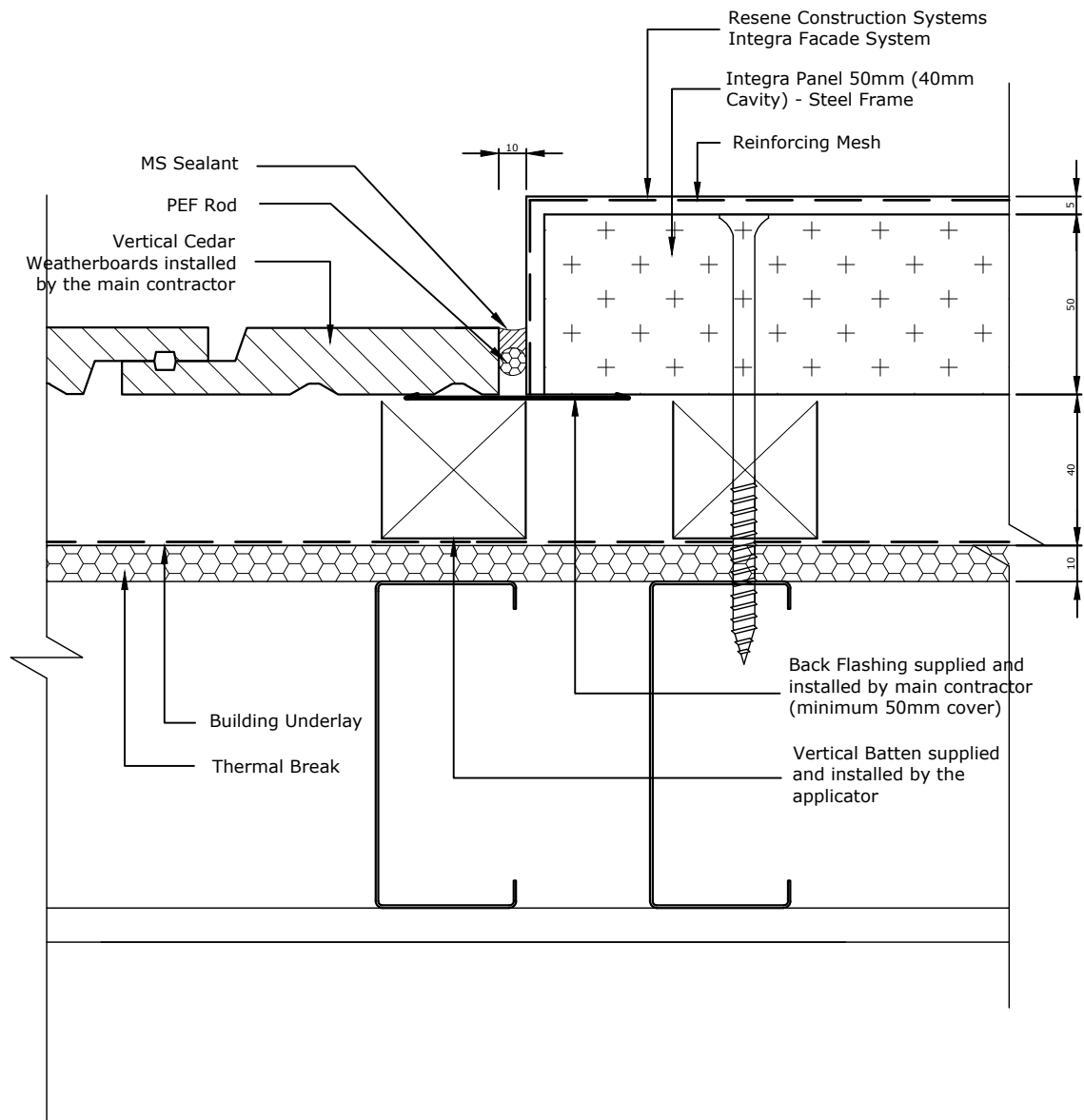
Substrate
 Integra Panel 50mm (40mm Cavity)
 - Steel Frame

Drawing Name
 Vertical Junction with Weatherboard - Option 1

Scale
 1 : 2 @ A4

Date
 29 July 2024

Sheet
 17.10.10



All Control Joint spacings and setouts are the responsibility of the Designer, for suggested locations refer to RCS TradeSpec™ Document 1.4

TradeSpec™ and RenderSpec™ are Registered Trademarks, both Documents are available on the Resene Construction Systems

Resene 
Construction Systems

CONFIDENTIALITY: No part of this publication may be reproduced or transmitted other than the intended use by Resene Construction Systems without written consent from the author.

System
 Integra Facade System

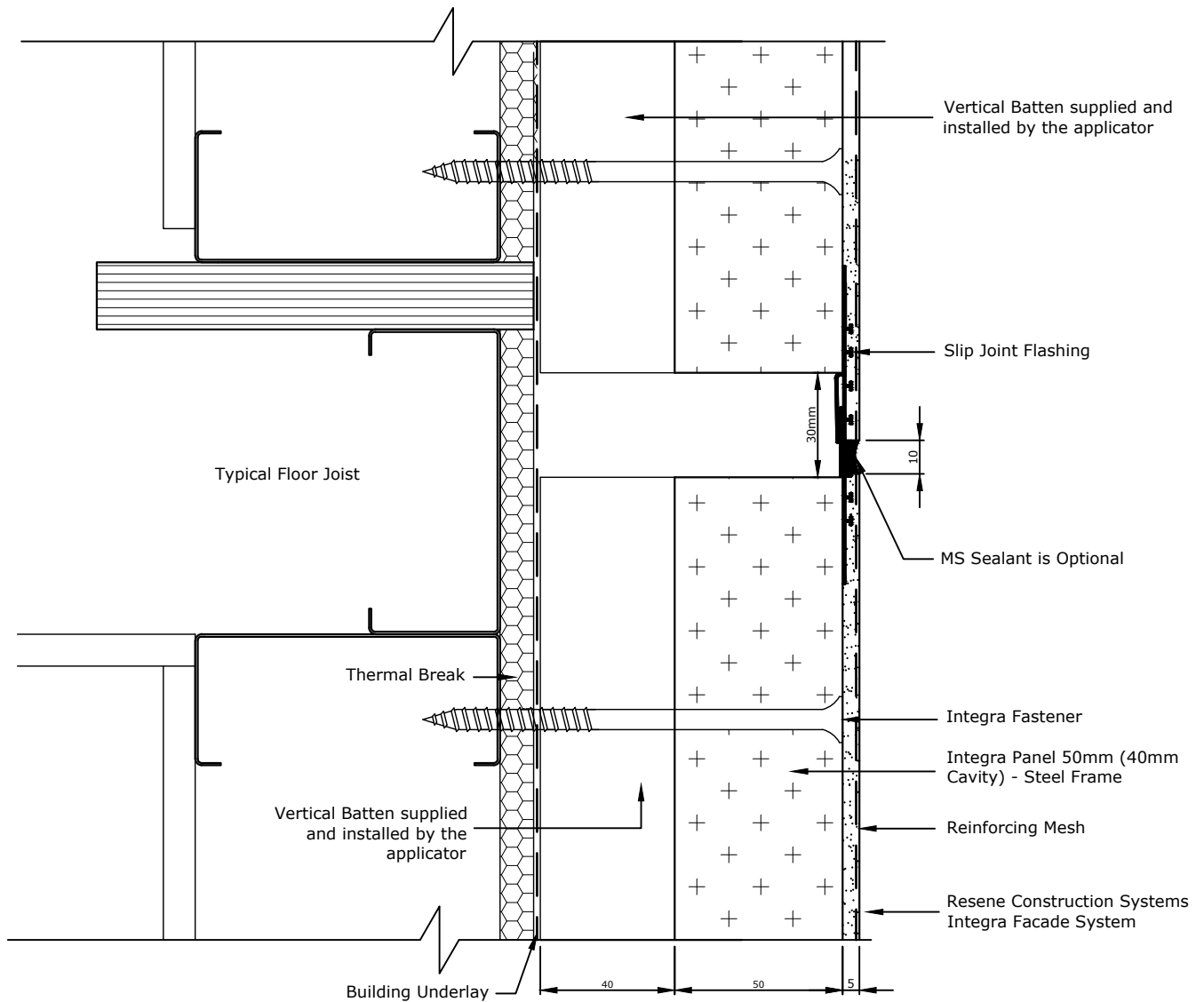
Scale
 1 : 2 @ A4

Substrate
 Integra Panel 50mm (40mm Cavity)
 - Steel Frame

Date
 1 November 2017

Drawing Name
 Vertical Junction with Vertical Cedar Weatherboards

Sheet
 17.10.90



All Control Joint spacings and setouts are the responsibility of the Designer, for suggested locations refer to RCS TradeSpec™ Document 1.4

Please note that there should be no fixings into the floor joists, the substrate should be left floating over this point.

Continuous cavities must not be limited to two-storeys or 7m in height in accordance with E2/AS1 Paragraph 9.1.9.4.

TradeSpec™ and RenderSpec™ are Registered Trademarks, both Documents are available on the Resene Construction Systems

Resene 
Construction Systems

CONFIDENTIALITY: No part of this publication may be reproduced or transmitted other than the intended use by Resene Construction Systems without written consent from the author.

System
 Integra Facade System

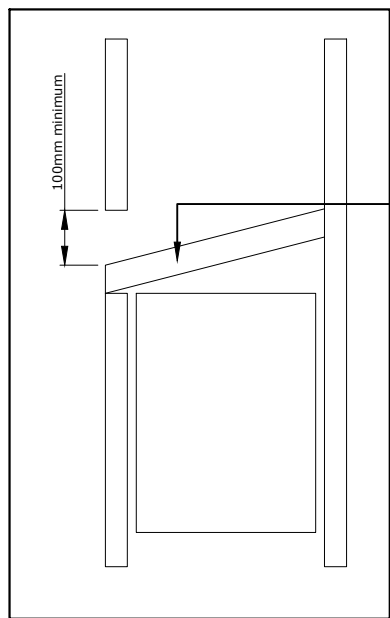
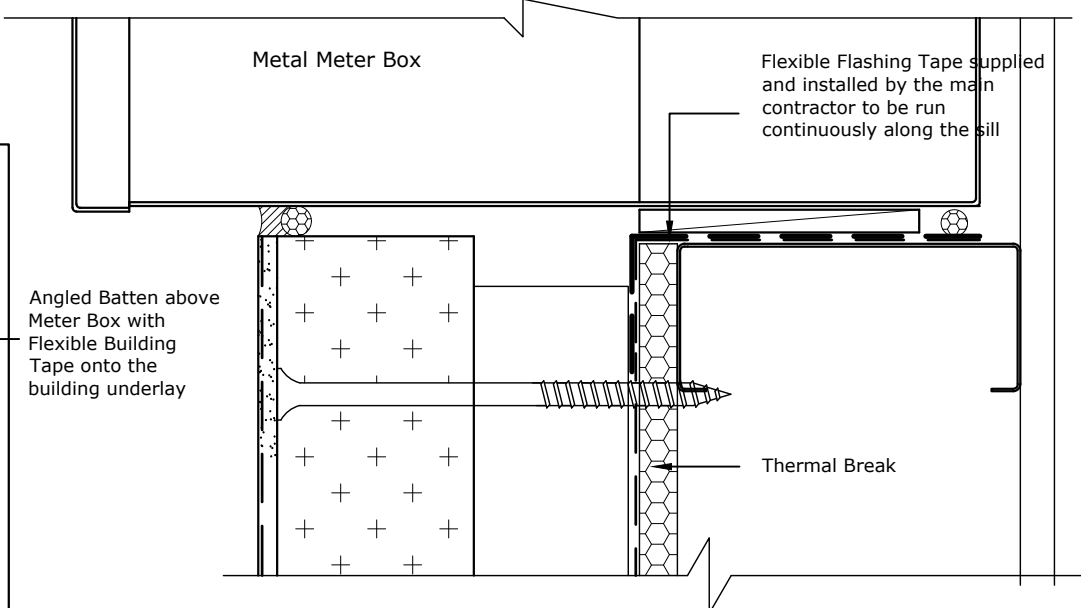
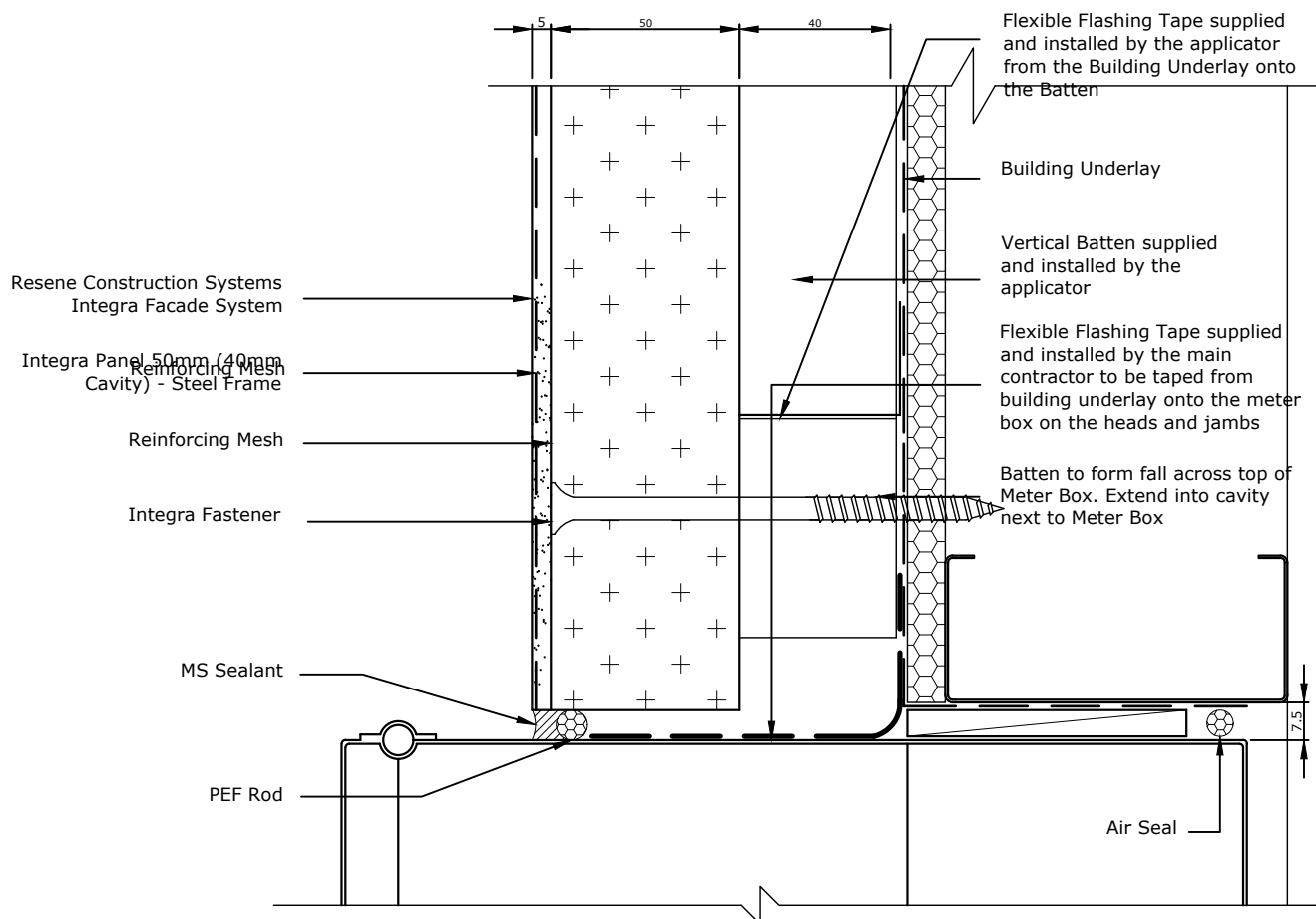
Substrate
 Integra Panel 50mm (40mm Cavity) - Steel Frame

Drawing Name
 Horizontal Control Joint

Scale
 1 : 2 @ A4

Date
 1 November 2017

Sheet
 17.11.00



The responsibility for the penetration is the responsibility of the main contractor, where possible and practical use a flange.

TradeSpec™ and RenderSpec™ are Registered Trademarks, both Documents are available on the Resene Construction Systems

Resene 
Construction Systems

CONFIDENTIALITY: No part of this publication may be reproduced or transmitted other than the intended use by Resene Construction Systems without written consent from the author.

System
Integra Facade System

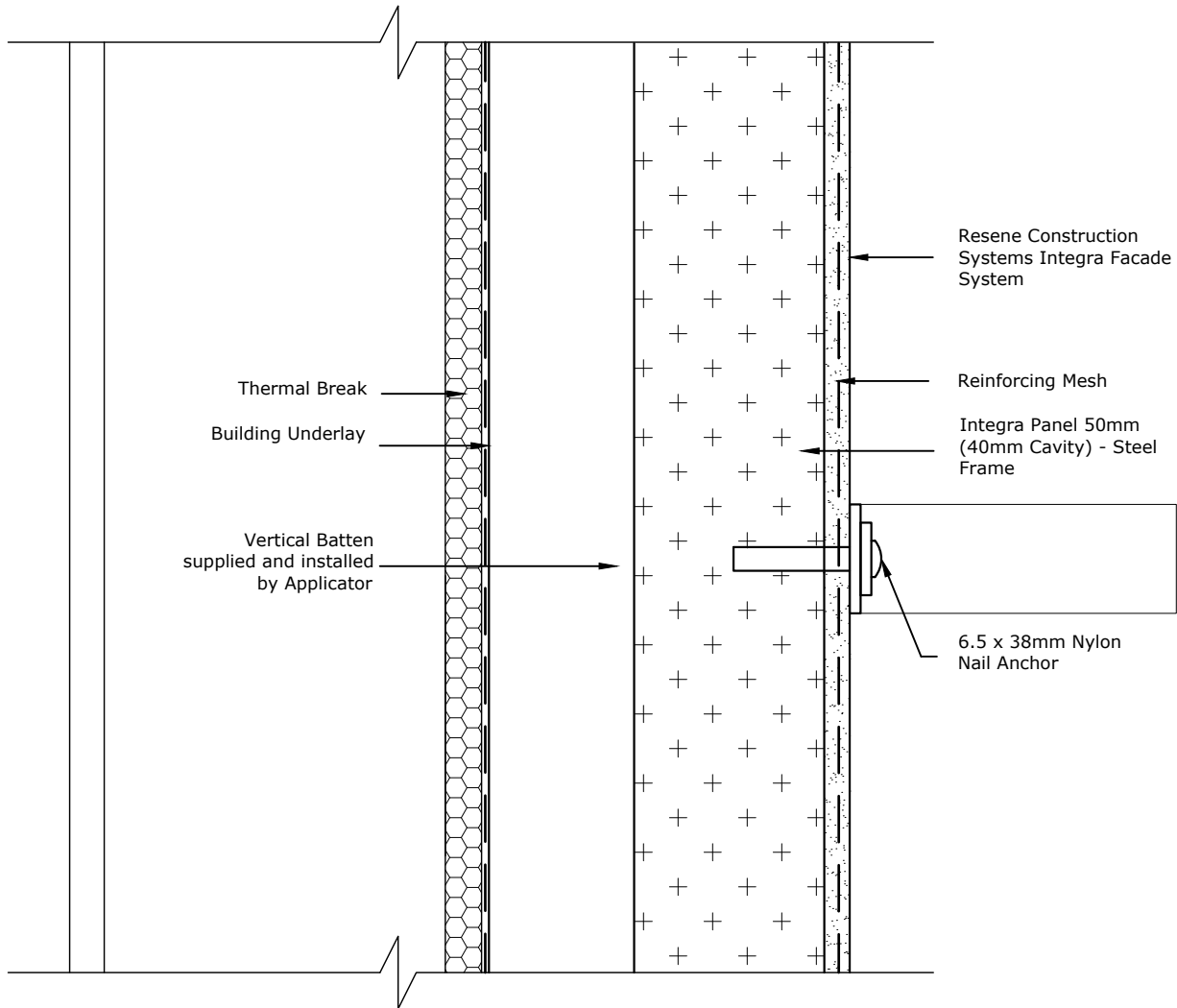
Substrate
Integra Panel 50mm (40mm Cavity) - Steel Frame

Drawing Name
Meter Box Penetration

Scale
1 : 2 @ A4

Date
1 November 2017

Sheet
17.12.00



TradeSpec™ and RenderSpec™ are Registered Trademarks, both Documents are available on the Resene Construction Systems



CONFIDENTIALITY: No part of this publication may be reproduced or transmitted other than the intended use by Resene Construction Systems without written consent from the author.

System
Integra Facade System

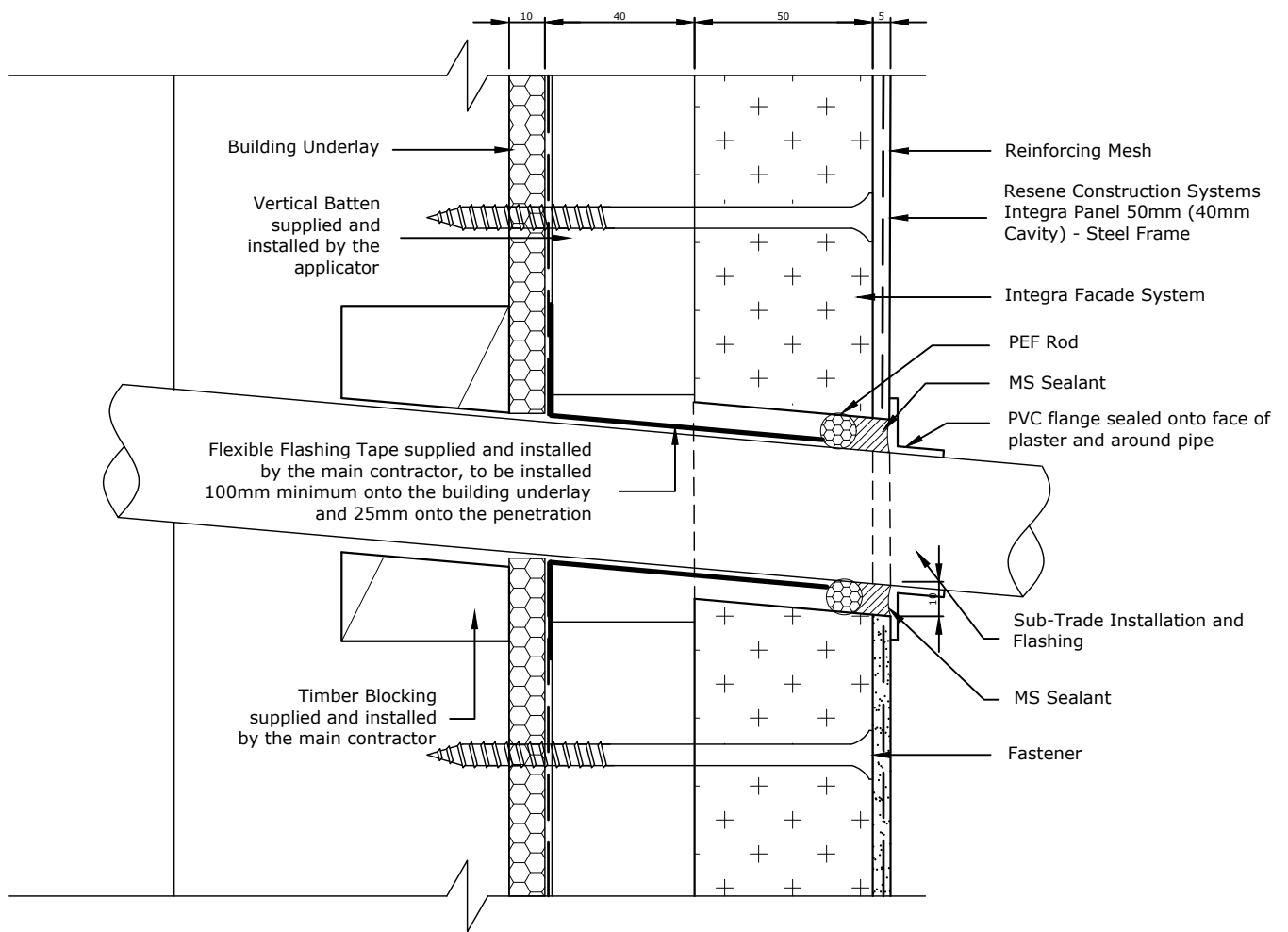
Substrate
Integra Panel 50mm (40mm Cavity) -
Steel Frame

Drawing Name
Lightweight Fixing

Scale
1 : 2 @ A4

Date
29 July 2024

Sheet
17.12.10



The responsibility for the penetration is the responsibility of the main contractor, where possible and practical use a flange.

It is important that there is adequate support for the penetration in the form of timber packing. The penetration should be angled slightly away from the cladding so any moisture is diverted away from the cladding.

TradeSpec™ and RenderSpec™ are Registered Trademarks, both Documents are available on the Resene Construction Systems

Resene 
Construction Systems

CONFIDENTIALITY: No part of this publication may be reproduced or transmitted other than the intended use by Resene Construction Systems without written consent from the author.

System
 Integra Facade System

Scale
 1 : 2 @ A4

Substrate
 Integra Panel 50mm (40mm Cavity)
 - Steel Frame

Date
 1 November 2017

Drawing Name
 Pipe Penetration

Sheet
 17.12.20