

TradeSpec™ and RenderSpec™ are Registered Trademarks, both Documents are available on the Resene Construction Systems website

Resene 
Construction Systems

CONFIDENTIALITY: No part of this publication may be reproduced or transmitted other than the intended use by Resene Construction Systems without written consent from the author.

System
 Insulated Foundation System

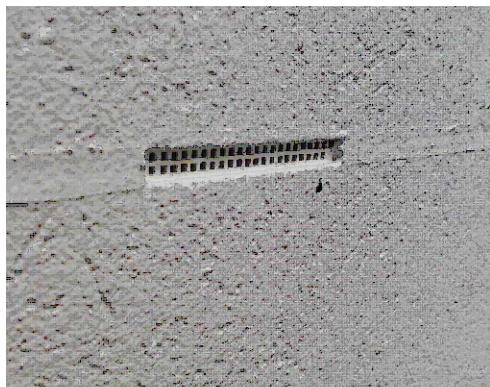
Substrate
 EPS Panel 70mm - Foundation

Drawing Name
 Post-Pour - 90mm Timber Frame-Standard Facade-Option 1

Scale
 1 : 2 @ A4

Date
 6 June 2023

Sheet
 136.02.00



TradeSpec™ and RenderSpec™ are Registered Trademarks, both Documents are available on the Resene Construction Systems

Resene 
Construction Systems

CONFIDENTIALITY: No part of this publication may be reproduced or transmitted other than the intended use by Resene Construction Systems without written consent from the author.

System
Insulated Foundation System

Substrate
EPS Panel 70mm - Foundation

Drawing Name

Post-Pour - 90mm Timber Frame-Standard Facade-Option 2

Scale
1 : 2 @ A4

Date
6 June 2023

Sheet
136.02.01

Air Seal

Slab edge to be sealed using a water proof membrane by Main Contractor prior to installation of joinery (a sill tape can be used). If plastering is to continue over the foundation wall then EIFS tape should be applied over the sill membrane, so this area can be plastered.

Cladding line beyond

RCS Hydroplast prior to texturing

EPS

Resene Construction Systems Insulated Foundation System

RCS Hydroplast



Refer RCS TradeSpec™ Document 1.2 for information on Ground Clearances

TradeSpec™ and RenderSpec™ are Registered Trademarks, both Documents are available on the Resene Construction Systems

Resene
Construction Systems

CONFIDENTIALITY: No part of this publication may be reproduced or transmitted other than the intended use by Resene Construction Systems without written consent from the author.

System
Insulated Foundation System

Substrate
EPS Panel 70mm - Foundation

Drawing Name
Door Sill

Scale
1 : 2 @ A4

Date
6 June 2023

Sheet
136.05.00