

Sheet List Table	
Sheet Number	Sheet Title
35.00.00	Drawing Register - Firewall 15 mins
35.18.00	Foundation - Firewall 15 mins
35.18.01	Fascia - Firewall 15 mins
35.18.02	External Corner - Firewall 15 mins
35.18.05	Vertical Control Joint (Fire Break) 30 mins
35.18.06	Vertical Control Joint (T-Intersection W Conc Block)
35.18.07	Internal Corner (T-Section W Conc Block)
35.18.50	2 Way Firewall Cross Section -15 FRR
35.18.90	15 Minute Firewall Information

TradeSpec™ and RenderSpec™ are Registered Trademarks, both Documents are available on the Resene Construction Systems



CONFIDENTIALITY: No part of this publication may be reproduced or transmitted other than the intended use by Resene Construction Systems without written consent from the author.

System
Integra Construction Systems

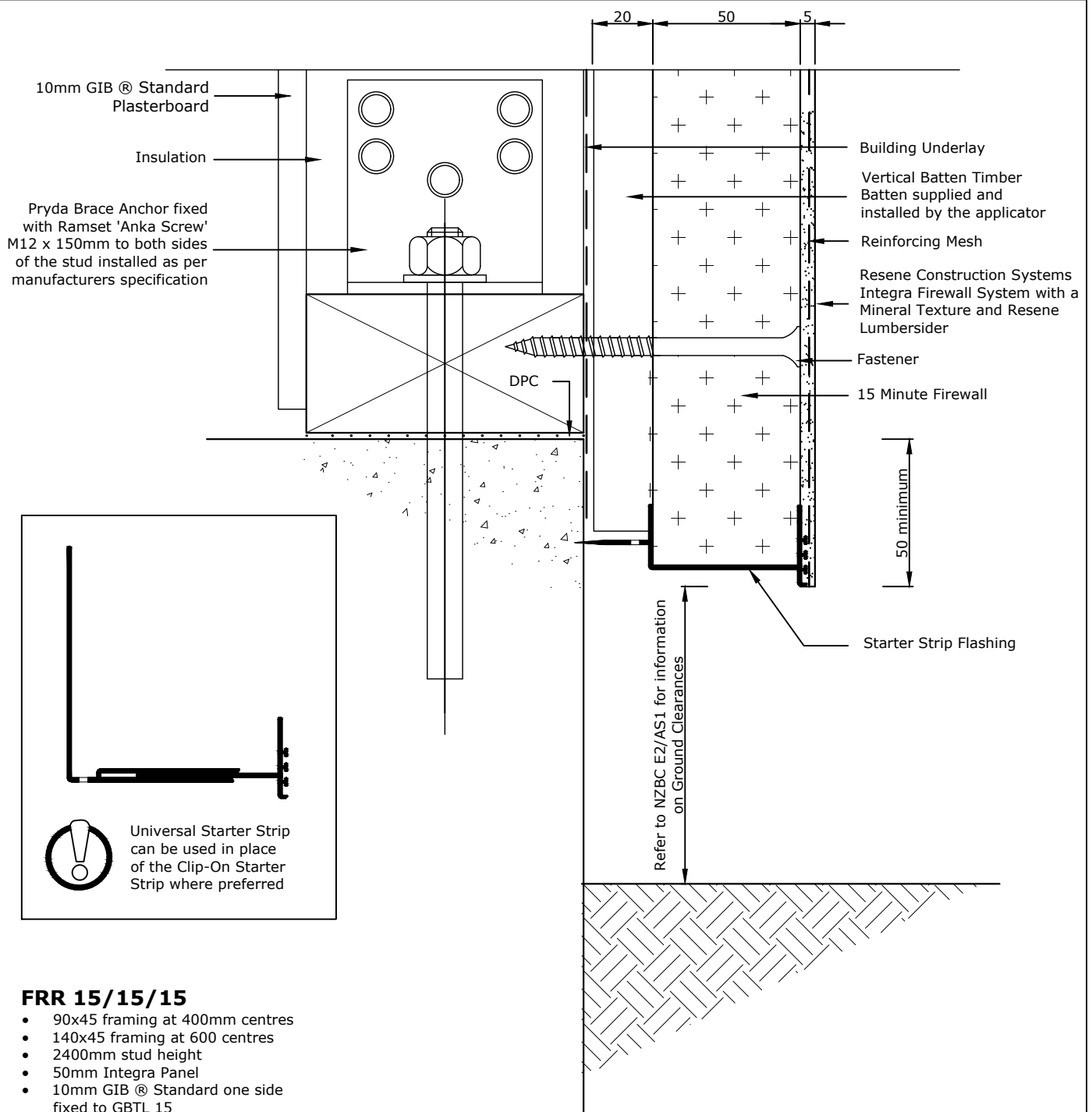
Substrate
15 Minute Firewall

Drawing Name
Drawing Register - Firewall 15 mins

Scale
1 : 2 @ A4

Date
1 November 2017

Sheet
35.00.00



FRR 15/15/15

- 90x45 framing at 400mm centres
- 140x45 framing at 600 centres
- 2400mm stud height
- 50mm Integra Panel
- 10mm GIB® Standard one side fixed to GBTL 15
- Timber framing as per section 6.3
- Full Render System with Mineral Texture and Resene Lumbersider



The external walls are required to be fire rated depending upon the situation when the wall is close to a boundary or a neighbouring property in order to comply with NZBC clause C3. The walls included in this section are load bearing walls as per NZS 3604. Special attention must be paid to junctions and penetrations in external walls. The external claddings may be required to be fixed over a cavity and the cavity must not open into the roof space or sub floor space.

For buildings within the scope of NZS 3604 the bottom plates for all fire rated walls must be supported and fixed to floors using a Pryda Brace Anchor fixed with Ramset 'Anka Screw' M12 x 150mm or proprietary fasteners as per Section 7.5.12. of NZS 3604. For the Specific Engineering Design projects (SED), it is the structural engineer/designer's responsibility to ensure that the floor and wall connections are designed/ constructed to withstand the emergency loading requirements expected as per Clause B1 of NZBC.

TradeSpec™ and RenderSpec™ are Registered Trademarks, both Documents are available on the Resene Construction Systems

Resene 
Construction Systems

CONFIDENTIALITY: No part of this publication may be reproduced or transmitted other than the intended use by Resene Construction Systems without written consent from the author.

System
 Integra Construction Systems

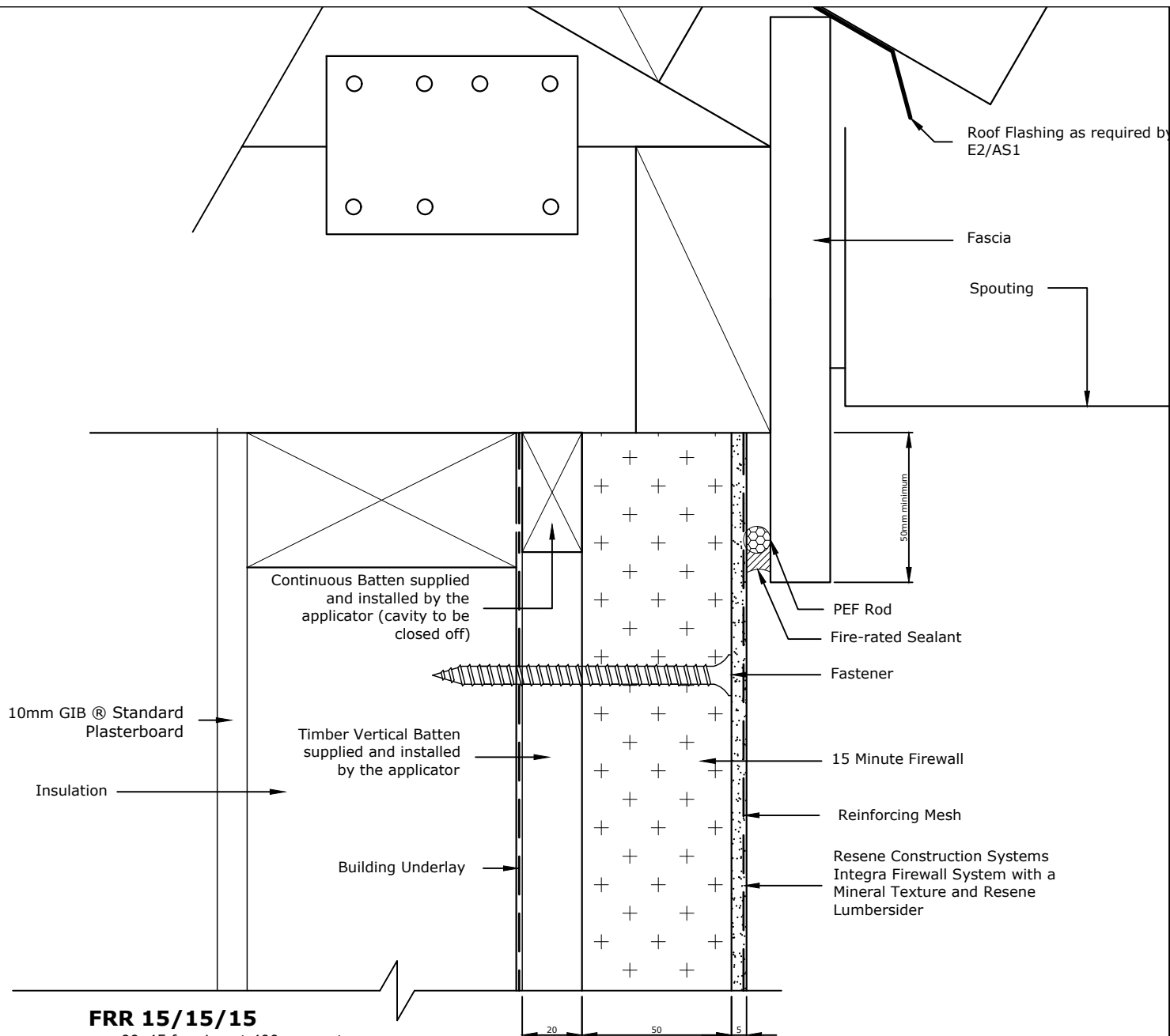
Substrate
 15 Minute Firewall

Drawing Name
 Foundation - Firewall 15 mins

Scale
 1 : 2 @ A4

Date
 1 November 2017

Sheet
 35.18.00



FRR 15/15/15

- 90x45 framing at 400mm centres
- 140x45 framing at 600 centres
- 2400mm stud height
- 50mm Integra Panel
- 10mm GIB® Standard one side fixed to GBTL 15
- Timber framing as per section 6.3
- Full Render System with Mineral Texture and Resene Lumbersider



The external walls are required to be fire rated depending upon the situation when the wall is close to a boundary or a neighbouring property in order to comply with NZBC clause C3. The walls included in this section are load bearing walls as per NZS 3604. Special attention must be paid to junctions and penetrations in external walls. The external claddings may be required to be fixed over a cavity and the cavity must not open into the roof space or sub floor space.

For buildings within the scope of NZS 3604 the bottom plates for all fire rated walls must be supported and fixed to floors using a Pryda Brace Anchor fixed with Ramset 'Anka Screw' M12 x 150mm or proprietary fasteners as per Section 7.5.12. of NZS 3604. For the Specific Engineering Design projects (SED), it is the structural engineer/designer's responsibility to ensure that the floor and wall connections are designed/ constructed to withstand the emergency loading requirements expected as per Clause B1 of NZBC.

TradeSpec™ and RenderSpec™ are Registered Trademarks, both Documents are available on the Resene Construction Systems

Resene 
Construction Systems

CONFIDENTIALITY: No part of this publication may be reproduced or transmitted other than the intended use by Resene Construction Systems without written consent from the author.

System
 Integra Construction Systems

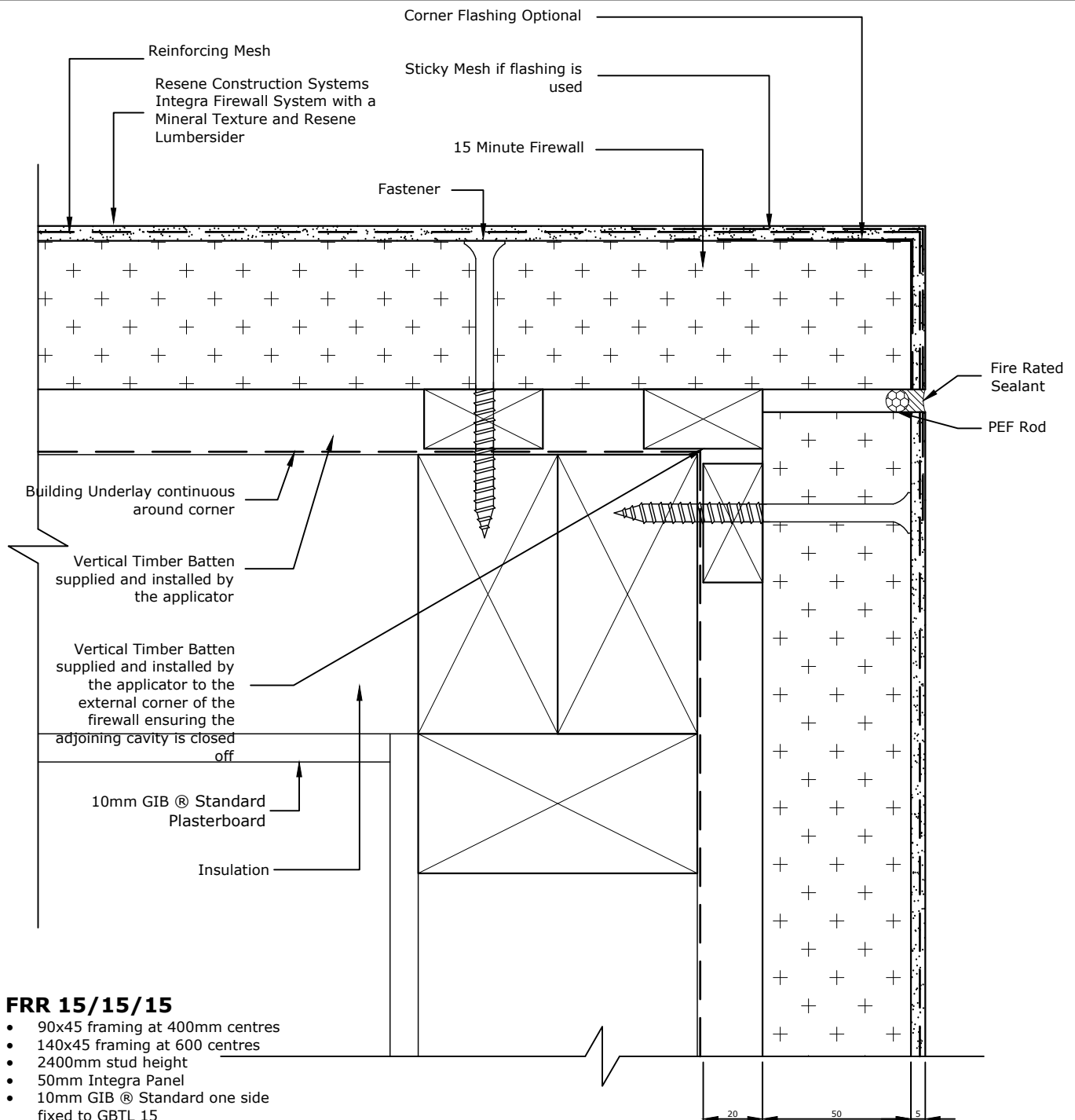
Substrate
 15 Minute Firewall

Drawing Name
 Fascia - Firewall 15 mins

Scale
 1 : 2 @ A4

Date
 2 June 2019

Sheet
 35.18.01



The external walls are required to be fire rated depending upon the situation when the wall is close to a boundary or a neighbouring property in order to comply with NZBC clause C3. The walls included in this section are load bearing walls as per NZS 3604. Special attention must be paid to junctions and penetrations in external walls. The external claddings may be required to be fixed over a cavity and the cavity must not open into the roof space or sub floor space.

For buildings within the scope of NZS 3604 the bottom plates for all fire rated walls must be supported and fixed to floors using a Pryda Brace Anchor fixed with Ramset 'Anka Screw' M12 x 150mm or proprietary fasteners as per Section 7.5.12. of NZS 3604. For the Specific Engineering Design projects (SED), it is the structural engineer/designer's responsibility to ensure that the floor and wall connections are designed/ constructed to withstand the emergency loading requirements expected as per Clause B1 of NZBC.

TradeSpec™ and RenderSpec™ are Registered Trademarks, both Documents are available on the Resene Construction Systems

Resene 
Construction Systems

CONFIDENTIALITY: No part of this publication may be reproduced or transmitted other than the intended use by Resene Construction Systems without written consent from the author.

System
Integra Construction Systems

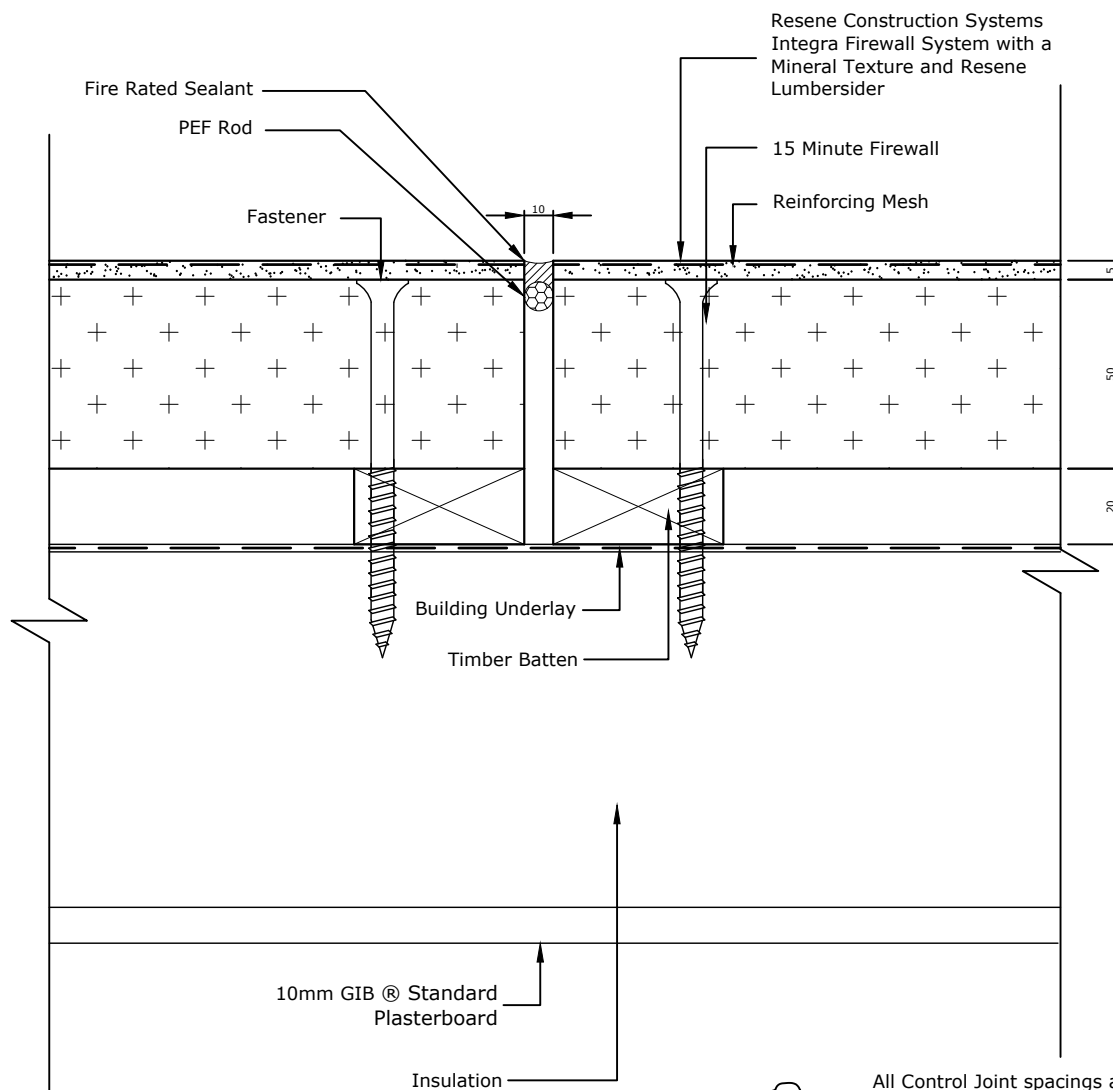
Substrate
15 Minute Firewall

Drawing Name
External Corner - Firewall 15 mins

Scale
1 : 2 @ A4

Date
1 November 2017

Sheet
35.18.02



FRR 15/15/15

- 90x45 framing at 400mm centres
- 140x45 framing at 600 centres
- 2400mm stud height
- 50mm Integra Panel
- 10mm GIB® Standard one side fixed to GBTL 15
- Timber framing as per section 6.3
- Full Render System with Mineral Texture and Resene Lumbersider



All Control Joint spacings and setouts are the responsibility of the Designer, for suggested locations refer to RCS TradeSpec™ Document 1.4

Ensure that a horizontal batten is used to form a horizontal fire break between the vertical fire breaks where the wall meets the soffit/fascia/drainage joint



The external walls are required to be fire rated depending upon the situation when the wall is close to a boundary or a neighbouring property in order to comply with NZBC clause C3. The walls included in this section are load bearing walls as per NZS 3604. Special attention must be paid to junctions and penetrations in external walls. The external claddings may be required to be fixed over a cavity and the cavity must not open into the roof space or sub floor space.

For buildings within the scope of NZS 3604 the bottom plates for all fire rated walls must be supported and fixed to floors using a Pryda Brace Anchor fixed with Ramset 'Anka Screw' M12 x 150mm or proprietary fasteners as per Section 7.5.12. of NZS 3604. For the Specific Engineering Design projects (SED), it is the structural engineer/designer's responsibility to ensure that the floor and wall connections are designed/ constructed to withstand the emergency loading requirements expected as per Clause B1 of NZBC.

TradeSpec™ and RenderSpec™ are Registered Trademarks, both Documents are available on the Resene Construction Systems

Resene 
Construction Systems

CONFIDENTIALITY: No part of this publication may be reproduced or transmitted other than the intended use by Resene Construction Systems without written consent from the author.

System
Integra Construction Systems

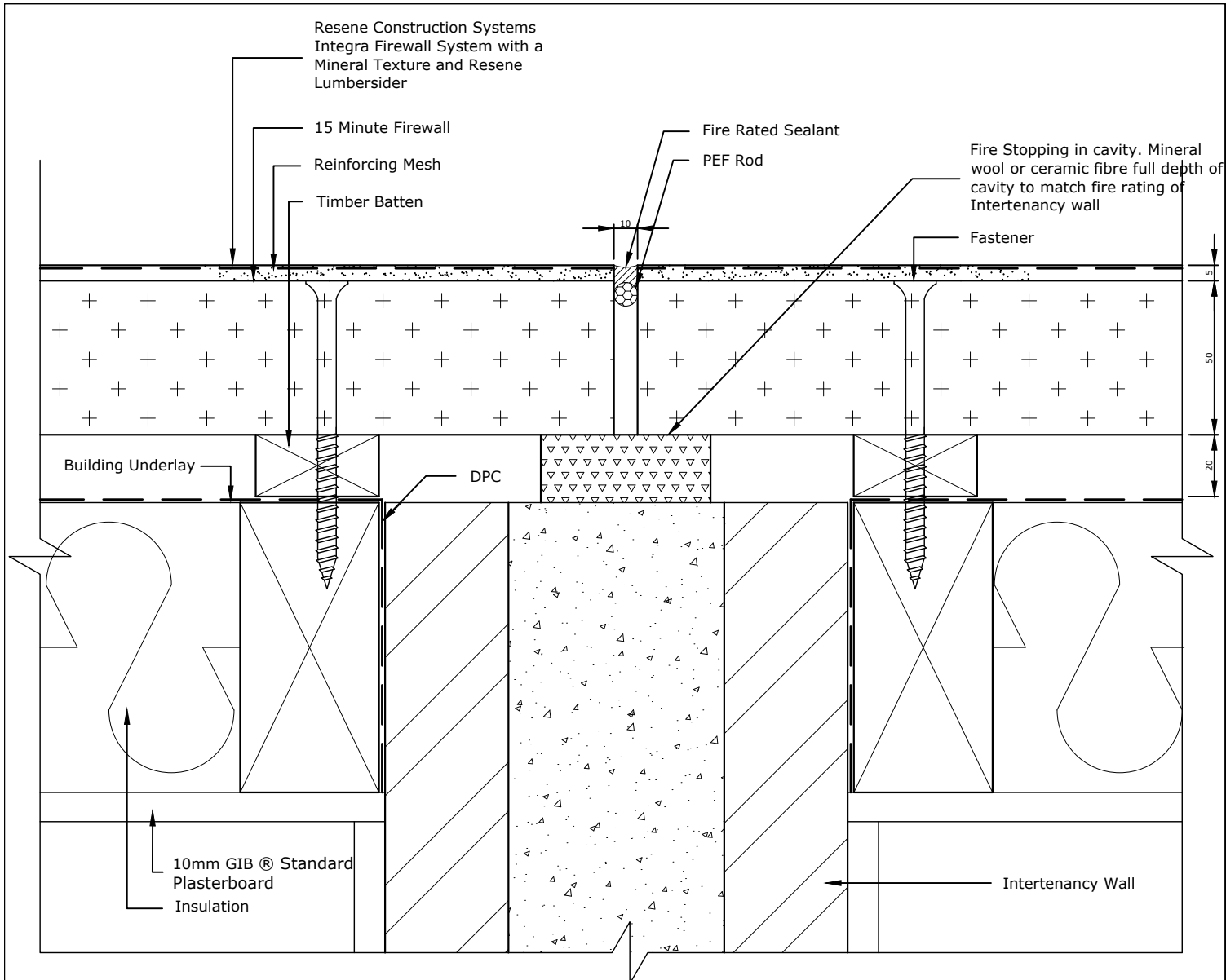
Substrate
15 Minute Firewall

Drawing Name
Vertical Control Joint (Fire Break) 30 mins

Scale
1 : 2 @ A4

Date
1 November 2017

Sheet
35.18.05



FRR 15/15/15

- 90x45 framing at 400mm centres
- 140x45 framing at 600 centres
- 2400mm stud height
- 50mm Integra Panel
- 10mm GIB® Standard one side fixed to GBTL 15
- Timber framing as per section 6.3
- Full Render System with Mineral Texture and Resene Lumbersider



The external walls are required to be fire rated depending upon the situation when the wall is close to a boundary or a neighbouring property in order to comply with NZBC clause C3. The walls included in this section are load bearing walls as per NZS 3604. Special attention must be paid to junctions and penetrations in external walls. The external claddings may be required to be fixed over a cavity and the cavity must not open into the roof space or sub floor space.

For buildings within the scope of NZS 3604 the bottom plates for all fire rated walls must be supported and fixed to floors using a Pryda Brace Anchor fixed with Ramset 'Anka Screw' M12 x 150mm or proprietary fasteners as per Section 7.5.12. of NZS 3604. For the Specific Engineering Design projects (SED), it is the structural engineer/designer's responsibility to ensure that the floor and wall connections are designed/ constructed to withstand the emergency loading requirements expected as per Clause B1 of NZBC.

TradeSpec™ and RenderSpec™ are Registered Trademarks, both Documents are available on the Resene Construction Systems

Resene 
Construction Systems

CONFIDENTIALITY: No part of this publication may be reproduced or transmitted other than the intended use by Resene Construction Systems without written consent from the author.

System
 Integra Construction Systems

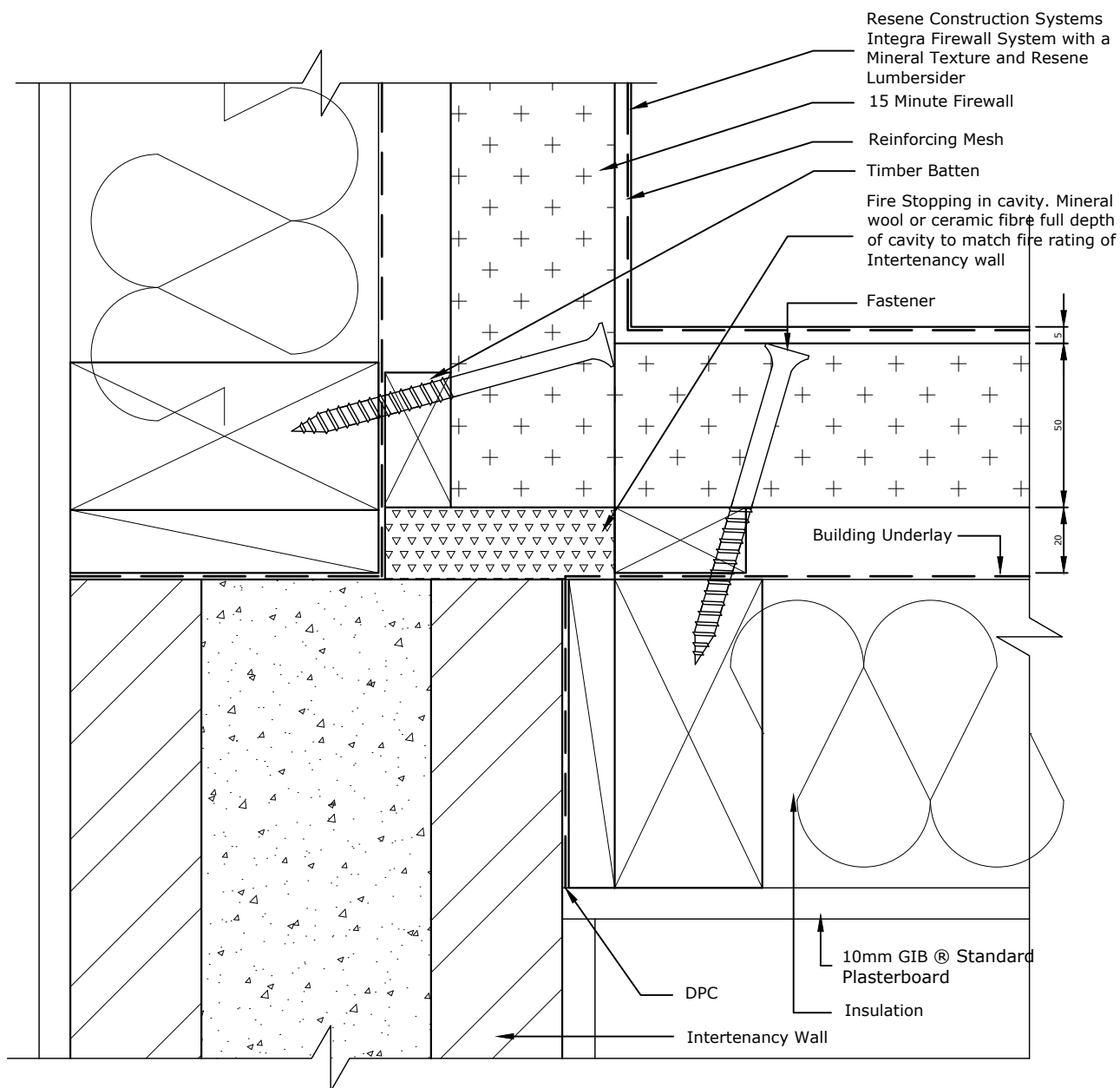
Substrate
 15 Minute Firewall

Drawing Name
 Vertical Control Joint (T-Intersection W Conc Block)

Scale
 1 : 2 @ A4

Date
 1 November 2017

Sheet
 35.18.06



FRR 15/15/15

- 90x45 framing at 400mm centres
- 140x45 framing at 600 centres
- 2400mm stud height
- 50mm Integra Panel
- 10mm GIB ® Standard one side fixed to GBTL 15
- Timber framing as per section 6.3
- Full Render System with Mineral Texture and Resene Lumbersider



The external walls are required to be fire rated depending upon the situation when the wall is close to a boundary or a neighbouring property in order to comply with NZBC clause C3. The walls included in this section are load bearing walls as per NZS 3604. Special attention must be paid to junctions and penetrations in external walls. The external claddings may be required to be fixed over a cavity and the cavity must not open into the roof space or sub floor space.

For buildings within the scope of NZS 3604 the bottom plates for all fire rated walls must be supported and fixed to floors using a Pryda Brace Anchor fixed with Ramset 'Anka Screw' M12 x 150mm or proprietary fasteners as per Section 7.5.12. of NZS 3604. For the Specific Engineering Design projects (SED), it is the structural engineer/designer's responsibility to ensure that the floor and wall connections are designed/ constructed to withstand the emergency loading requirements expected as per Clause B1 of NZBC.

TradeSpec™ and RenderSpec™ are Registered Trademarks, both Documents are available on the Resene Construction Systems

Resene 
Construction Systems

CONFIDENTIALITY: No part of this publication may be reproduced or transmitted other than the intended use by Resene Construction Systems without written consent from the author.

System
 Integra Construction Systems

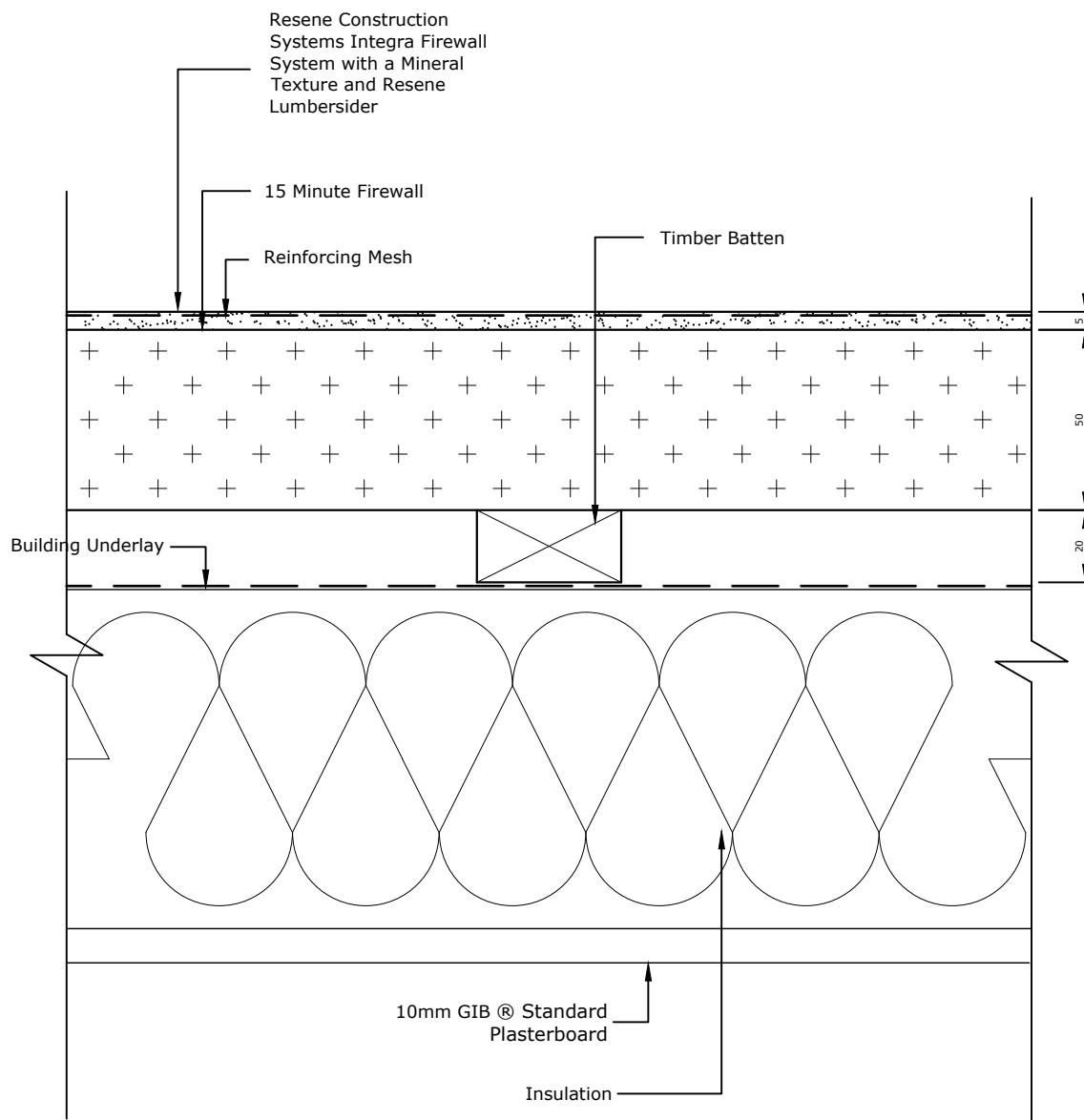
Substrate
 15 Minute Firewall

Drawing Name
 Internal Corner (T-Section W Conc Block)

Scale
 1 : 2 @ A4

Date
 1 November 2017

Sheet
 35.18.07



FRR 15/15/15

- 90x45 framing at 400mm centres
- 140x45 framing at 600 centres
- 2400mm stud height
- 50mm Integra Panel
- 10mm GIB® Standard one side fixed to GBTL 15
- Timber framing as per section 6.3
- Full Render System with Mineral Texture and Resene Lumbersider



The external walls are required to be fire rated depending upon the situation when the wall is close to a boundary or a neighbouring property in order to comply with NZBC clause C3. The walls included in this section are load bearing walls as per NZS 3604. Special attention must be paid to junctions and penetrations in external walls. The external claddings may be required to be fixed over a cavity and the cavity must not open into the roof space or sub floor space.

For buildings within the scope of NZS 3604 the bottom plates for all fire rated walls must be supported and fixed to floors using a Pryda Brace Anchor fixed with Ramset 'Anka Screw' M12 x 150mm or proprietary fasteners as per Section 7.5.12. of NZS 3604. For the Specific Engineering Design projects (SED), it is the structural engineer/designer's responsibility to ensure that the floor and wall connections are designed/ constructed to withstand the emergency loading requirements expected as per Clause B1 of NZBC.

TradeSpec™ and RenderSpec™ are Registered Trademarks, both Documents are available on the Resene Construction Systems

Resene 
Construction Systems

CONFIDENTIALITY: No part of this publication may be reproduced or transmitted other than the intended use by Resene Construction Systems without written consent from the author.

System
 Integra Construction Systems

Substrate
 15 Minute Firewall

Drawing Name
 2 Way Firewall Cross Section -15 FRR

Scale
 1 : 2 @ A4

Date
 1 November 2017

Sheet
 35.18.50

TradeSpec™ and RenderSpec™ are Registered Trademarks, both Documents are available on the Resene Construction Systems



CONFIDENTIALITY: No part of this publication may be reproduced or transmitted other than the intended use by Resene Construction Systems without written consent from the author.

System
Integra Construction Systems

Substrate
15 Minute Firewall

Drawing Name
15 Minute Firewall Information

Scale
NTS @ A4

Date
13 February 2024

Sheet
35.18.90